

# Regulatory Signs MUTCD Compliant

DECORATIVE SIGNAGE



**Stop Sign, R1-1  
w/ Black Back**

Size    Reflectivity    Coating  
SF-6000 -  -  - PNC  
24=24"    DG3=Diamond Grade  
30=30"    EG=Engineering Grade



**Yield Sign, R1-2  
w/ Black Back**

Size    Reflectivity    Coating  
SF-2025 -  -  - PNC  
30=30"    DG3=Diamond Grade  
36=36"    EG=Engineering Grade



**No Outlet Sign, W14-2  
w/ Black Back**

Size    Reflectivity    Coating  
SF-2033 -  -  - PNC  
36=36"    DG3=Diamond Grade  
EG=Engineering Grade



**Dead End, W14-1  
w/ Black Back**

Size    Reflectivity    Coating  
SF-2026 -  -  - PNC  
24=24"    DG3=Diamond Grade  
30=30"    EG=Engineering Grade



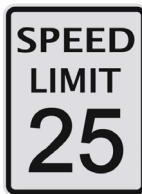
**Curve Right Sign, W1-2R  
w/ Black Back**

Size    Reflectivity    Coating  
SF-2029 -  -  - PNC  
24=24"    DG3=Diamond Grade  
EG=Engineering Grade



**Curve Left Sign, W1-2L  
w/ Black Back**

Size    Reflectivity    Coating  
SF-2030 -  -  - PNC  
24=24"    DG3=Diamond Grade  
EG=Engineering Grade



**Speed Limit Sign, R1-1  
18" x 24" w/ Black Back**

Speed Limit    Reflectivity    Coating  
SF-2015 -  -  - PNC  
20=20MPH    DG3=Diamond Grade  
25=25MPH    EG=Engineering Grade



**Slow, Children at Play Sign, W9-12  
18" x 24" w/ Black Back**

Reflectivity    Coating  
SF-2022 -  - PNC  
DG3=Diamond Grade  
EG=Engineering Grade

Note: 1. Reflective vinyl complies with ASTM D4956.  
2. Contact Pelco for additional MUTCD compliant signs.



# Regulatory Signs MUTCD Compliant



**1-Way Sign, R6-1**  
**36" x 12" w/ Black Back**

Arrow Reflectivity Coating

SF-2016 -  -  - PNC

L=Left DG3=Diamond Grade  
R=Right EG=Engineering Grade



**3-Way Sign, R1-3a**  
**12" x 6" w/ Black Back**

Reflectivity Coating

SF-2027 -  - PNC

DG3=Diamond Grade  
EG=Engineering Grade



**4-Way Sign, R1-3**  
**12" x 6" w/ Black Back**

Reflectivity Coating

SF-2023 -  - PNC

DG3=Diamond Grade  
EG=Engineering Grade



**Parking Sign, R7-8**  
**12" x 18" w/ Black Back**

Reflectivity Coating

SF-2031 -  - PNC

DG3=Diamond Grade  
EG=Engineering Grade

DECORATIVE SIGNAGE

pelco  
PELCO PRODUCTS, INC.

Note: 1. Reflective vinyl complies with ASTM D4956.  
2. Contact Pelco for additional MUTCD compliant signs.



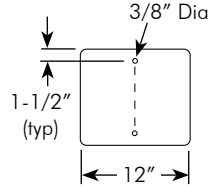
# Custom Signs

Pelco can manufacture custom signs in sizes shown below. Includes white engineering grade reflective legend on a powder coated background color of your choice.



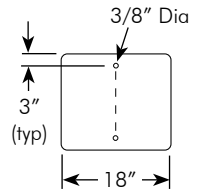
## Sign, 12" Wide x Height w/ 2 Mounting Holes Powder Coat Background, White Reflective Legend

SF-5031 -  -   
 Height      Coating  
 09=9"      P\_\_=Paint  
 12=12"  
 18=18"



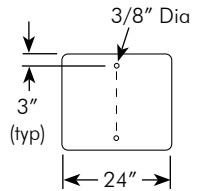
## Sign, 18" Wide x Height w/ 2 Mounting Holes Powder Coat Background, White Reflective Legend

SF-5016 -  -  -   
 Height      Additional Vinyl      Coating  
 12=12"      Blank=None      P\_\_=Paint  
 18=18"      RD=Red  
 24=24"  
 30=30"



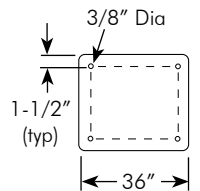
## Sign, 24" Wide x Height w/ 2 Mounting Holes Powder Coat Background, White Reflective Legend

SF-5027 -  -   
 Height      Coating  
 18=18"      P\_\_=Paint  
 24=24"  
 30=30"  
 36=36"



## Sign, 36" Wide x Height w/ 4 Mounting Holes Powder Coat Background, White Reflective Legend

SF-5028 -  -   
 Height      Coating  
 18=18"      P\_\_=Paint  
 24=24"  
 30=30"  
 36=36"



- Note: 1. Reflective vinyl complies with ASTM D4956.  
 2. See Reference Section page v for available paint colors.  
 3. Specify sign legend when ordering.



# Street Name Signs - Post Top

Pelco's Street Name Signs are available in several sizes and shapes, and either a post top or rigid cantilever mount. Choose powder coated with engineering grade reflective vinyl or high intensity diamond grade reflective signs.

## 6" Street Name Sign, Post Top Mount Extruded Blade Powder Coat Background, White Reflective Legend



SF-5011 - 

Length	Coating
24=24"	P__=Paint
30=30"	
36=36"	
42=42"	
48=48"	



SF-5020 - 

Length	Coating
24=24"	P__=Paint
30=30"	
36=36"	
42=42"	
48=48"	



SF-5071 - 

Length	Coating
24=24"	P__=Paint
30=30"	
36=36"	
42=42"	
48=48"	

## 6" Street Name Sign, Post Top Mount Extruded Blade Reflective Background, White Reflective Legend



SF-5000 - 

Length	Reflectivity	Coating
24=24"	DG3GR=Diamond Grade Green	- PNC
30=30"	DG3BL =Diamond Grade Blue	
36=36"		
42=42"		
48=48"		



SF-5034 - 

Length	Reflectivity	Coating
24=24"	DG3GR=Diamond Grade Green	- PNC
30=30"	DG3BL =Diamond Grade Blue	
36=36"		
42=42"		
48=48"		



SF-5081 - 

Length	Reflectivity	Coating
24=24"	DG3GR=Diamond Grade Green	- PNC
30=30"	DG3BL =Diamond Grade Blue	
36=36"		
42=42"		
48=48"		

- Note: 1. Reflective vinyl complies with ASTM D4956.  
 2. See Reference Section page v for available paint colors.  
 3. Specify sign legend when ordering.



## Street Name Signs - Post Top

Pelco's Street Name Signs are available in several sizes and shapes, and either a post top or rigid cantilever mount. Choose powder coated with engineering grade reflective vinyl or high intensity diamond grade reflective signs.

### 9" Street Name Sign, Post Top Mount Extruded Blade Powder Coat Background, White Reflective Legend



SF-5048 - 

Length
24=24"
30=30"
36=36"
42=42"
48=48"

 - 

Coating
P__=Paint



SF-5074 - 

Length
24=24"
30=30"
36=36"
42=42"
48=48"

 - 

Coating
P__=Paint

### 9" Street Name Sign, Post Top Mount Extruded Blade Reflective Background, White Reflective Legend



SF-5047 - 

Length
24=24"
30=30"
36=36"
42=42"
48=48"

 - 

Reflectivity
DG3GR=Diamond Grade Green
DG3BR =Diamond Grade Brown
DG3BL =Diamond Grade Blue

 - 

Coating
- PNC

- Note: 1. Reflective vinyl complies with ASTM D4956.  
 2. See Reference Section page v for available paint colors.  
 3. Specify sign legend when ordering.



# Street Name Signs - Rigid Cantilever

Pelco's Street Name Signs are available in several sizes and shapes, and either a post top or rigid cantilever mount. Choose powder coated with engineering grade reflective vinyl or high intensity diamond grade reflective signs.

## 6" Street Name Sign, Rigid Cantilever Mount Powder Coat Background, White Reflective Legend



SF-5008 -  Length - Rigid Mount -  Coating  
 24=24" - RM - P\_\_=Paint  
 30=30"  
 36=36"  
 42=42"  
 48=48"



SF-5033 -  Length - Rigid Mount -  Coating  
 24=24" - RM - P\_\_=Paint  
 30=30"  
 36=36"  
 42=42"  
 48=48"

## 6" Street Name Sign, Rigid Cantilever Mount Reflective Background, White Reflective Legend



SF-5007 -  Length -  Reflectivity - Rigid Mount - Coating  
 24=24" - DG3GR=Diamond Grade Green - RM - PNC  
 30=30" - DG3BL =Diamond Grade Blue  
 36=36"  
 42=42"  
 48=48"



SF-5032 -  Length -  Reflectivity - Rigid Mount - Coating  
 24=24" - DG3GR=Diamond Grade Green - RM - PNC  
 30=30" - DG3BL =Diamond Grade Blue  
 36=36"  
 42=42"  
 48=48"

- Note: 1. Reflective vinyl complies with ASTM D4956.  
 2. See Reference Section page v for available paint colors.  
 3. Specify sign legend when ordering.



# Street Name Signs - Rigid Cantilever

Pelco's Street Name Signs are available in several sizes and shapes, and either a post top or rigid cantilever mount. Choose powder coated with engineering grade reflective vinyl or high intensity diamond grade reflective signs.

## 9" Street Name Sign, Rigid Cantilever Mount Powder Coat Background, White Reflective Legend



SF-5046 - 

Length	Rigid Mount	Coating
<input type="text"/>	- RM -	<input type="text"/>
24=24"		P__=Paint
30=30"		
36=36"		
42=42"		
48=48"		



SF-5042 - 

Length	Rigid Mount	Coating
<input type="text"/>	- RM -	<input type="text"/>
24=24"		P__=Paint
30=30"		
36=36"		
42=42"		
48=48"		

## 9" Street Name Sign, Rigid Cantilever Mount Reflective Background, White Reflective Legend



SF-5045 - 

Length	Reflectivity	Rigid Mount	Coating
<input type="text"/>	- <input type="text"/>	- RM -	PNC
24=24"	DG3GR=Diamond Grade Green		
30=30"	DG3BR =Diamond Grade Brown		
36=36"	DG3BL =Diamond Grade Blue		
42=42"			
48=48"			



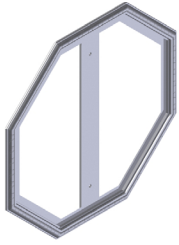
SF-5041 - 

Length	Reflectivity	Rigid Mount	Coating
<input type="text"/>	- <input type="text"/>	- RM -	PNC
24=24"	DG3GR=Diamond Grade Green		
30=30"	DG3BR =Diamond Grade Brown		
36=36"	DG3BL =Diamond Grade Blue		
42=42"			
48=48"			

Note: 1. Reflective vinyl complies with ASTM D4956.  
 2. See Reference Section page v for available paint colors.  
 3. Specify sign legend when ordering.

# Sign Frames

Pelco offers both a decorative and a back plate option for framing your sign, in sizes shown below.



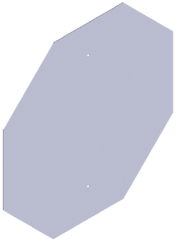
**Sign Frame, Decorative Alum  
24" Octagonal Stop Sign**

AP-7013-1 -   
Coating  
P\_\_=Paint



**Sign Frame, Decorative Alum  
30" Octagonal Stop Sign**

AP-7012-1 -   
Coating  
P\_\_=Paint

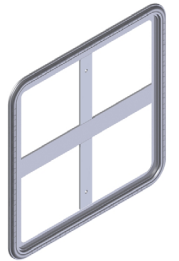


**Back Plate Frame, Alum  
24" Octagonal Stop Sign**

SH-1849 -   
Coating  
P\_\_=Paint

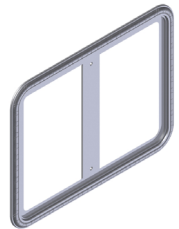
**Back Plate Frame, Alum  
30" Octagonal Stop Sign**

SH-1850 -   
Coating  
P\_\_=Paint



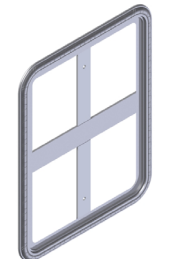
**Sign Frame, Decorative Alum  
24" x 24" Regulatory Sign**

AP-7237 -   
Coating  
P\_\_=Paint



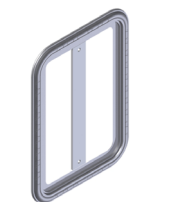
**Sign Frame, Decorative Alum  
24" x 18" Regulatory Sign**

AP-7228 -   
Coating  
P\_\_=Paint



**Sign Frame, Decorative Alum  
18" x 24" Regulatory Sign**

AP-7027 -   
Coating  
P\_\_=Paint



**Sign Frame, Decorative Alum  
12" x 18" Regulatory Sign**

AP-7215 -   
Coating  
P\_\_=Paint



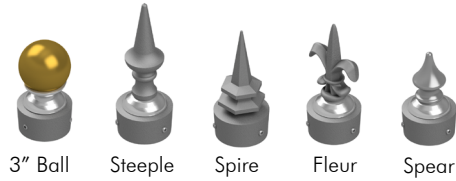
Note: 1. See Reference Section page v for available paint colors.





# Post Tops

Both finial caps and rigid sign mounting caps are available for 2" and 2-1/2" posts.



**Post Cap Assy, Alum  
For 2" (2-3/8" OD) Pole**

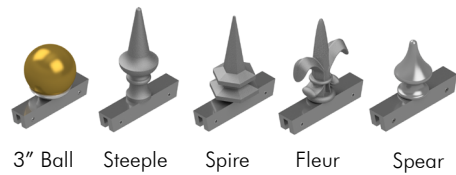
SH-1808 -  -

**Post Cap Assy, Alum  
For 2-1/2" (2-7/8" OD) Pole**

SH-1828 -  -

Note:  
Finial may be ordered as P28 Gold or same color as assembly, i.e., SH-1808-BL28-P33, for Gold Ball finial and Gloss Black assembly.

Finial/Color    Coating  
BL\_\_=3" Ball    P\_\_=Paint  
ST\_\_=Steeple  
SL\_\_=Spire  
FL\_\_=Fleur  
SE\_\_=1-1/2" Spear



**Finial Assy, Alum  
w/ Slot for Extruded Blades**

SH-1813 -  -

Note:  
Finial may be ordered as P28 Gold or same color as assembly, i.e., SH-1813-BL28-P33, for Gold Ball finial and Gloss Black assembly.

Finial/Color    Coating  
BL\_\_=3" Ball    P\_\_=Paint  
ST\_\_=Steeple  
SL\_\_=Spire  
FL\_\_=Fleur  
SE\_\_=1-1/2" Spear



**Post Cap Assy, Alum  
For 2" (2-3/8" OD) Pole**

SH-1609 -

Coating  
P\_\_=Paint



**Post Cap Assy, Alum  
w/ 5" Long Slot for Extruded Blades  
For 2" (2-3/8" OD) Pole**

SH-1800 -

Coating  
P\_\_=Paint

**Post Cap Assy, Alum  
w/ 5" Long Slot for Extruded Blades  
For 2-1/2" (2-7/8" OD) Pole**

SH-1829 -

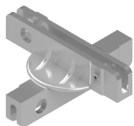
Coating  
P\_\_=Paint



**Post Cap Assy, Alum  
w/ 12" Long Slot for Extruded Blades  
For 2-1/2" (2-7/8" OD) Pole**

SH-1868 -

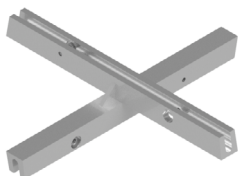
Coating  
P\_\_=Paint



**90 Cross, Alum  
w/ 5" Lg Slots for Extruded Blade**

SH-1801 -

Coating  
P\_\_=Paint



**90 Cross, Alum  
w/ 12" Long Slot for Extruded Blades**

SH-1847 -

Coating  
P\_\_=Paint

Note: 1. See Reference Section page v for available paint colors.

# Sign Clamps

Pelco offers a variety of clamps for mounting signs to the side of a post. U-bolt, sign clamp, mini-brac and ornamental hub are options in various sizes. For additional sign mounting options see section T6.



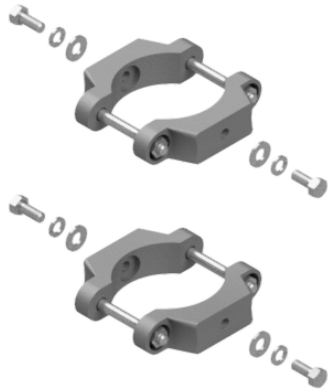
## U-Bolt Sign Clamp Assy, Alum w/ 5/16" Sign Mounting Hardware

	Pole Size	Coating
SH-0206	<input type="text"/>	<input type="text"/>
	1.5=1.5" (1-7/8" OD)	PNC=Process No Color
	2=2" (2-3/8" OD)	P_ =Paint
	2.5=2.5" (2-7.8" OD)	
	4=4.5" (4-1/2" OD)	



## U-Bolt Sign Clamp Assy, Alum w/ 5/16" Sign Mounting Hardware For Ornamental Sign Frames

	Pole Size	Coating
SH-0227	<input type="text"/>	<input type="text"/>
	1.5=1.5" (1-7/8" OD)	PNC=Process No Color
	2=2" (2-3/8" OD)	P_ =Paint
	2.5=2.5" (2-7.8" OD)	
	4=4.5" (4-1/2" OD)	



## Double Sign Clamp Assy, Alum w/ 5/16" Sign Mounting Hardware

	Pole Size	Coating
SH-0203	<input type="text"/>	<input type="text"/>
	1.5=1.5" (1-7/8" OD)	PNC=Process No Color
	2=2" (2-3/8" OD)	P_ =Paint
	2.5=2.5" (2-7.8" OD)	
	4=4.5" (4-1/2" OD)	

DECORATIVE SIGNAGE

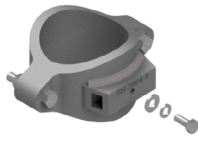


Note: 1. See Reference Section for available paint colors.  
2. See section T6 for additional sign mounting options.

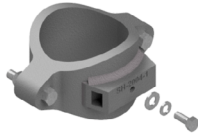


# Sign Clamps

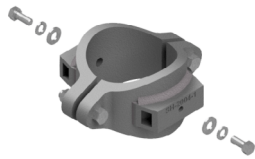
Pelco offers a variety of clamps for mounting signs to the side of a post. U-bolt, sign clamp, mini-brac and ornamental hub are options in various sizes. For additional sign mounting options see section T6.



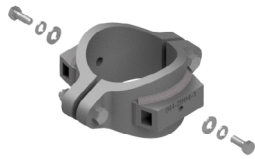
## Sign Clamp Assy, Alum w/ 5/16" Sign Mounting Hardware



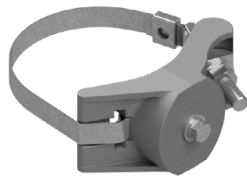
Pole Size      Coating  
 SH-0201 - 3 -   
 3=3" (3-1/2" OD)      PNC=Process No Color  
                                  P\_\_=Paint



## Double Sign Clamp Assy, Alum w/ 5/16" Sign Mounting Hardware



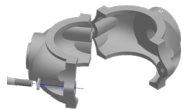
Pole Size      Coating  
 SH-0202 - 3 -   
 3=3" (3-1/2" OD)      PNC=Process No Color  
                                  P\_\_=Paint



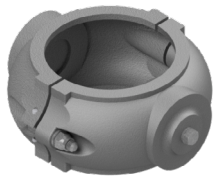
## Sign Mount Assy, Astro Mini-Brac, Alum w/ 5/16" Sign Mounting Hardware

Band Length      Coating  
 SH-0228 -  -   
 29=29" Band      PNC=Process No Color  
 42=42" Band      P\_\_=Paint  
 29PB=29" Painted Band  
 42PB=42" Painted Band

Band Length:	29"	42"
Maximum Pole Dia:	7.3"	11.5"



Hinged Clamp for ease of installation (2 required for mounting sign)



## Sign Mount Assy, Hinged Ornamental Hub, Alum w/ 5/16" Sign Mounting Hardware

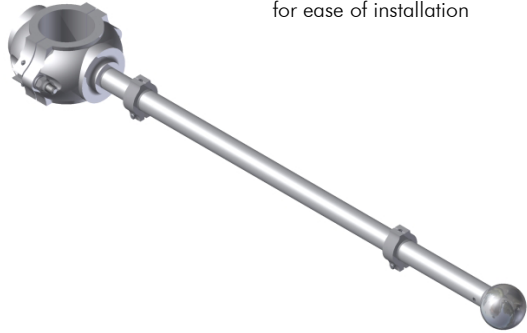
Pole Dia      Coating  
 SH-0215 -  -   
 2.88=2-7/8"      PNC=Process No Color  
 3.50=3-1/2"      P\_\_=Paint  
 4.06=3" Fluted  
 4.50=4-1/2"  
 5.08=4" Fluted  
 5.56=5-9/16"

Note: 1. See Reference Section for available paint colors.  
 2. See Reference Section for band clamp kit pole diameters.



# Cantilever Sign Mounts

Pelco Cantilever Sign Mounts are available with a hinged ornamental hub, banded mini-brac, or universal hub and come in various lengths with decorative finial options.

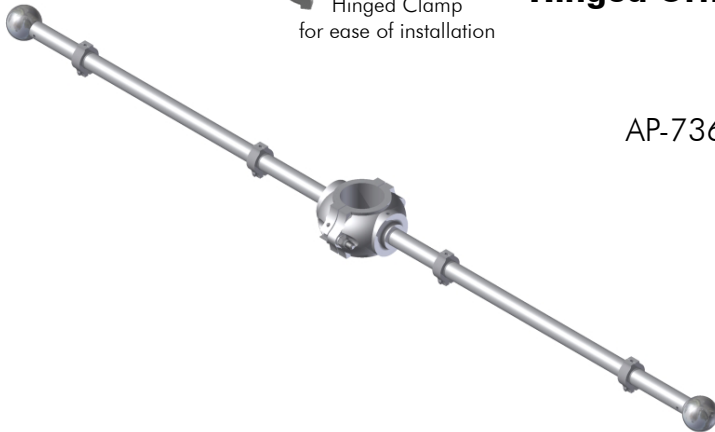


## Street Name Sign Bracket, Alum Hinged Ornamental Hub, Single Arm

AP-7362	Pole Dia	Sign Length	Finial/Color	Coating
	- [ ] -	[ ] -	[ ] -	[ ]
	2.38=2-3/8"	24=24"	BL__=2" Ball	P__=Paint
	2.88=2-7/8"	30=30"	ST__=Steeple	
	3.50=3-1/2"	36=36"	SI__=Spire	
	4.06=3" Fluted	42=42"	FL__=Fleur	
	4.50=4-1/2"	48=48"	SE__=1-1/2" Spear	
	5.08=4" Fluted			
	5.56=5-9/16"			



Note:  
Shown with ball finial. Finial may be ordered as P28 Gold or same color as assembly, i.e., AP-7362-3.50-24-BL28-P33, for Gold Ball finial and Gloss Black assembly.



## Street Name Sign Bracket, Ornamental Hub, Alum Hinged Ornamental Hub, Double Arm

AP-7369	Pole Dia	Sign Length	Sign Length	Finial/Color	Coating
	- [ ] -	[ ] -	[ ] -	[ ] -	[ ]
	2.38=2-3/8"	24=24"	24=24"	BL__=2" Ball	P__=Paint
	2.88=2-7/8"	30=30"	30=30"	ST__=Steeple	
	3.50=3-1/2"	36=36"	36=36"	SI__=Spire	
	4.06=3" Fluted	42=42"	42=42"	FL__=Fleur	
	4.50=4-1/2"	48=48"	48=48"	SE__=1-1/2" Spear	
	5.08=4" Fluted				
	5.56=5-9/16"				



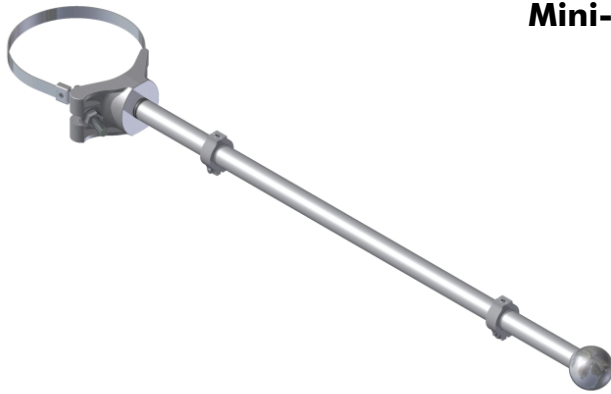
Note:  
Shown with ball finial. Finial may be ordered as P28 Gold or same color as assembly, i.e., AP-7369-3.50-24-24-BL28-P33, for Gold Ball finial and Gloss Black assembly.

Note: 1. See Reference Section page v for available paint colors.



# Cantilever Sign Mounts

Pelco Cantilever Sign Mounts are available with a hinged ornamental hub, banded mini-brac, or universal hub and come in various lengths with decorative finial options.



## Street Name Sign Bracket, Alum Mini-Brac w/ Stainless Steel Bands

Sign Length	BandLength/Painted	Finial/Color	Coating
AP-7268 - <input type="text"/>	- <input type="text"/>	- <input type="text"/>	- <input type="text"/>
24=24"	29=29"	BL__=2" Ball	P__=Paint
30=30"	42=42"	ST__=Steeple	
36=36"	29PB=29" Painted	SL__=Spire	
42=42"	42PB=42" Painted	FL__=Fleur	
48=48"		SE__=1-1/2" Spear	

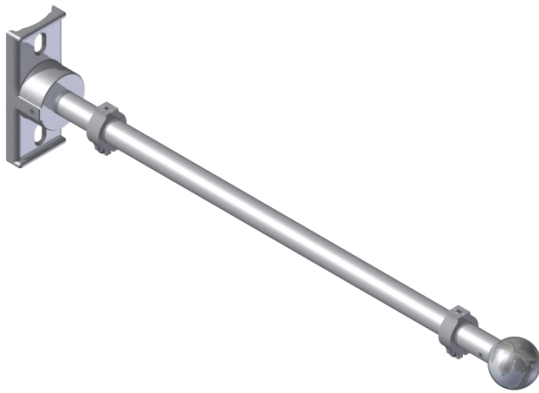
Band Length:	29"	42"
Maximum Pole Dia:	7.3"	11.5"



**Note:**

Shown with ball finial. Finial may be ordered as P28 Gold or same color as assembly, i.e., SH-3551-3.50-24-BL28-P33, for Gold Ball finial and Gloss Black assembly. If painted band is required, band will be painted same color as assembly.

## Street Name Sign Bracket, Alum Universal Hub



Sign Length	Finial/Color	Coating
SH-3510 - <input type="text"/>	- <input type="text"/>	- <input type="text"/>
24=24"	BL__=2" Ball	P__=Paint
30=30"	ST__=Steeple	
36=36"	SL__=Spire	
42=42"	FL__=Fleur	
48=48"	SE__=1-1/2" Spear	



**Note:**

Shown with ball finial. Finial may be ordered as P28 Gold or same color as assembly, i.e., SH-3510-24-BL28-P33, for Gold Ball finial and Gloss Black assembly.

Note: 1. See Reference Section page v for available paint colors.



# Sign Posts

Pelco offers a 2-3/8" and 2-7/8" steel sign post in various length. For additional pole options and details of bases shown below see section T15.



## Sign Post, 2-3/8" OD Steel, Direct Bury

PB -5208-  -

Height                      Coating  
 06=6'                      P\_\_=Paint  
 08=8'  
 10=10'  
 12=12'  
 15=15'

### ABS Bases:



AP-0804-2.38  
Old Towne I



AP-0803-2.38  
Rochester I



AP-0810-2.38  
Hamilton

### Aluminum Bases:



AP-0801-2.38  
Old Towne I



AP-0807-2.38  
Old Towne II

- Note: 1. See Reference Section page v for available paint colors.  
 2. For additional information on Bases see page T15-27 through T15-31.  
 3. For Anchors see sections T11 and T12.



## Sign Posts

Pelco offers a 2-3/8" and 2-7/8" steel sign post in various length. For additional pole options and details of bases shown below see section T15.



### Sign Post, 2-7/8" OD Steel, Direct Bury

AP-2072- 

Height
06=6'
08=8'
10=10'
12=12'
15=15'

 - 

Coating
P__=Paint

#### ABS Bases:



AP-0804-2.88  
Old Towne I



AP-0803-2.88  
Rochester I



AP-0810-2.88  
Hamilton

#### Aluminum Bases:



AP-0801-2.88  
Old Towne I



AP-0807-2.88  
Old Towne II



AP-0820-2.88  
Huntington

Note: 1. See Reference Section for available paint colors.  
2. For additional information on Bases see page T15-27 through T15-31.  
3. For Anchors see sections T11 and T12.

This page is intentionally left blank.

