

Pedestal Poles

Pelco offers aluminum, iron, and plastic bases in various sizes as well as poles in aluminum and steel. Pelco's cast aluminum square base is FHWA certified and meets or exceeds AASHTO break-away requirements. Plastic replacement doors offer an economical way to deter vandalism.



Pedestal Pole, 4" Sch 40, Spun Alum No Threads

PB-5101 - Length - Coating

PNC=Process No Color
P__=Paint

Pedestal Pole, 4"-8 NPT Sch 40, Spun Alum

PB-5100 - Length - Coating

PNC=Process No Color
P__=Paint

Pedestal Pole, 4"-8 NPT Sch 80, Spun Alum

PB-5102 - Length - Coating

PNC=Process No Color
P__=Paint

Pedestal Pole, 4"-8 NPT Sch 40, Steel

PB-5201 - Length - Coating

P__=Paint

Pedestal Pole, 4"-8 NPT Sch 40, Galv Steel

PB-5200 - Length - GLV - Coating

Blank=Galvanized Only
P__=Paint over Galvanized

Pedestal Pole, Welded, 4"-8 NPT w/ 5-1/2" Nipple, Steel

PB-5219 - Length - Coating

GLV=Galvanized
P__=Paint



No
Threads



4"-8NPT
TOE



Welded
4"-8NPT
TOE

Note: 1. Standard poles are typically sold in 1 foot increments from 4' and above.
For other lengths contact sales.
2. See Reference Section page v for available paint colors.



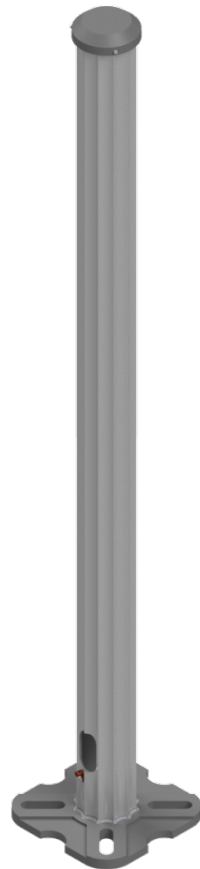
Pedestal Poles

Pelco offers aluminum, iron, and plastic bases in various sizes as well as poles in aluminum and steel. Pelco's cast aluminum square base is FHWA certified and meets or exceeds AASHTO break-away requirements. Plastic replacement doors offer an economical way to deter vandalism.



Pedestal Pole, 4"- 8 NPT Sch 40, Spun Alum Threaded Both Ends

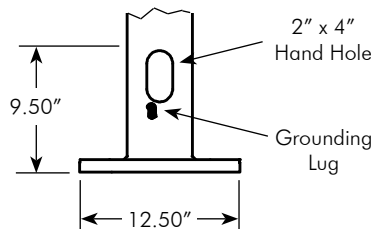
PB-5107 - Length - Coating
 PNC=Process No Color
 P_ =Paint



Pedestal Pole Assy, 4" Fluted, Alum 7.88"-13.00" Bolt Circle for 3/4" Anchor Bolts

PB-5235 - Length - Coating
 10=10'-0"
 12=12'-0"
 13=13'-0"
 PNC=Process No Color
 P_ =Paint

Note:
Includes grounding lug & cap.



Note: 1. Standard poles are typically sold in 1 foot increments from 4' and above.
 For other lengths contact sales.
 2. See Reference Section page v for available paint colors.



Pedestal Poles

Pelco offers aluminum, iron, and plastic bases in various sizes for both low and high load applications, as well as poles in both aluminum and steel. Pelco's PB-5334 and PB-5335 cast aluminum square bases are FHWA certified and meets or exceeds AASHTO break-away requirements. Plastic replacement doors offer an economical way to deter vandalism.



Compact Base Assembly, Alum -5K Capacity w/ Alum Door

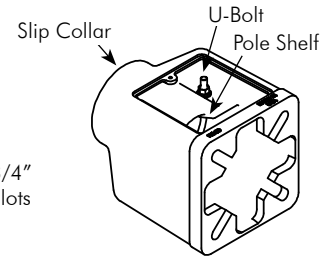
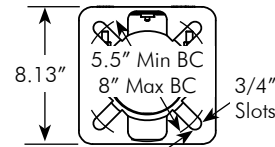
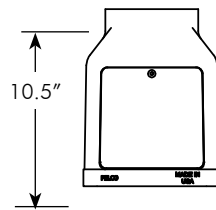
PB-5551 -

Coating

PNC=Process No Color

P_ =Paint

Note: When properly installed the square aluminum pedestal base will withstand a moment of 5,000 ft-lb at the bottom of the base.



Push Button Pole, 4" Pole w/ Square Compact Base, Alum

PB-5237 - - -

Pole

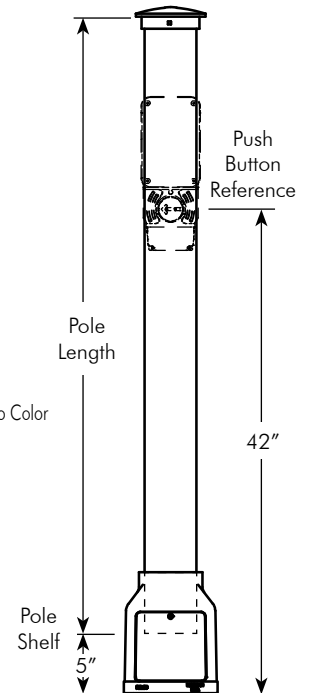
Length

Coating

SCH10=Sch 10
SCH40=Sch 40

5=5'-0"

PNC=Process No Color
P_ =Paint



- Note: 1. Standard poles is 5' foot. Additional lengths must be approved by engineering.
2. See Section T8 for available push buttons.
3. See Reference Section page v for available paint colors.



Square Pedestal Bases Aluminum

Pelco offers aluminum, iron, and plastic bases in various sizes for both low and high load applications, as well as poles in both aluminum and steel. Pelco's PB-5334 and PB-5335 cast aluminum square bases are FHWA certified and meets or exceeds AASHTO break-away requirements. Plastic replacement doors offer an economical way to deter vandalism.



Square Base Assembly, Alum -10K Capacity w/ Alum Door

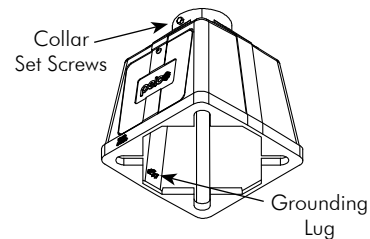
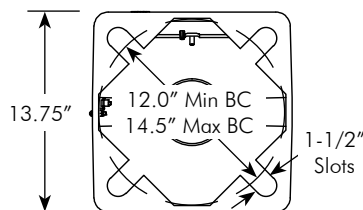
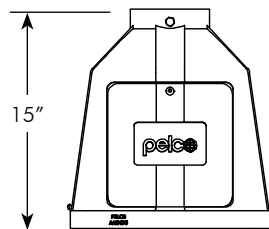


PB-5553	-	Door	-	Set Screws in Collar	-	Grounding Lug	-	Coating
		<input type="checkbox"/>		<input type="checkbox"/>		<input type="checkbox"/>		<input type="checkbox"/>
		NL=No Logo Blank=Pelco Logo		1S=1 Hex Bolt 3S=3 Set Screws Blank=None		GL=Ground Lug Blank=None		PNC=Process No Color P__=Paint

Square Base Assembly, Alum -10K Capacity w/ Plastic Door

PB-5554	-	Door	-	Set Screws in Collar	-	Grounding Lug	-	PNC
		<input type="checkbox"/>		<input type="checkbox"/>		<input type="checkbox"/>		
		NL=No Logo Blank=Pelco Logo		1S=1 Hex Bolt 3S=3 Set Screws Blank=None		GL=Ground Lug Blank=None		

Note: When properly installed the square aluminum pedestal base will withstand a moment of 10,000 ft-lb at the bottom of the base.



Note: 1. All assemblies are supplied standard with stainless fasteners.
2. See Reference Section page v for available paint colors.



Square Pedestal Bases Aluminum

Pelco offers aluminum, iron, and plastic bases in various sizes for both low and high load applications, as well as poles in both aluminum and steel. Pelco's PB-5334 and PB-5335 cast aluminum square bases are FHWA certified and meets or exceeds AASHTO break-away requirements. Plastic replacement doors offer an economical way to deter vandalism.



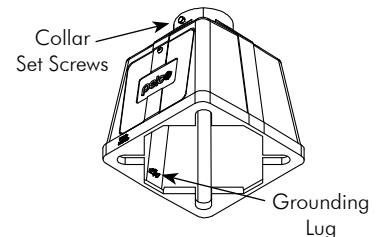
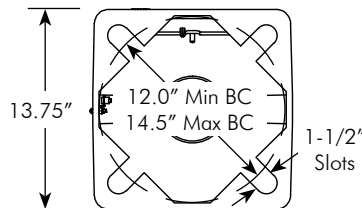
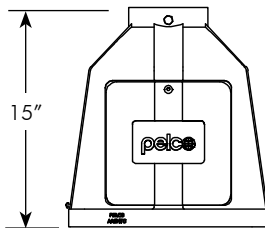
Square Base Assembly, Alum -12K Capacity w/ Alum Door

	Door	-	Set Screws in Collar	-	Grounding Lug	-	Coating	
PB-5334	-	<input type="checkbox"/>	-	<input type="checkbox"/>	-	<input type="checkbox"/>	-	<input type="checkbox"/>
	NL=No Logo Blank=Pelco Logo		1S=1 Hex Bolt 3S=3 Set Screws Blank=None		GL=Ground Lug Blank=None		PNC=Process No Color P__=Paint	

Square Base Assembly, Alum -12K Capacity w/ Plastic Door

	Door	-	Set Screws in Collar	-	Grounding Lug	-	PNC	
PB-5335	-	<input type="checkbox"/>	-	<input type="checkbox"/>	-	<input type="checkbox"/>	-	PNC
	NL=No Logo Blank=Pelco Logo		1S=1 Hex Bolt 3S=3 Set Screws Blank=None		GL=Ground Lug Blank=None			

Note: When properly installed the square aluminum pedestal base will withstand a moment of 12,000 ft-lb at the bottom of the base.



- Note: 1. PB-5334 and PB-5335 aluminum square bases above are available with AASHTO certifications and FHWA approval.
 2. All assemblies are supplied standard with stainless fasteners.
 3. See Reference Section page v for available paint colors.



Square Pedestal Bases Aluminum

Pelco offers aluminum, iron, and plastic bases in various sizes for both low and high load applications, as well as poles in both aluminum and steel. Pelco's PB-5334 and PB-5335 cast aluminum square bases are FHWA certified and meets or exceeds AASHTO break-away requirements. Plastic replacement doors offer an economical way to deter vandalism.



Square Base Assembly, Alum -15K Capacity Heat Treated w/ Alum Door



PB-5336	-	Door	-	Set Screws in Collar	-	Grounding Lug	-	Coating
		<input type="checkbox"/>		<input type="checkbox"/>		<input type="checkbox"/>		<input type="checkbox"/>
		NL=No Logo Blank=Pelco Logo		1S=1 Hex Bolt 3S=3 Set Screws Blank=None		GL=Ground Lug Blank=None		PNC=Process No Color P__=Paint

Square Base Assembly, Alum -15K Capacity Heat Treated w/ Plastic Door

PB-5337	-	Door	-	Set Screws in Collar	-	Grounding Lug	-	PNC
		<input type="checkbox"/>		<input type="checkbox"/>		<input type="checkbox"/>		
		NL=No Logo Blank=Pelco Logo		1S=1 Hex Bolt 3S=3 Set Screws Blank=None		GL=Ground Lug Blank=None		

Note: When properly installed the square aluminum pedestal base will withstand a moment of 15,000 ft-lb at the bottom of the base.

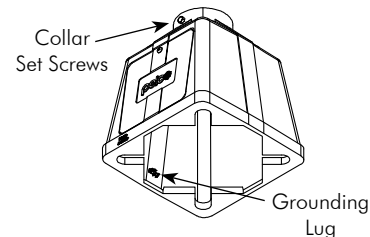
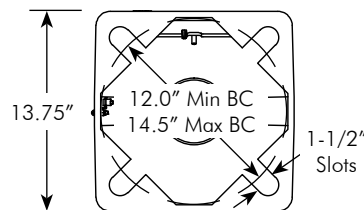
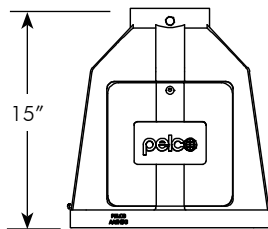
Square Base Assembly, Alum Steel Coupling w/ Alum Door



PB-5340	-	Door	-	Set Screws in Collar	-	Grounding Lug	-	Coating
		<input type="checkbox"/>		<input type="checkbox"/>		<input type="checkbox"/>		<input type="checkbox"/>
		NL=No Logo Blank=Pelco Logo		1S=1 Hex Bolt 3S=3 Set Screws Blank=None		GL=Ground Lug Blank=None		PNC=Process No Color P__=Paint

Square Base Assembly, Alum Steel Coupling w/ Plastic Door

PB-5341	-	Door	-	Set Screws in Collar	-	Grounding Lug	-	PNC
		<input type="checkbox"/>		<input type="checkbox"/>		<input type="checkbox"/>		
		NL=No Logo Blank=Pelco Logo		1S=1 Hex Bolt 3S=3 Set Screws Blank=None		GL=Ground Lug Blank=None		



Note: 1. All assemblies are supplied standard with stainless fasteners.
2. See Reference Section page v for available paint colors.



Square Pedestal Bases Aluminum

Pelco offers aluminum, iron, and plastic bases in various sizes for both low and high load applications, as well as poles in both aluminum and steel. Pelco's PB-5334 and PB-5335 cast aluminum square bases are FHWA certified and meets or exceeds AASHTO break-away requirements. Plastic replacement doors offer an economical way to deter vandalism.



Square Base Assembly, Alum Slip Fit w/ Alum Door

PB-5338 - - -

Door Grounding Lug Coating

NL=No Logo GL=Ground Lug PNC=Process No Color
Blank=Pelco Logo Blank=None P__=Paint

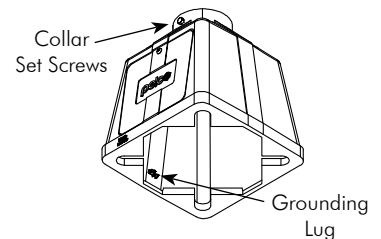
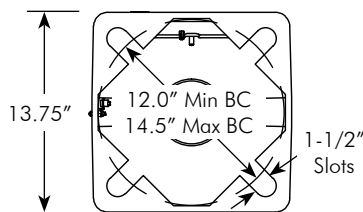
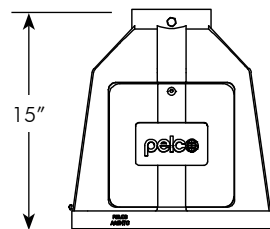
Square Base Assembly, Alum Slip Fit w/ Plastic Door

PB-5339 - - - PNC

Door Grounding Lug

NL=No Logo GL=Ground Lug
Blank=Pelco Logo Blank=None

Note:
Pole must be welded to base in the field.



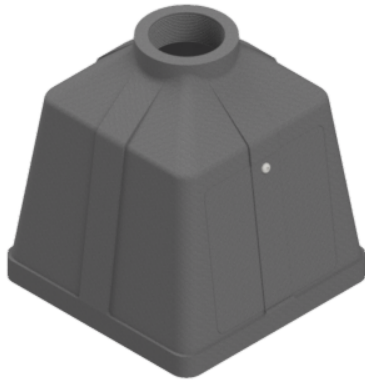
Note: 1. All assemblies are supplied standard with stainless fasteners.
2. See Reference Section v page for available paint colors.



Square Pedestal Bases

Iron

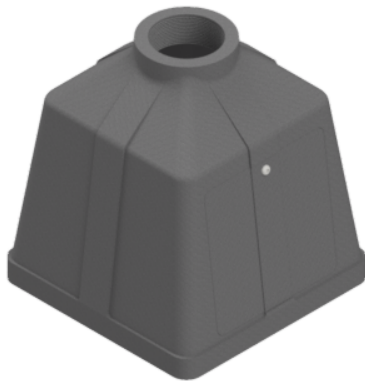
Pelco offers aluminum, iron, and plastic bases in various sizes for both low and high load applications, as well as poles in both aluminum and steel. Pelco's PB-5334 and PB-5335 cast aluminum square bases are FHWA certified and meets or exceeds AASHTO break-away requirements. Plastic replacement doors offer an economical way to deter vandalism.



Square Base Assembly, Iron w/ Iron Door

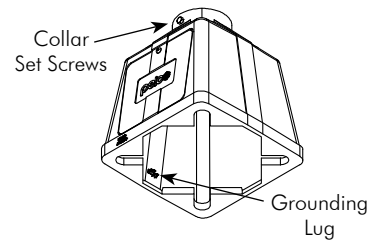
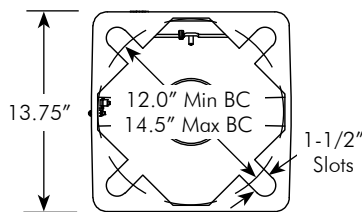
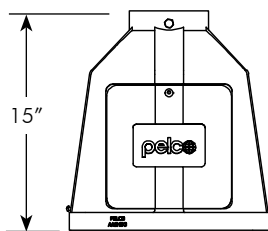
	Set Screws in Collar	Grounding Lug	Coating
PB-5308	- <input type="checkbox"/>	- <input type="checkbox"/>	- <input type="checkbox"/>
	1S=1 Hex Bolt 3S=3 Set Screws Blank=None	GL=Grounding Lug Blank=None	GLV=Galvanized P__=Paint

Square Base Assembly, Iron w/ Iron Door



	Set Screws in Collar	Grounding Lug	Coating
PB-5511	- <input type="checkbox"/>	- <input type="checkbox"/>	- <input type="checkbox"/>
	1S=1 Hex Bolt 3S=3 Set Screws Blank=None	GL=Grounding Lug Blank=None	GLV=Galvanized P__=Paint

Note:
"Buy American" Certification available upon request at time of order.

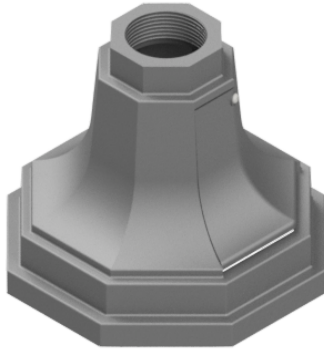


Note: 1. All assemblies are supplied standard with stainless fasteners.
2. See Reference Section v page for available paint colors.



Octagonal Pedestal Bases Aluminum

Pelco offers aluminum, iron, and plastic bases in various sizes as well as poles in aluminum and steel. Pelco's PB-5334 and PB-5335 cast aluminum square bases are FHWA certified and meets or exceeds AASHTO break-away requirements. Plastic replacement doors offer an economical way to deter vandalism.



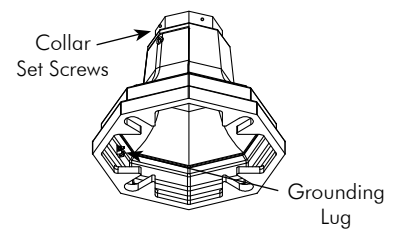
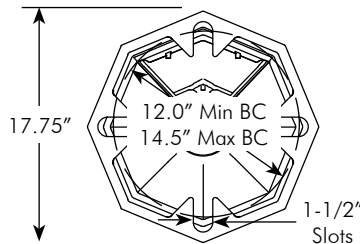
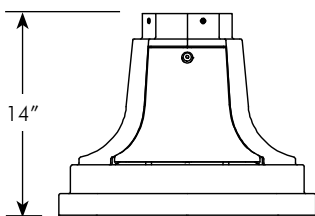
Octagonal Base Assembly, Alum w/ Alum Door

PB-5349	-	<input type="checkbox"/>	-	<input type="checkbox"/>	-	<input type="checkbox"/>
		Set Screws in Collar		Grounding Lug		Coating
		1S=1 Hex Bolt 4S=4 Set Screws Blank=None		GL=Grounding Lug Blank=None		PNC=Process No Color P__=Paint

Octagonal Base Assembly, Alum Slip Fit w/ Alum Door



PB-5350	-	<input type="checkbox"/>	-	<input type="checkbox"/>
		Grounding Lug		Coating
		GL=Grounding Lug Blank=None		PNC=Process No Color P__=Paint



Note: 1. All assemblies are supplied standard with stainless fasteners.
2. See Reference Section v page for available paint colors.

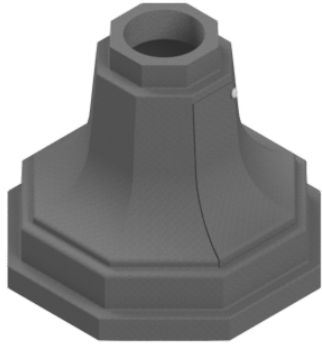


Octagonal Pedestal Bases Iron

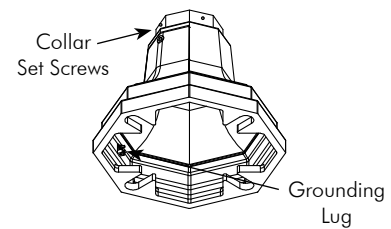
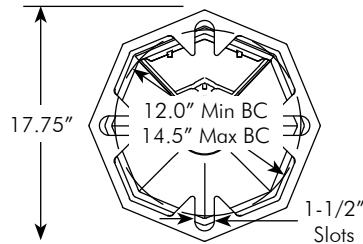
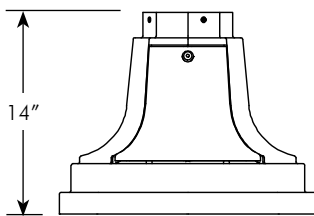
Pelco offers aluminum, iron, and plastic bases in various sizes as well as poles in aluminum and steel. Pelco's PB-5334 and PB-5335 cast aluminum square bases are FHWA certified and meets or exceeds AASHTO break-away requirements. Plastic replacement doors offer an economical way to deter vandalism.



Octagonal Base Assembly, Iron w/ Iron Door



PB-5310	-	<input type="checkbox"/>	-	<input type="checkbox"/>	-	<input type="checkbox"/>
		1S=1 Hex Bolt 4S=4 Set Screws Blank=None		GL=Grounding Lug Blank=None		GLV=Galvanized P__=Paint

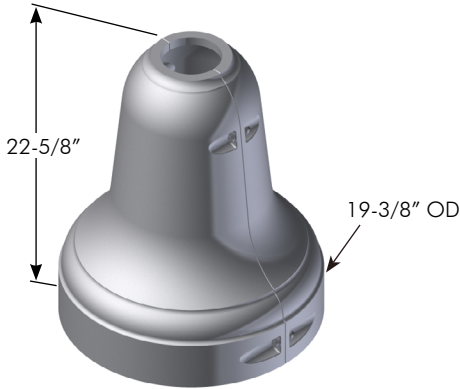


Note: 1. All assemblies are supplied standard with stainless fasteners.
2. See Reference Section v page for available paint colors.



Pedestal Bases

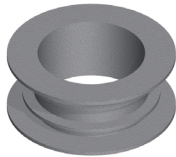
Pelco offers aluminum, iron, and plastic bases in various sizes as well as poles in aluminum and steel. Pelco's PB-5334 and PB-5335 cast aluminum square bases are FHWA certified and meets or exceeds AASHTO break-away requirements. Plastic replacement doors offer an economical way to deter vandalism.



2-Piece Base for 4-1/2" OD Pole, Plastic

PB-5303-PNC

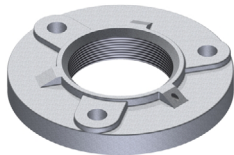
Note:
High Density Crosslinkable Polyethylene Pedestal Pole Base.
Complete with all hardware. No anchor bolts required.



2-Piece Reducer, Alum

PB-5328-PNC

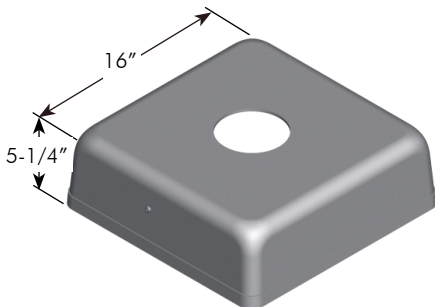
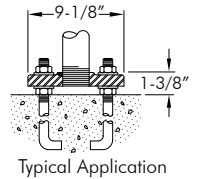
Note:
2-Piece Aluminum Reducer for PB-5303-PNC Base. (Reduces 4-1/2" OD to 3-1/2" OD)



Flange Base, 4"-8NPT, Galv Iron

PB-5304-GLV

Note:
Three 13/16" mounting holes on 7-1/4" bolt circle.



2-Piece Square Cover, Alum

PB-5399 - Pole Diameter - Coating
 4.5=4.5" OD PNC=Process No Color
 8=8" OD P__=Paint

Note:
For 4-1/2" - 8" OD Pole (15" Max. Bottom Opening). Complete with all hardware.

Note: 1. All assemblies are supplied standard with stainless fasteners.
 2. See Reference Section v page for available paint colors.

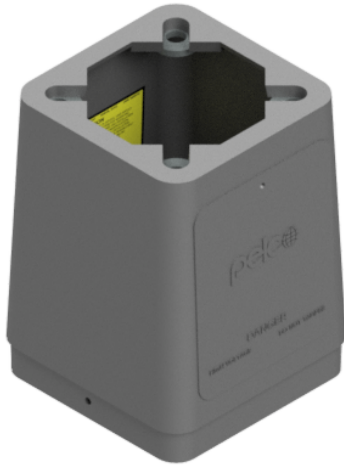


Transformer Bases

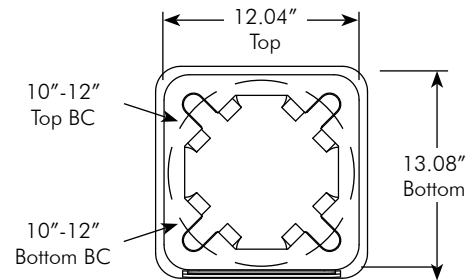
Pelco's Transformer bases stand 17" tall and comes complete with an aluminum Pelco door, latch, and 8 heavy duty galvanized steel washers. A hardware kit for mounting base plate to top of base is optional.



Transformer Base , TB2-17, Alum w/ Pelco Door & Galvanized Washers



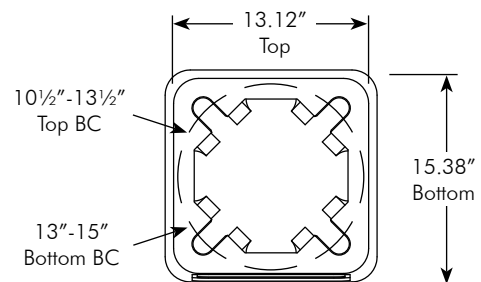
PB-5514 - -
 Hardware Kit Coating
 Blank=None PNC=Process No Color
 HK=Hardware Kit P__=Paint



Transformer Base , TB1-17, Alum w/ Pelco Door & Galvanized Washers



PB-5517 - -
 Hardware Kit Coating
 Blank=None PNC=Process No Color
 HK=Hardware Kit P__=Paint



Note: 1. Hardware kits are galvanized steel.
 2. See Reference Section v page for available paint colors.



Transformer Bases

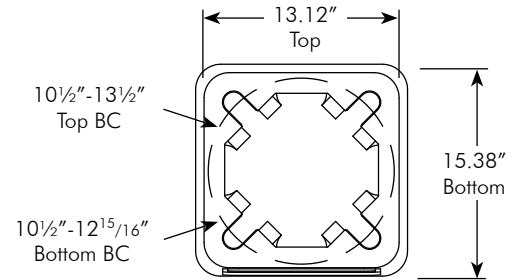
Pelco's Transformer bases stand 17" tall and comes complete with an aluminum Pelco door, latch, and 8 heavy duty galvanized steel washers. A hardware kit for mounting base plate to top of base is optional.



Transformer Base , TB1-17 Modified, Alum w/ Pelco Door & Galvanized Washers



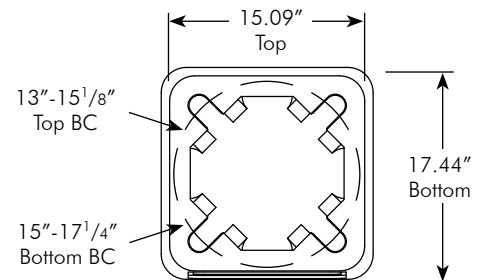
PB-5538 - -
 Hardware Kit Coating
 Blank=None PNC=Process No Color
 HK=Hardware Kit P__=Paint



Transformer Base , TB3-17, Alum w/ Pelco Door & Galvanized Washers



PB-5555 - -
 Hardware Kit Coating
 Blank=None PNC=Process No Color
 HK=Hardware Kit P__=Paint



Note: 1. Hardware kits are galvanized steel.
 2. See Reference Section v page for available paint colors.



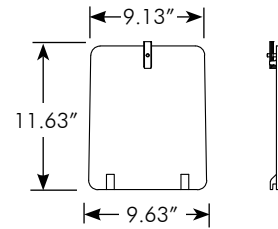
Transformer Bases

Pelco's Transformer bases stand 17" tall and comes complete with an aluminum Pelco door, latch, and 8 heavy duty galvanized steel washers. An aluminum door and hardware kit for mounting base plate to top of base can be ordered separately.



Door w/ Latch, Transformer Base, Alum For TB1-17, TB2-17, & TB3-17 Base

PB-0686- Coating
 PNC=Process No Color
 P_ =Paint



Note:
 For plastic replacement door see PB-0522-16 on page T11-24.
 For aluminum theft deterrant doors see PB-5520 on page T13-7.



Hardware Kit , Transformer Base 1"-8NC x 4", Set of 4, Galvanized

PB-5437-GLV

Note:
 For mounting base plates to the top of Transformer Bases.
 Includes 4 Hex Head Bolts, 8 Washers, 4 Lock Washers, and 4 Hex Nuts.

Note: 1. All assemblies are supplied standard with stainless fasteners.
 2. See Reference Section v page for available paint colors.

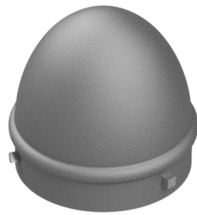


Pole & Arm Caps

Pelco offers pole and arm caps in various sizes in both aluminum and steel. Caps for 4-1/2" OD posts are available in aluminum and ABS plastic.

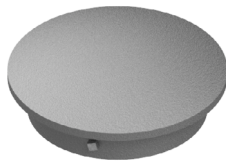


Pole Cap, Acorn Type, Alum



Diameter Range:	Part No:
3"	PB-5403 - <input type="text"/> Coating
3-1/2"	PB-5407 - <input type="text"/>
4-1/2"	PB-5401 - <input type="text"/>

PNC=Process No Color
P_ =Paint



Pole Cap, Dome Type, Alum, 4-1/2" OD Pole

PB-5402 - Coating

PNC=Process No Color
P_ =Paint

Note: 1. All assemblies are supplied standard with stainless fasteners.
2. See Reference Section v page for available paint colors.

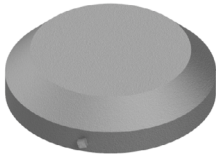


Pole & Arm Caps

Pelco offers pole and arm caps in various sizes in both aluminum and steel. Caps for 4-1/2" OD posts are available in aluminum and ABS plastic.



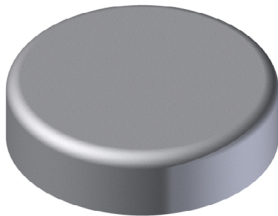
Pole & Arm Cap, Alum



Diameter Range:	Part No:
2-5/16" to 3-1/2"	AP-0101 - <input type="text"/> <small>Coating</small>
3" to 4"	AP-0102 - <input type="text"/>
4-3/16" to 5-3/16"	AP-0103 - <input type="text"/>
5-3/16" to 6-3/16"	AP-0104 - <input type="text"/>
6-1/8" to 7-1/8"	AP-0105 - <input type="text"/>
7-3/16" to 8-1/4"	AP-0106 - <input type="text"/>
8-3/16" to 9-3/16"	AP-0107 - <input type="text"/>
9-7/16" to 10-7/16"	AP-0108 - <input type="text"/>

PNC=Process No Color
P__=Paint

Pole & Arm Cap, Alum



Diameter Range:	Part No:
10-11/16" to 11-11/16"	AP-0109 - <input type="text"/> <small>Coating</small>
11-7/8" to 12-11/16"	AP-0110 - <input type="text"/>

PNC=Process No Color
P__=Paint

Note: 1. All assemblies are supplied standard with stainless fasteners.
2. See Reference Section v page for available paint colors.

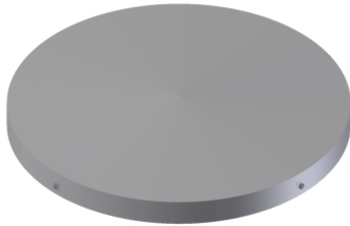


Pole & Arm Caps

Pelco offers pole and arm caps in various sizes in both aluminum and steel. Caps for 4-1/2" OD posts are available in aluminum and ABS plastic.



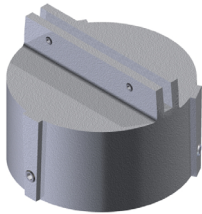
Pole Cap, Steel



AP-0450 - -
Pole Diameter See Table Coating P__=Paint

Pole Dia.	Diameter Range
13.25	12.57"-13.38" OD
14.25	13.39"-14.38" OD
15.25	14.39"-15.38" OD
16.25	15.39"-16.38" OD
17.25	16.39"-17.38" OD
18.25	17.39"-18.38" OD
19.25	18.39"-19.38" OD
20.25	19.39"-20.38" OD
21.25	20.39"-21.38" OD
22.25	21.39"-22.38" OD
23.25	22.39"-23.38" OD
24.25	23.39"-24.38" OD

Post Cap for Sign Blade, Alum



Diameter Range:	Sign Blade	Part No:
4-1/2" OD	Extruded	SH-1608 - <input type="text"/> <small>Coating</small>
4-1/2" OD	Flat	SH-1615 - <input type="text"/>

PNC=Process No Color
P__=Paint

Pole Cap, ABS Plastic



Diameter Range:	Part No:
Up to 4" OD	AP-0805-PNC
Up to 5" OD	AP-0806-PNC

Note: 1. All assemblies are supplied standard with stainless fasteners.
 2. See Reference Section v page for available paint colors.

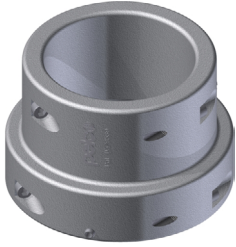


Collars & Adapters

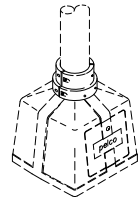
Pole and base collar assemblies, for both square and octagonal bases, are available in highwind areas to add strength and help prevent loosening of connection.



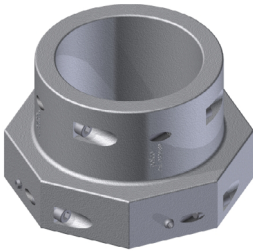
Pole & Base Collar Assembly, Alum Square Base



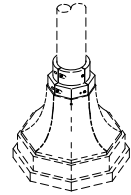
PB-5325 - Coating
 PNC=Process No Color
 P__=Paint



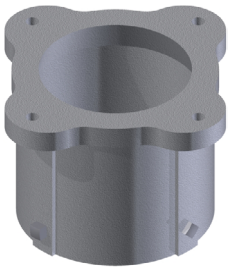
Pole & Base Collar Assembly, Alum Octagonal Base



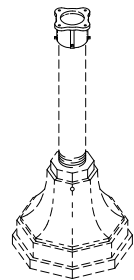
PB-5326 - Coating
 PNC=Process No Color
 P__=Paint



Pedestal Adapter, 4" (4-1/2" OD Pole), Alum 6-1/2" Bolt Circle



SE-3104 - Coating
 PNC=Process No Color
 P__=Paint

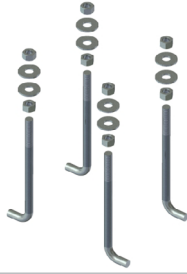


Note: 1. All assemblies are supplied standard with stainless steel fasteners.
 2. See Reference Section v page for available paint colors.



Anchor Bolt Sets

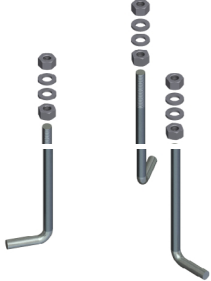
Pelco's galvanized anchor bolt sets are available in a variety of sizes.



Anchor Bolt Set of 4 w/ Hardware 1/2"-13NC x 7-1/2", Galv

AP-1046-GLV

Note: Includes 4 Bolts, 8 Washers, and 8 Nuts.



Anchor Bolt Set of 3 w/ Hardware 3/4"-10NC x 18", Galv

PB-5305-GLV

Note: Includes 3 Bolts, 6 Washers and 6 Nuts.



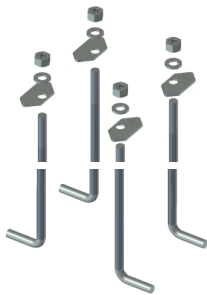
Anchor Bolt Set of 4 w/ Hardware 3/4"-10NC x 18", Galv

PB-5306-GLV

Note: Includes 4 each: Bolts, Washers and Nuts.

PB-5518-GLV

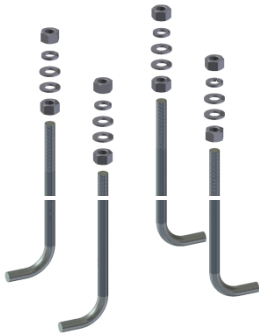
Note: Includes 4 Bolts, 8 Washers and 8 Nuts.



Anchor Bolt Set of 4 w/ Plate Washers 3/4"-10NC x 18", Galv

PB-5371-GLV

Includes 4 Bolts, 4 Plate Washers, 4 Washers, and 4 Nuts.



Anchor Bolt Set of 4 w/ Hardware 1"-8NC x 36", Galv

AP-1007-  -GLV

Template

- 1=12" Bolt Circle
- 2=12.75" Bolt Circle
- 3=11" Bolt Circle

Includes 4 Bolts, 4 Lock Washers, 8 Washers, and 8 Nuts.

Note: 1. All assemblies are supplied standard with galvanized fasteners.

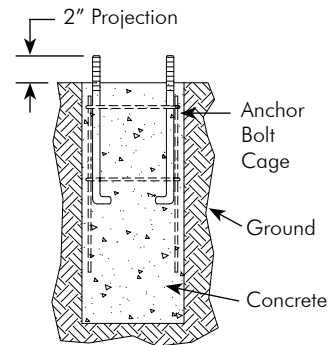
Anchor Bolt Cages

Anchor bolt cages allow the critical bolt circle dimensions to be maintained when the steel is cast into the concrete. These cages may be used instead of anchor bolt sets.



Anchor Bolt Cage, Galv 1/2"-13NC x 7-1/2" w/ 36" Rebar 5-1/2" Bolt Circle

AP-1049-GLV

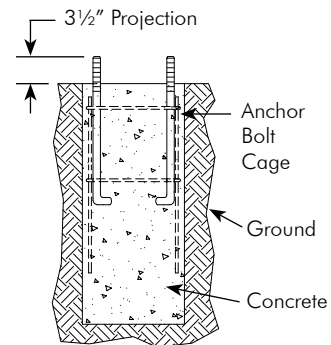


Typical Footing Detail



Anchor Bolt Cage, Galv 3/4"-10NC x 18" w/ 36" Rebar 8-1/2" Bolt Circle

AP-1089-GLV

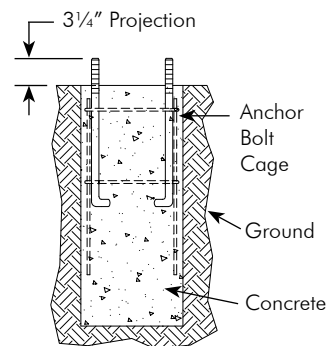


Typical Footing Detail



Anchor Bolt Cage, Galv 3/4"-10NC x 18" w/ 36" Rebar 13" Bolt Circle

AP-1095-GLV



Typical Footing Detail

Note: 1. All assemblies are supplied standard with galvanized fasteners.
2. Footing to be determined by end user.



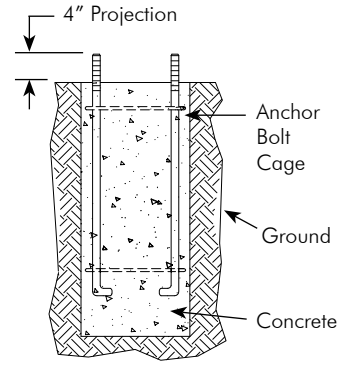
Anchor Bolt Cages

Anchor bolt cages allow the critical bolt circle dimensions to be maintained when the steel is cast into the concrete. These cages may be used instead of anchor bolt sets.



Anchor Bolt Cage, Galv
1"-8NC x 36"
15" Bolt Circle

AP-3136-GLV

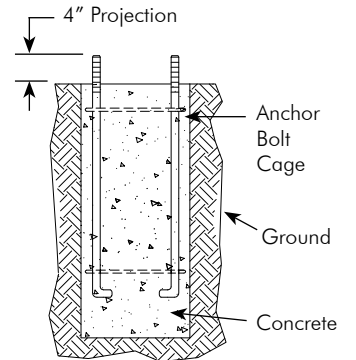


Typical Footing Detail



Anchor Bolt Cage, Galv
1"-8NC x 36"
11" Bolt Circle,

AP-3129-GLV

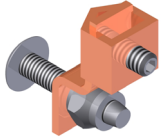


Typical Footing Detail

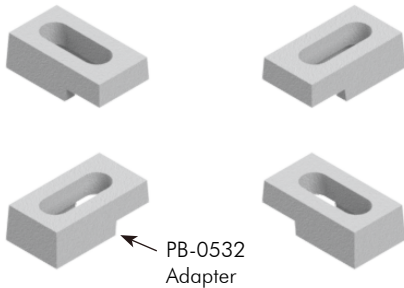
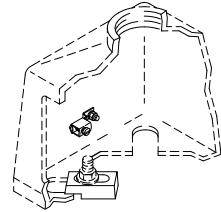
Note: 1. All assemblies are supplied standard with galvanized fasteners.
2. Footing to be determined by end user.

Pole & Base Accessories

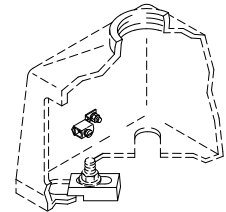
Pelco offers various accessories for pedestal bases from grounding lugs to plastic hand hole covers.



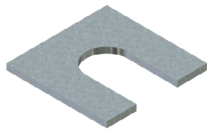
PB-5323-PNC **Grounding Lug
w/ Mounting Hardware**



PB-5446-PNC **Anchor Bolt Adapter,
Set of 4, Alum**

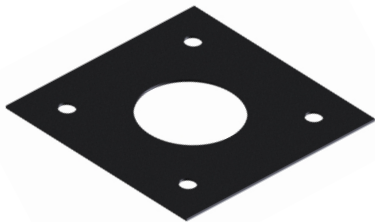


Note: Reduces minimum bolt circle on square pedestal base from 12" to 8-1/8" BC.



PB-0602-GLV **Shim, 1/16" x 2" x 2", Steel, Galv**

PB-0603-GLV **Shim, 1/8" x 2" x 2", Steel, Galv**



PB-0550-PNC **Template, ABS Plastic
13" Bolt Circle
for Square and Octagonal Bases**



PB-5356-PNC **Universal Hand Hole Cover, ABS Plastic
fits 2-3/4" x 4-1/2" to 5" x 8"**

Note: 1. All assemblies are supplied standard with galvanized fasteners.



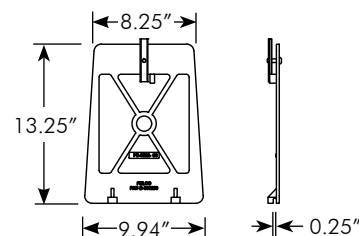
Plastic Replacement Doors

Plastic replacement doors for lighting pole bases are fabricated from tough hi-density UV inhibited plastic which offers excellent impact resistance. They give the appearance of aluminum, never require paint, and are a significant deterrent to vandalism since they have no scrap value. Pelco's doors withstand temperature extremes of -78° to +150° fahrenheit.



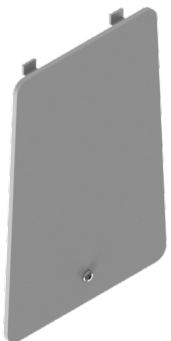
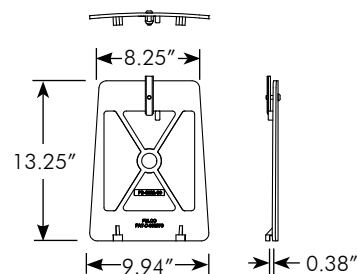
**Door Assy, Plastic
Flat w/ Latch on Top**

PB-0522-08-PNC



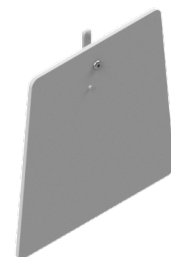
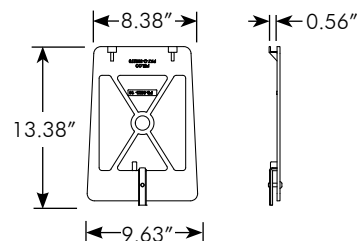
**Door Assy, Plastic
Curved w/ Latch on Top**

PB-0522-09-PNC



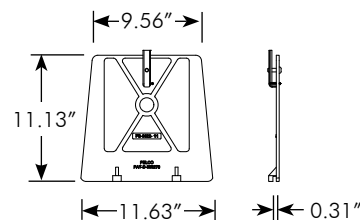
**Door Assy, Plastic
Flat w/ Latch on Bottom**

PB-0522-10-PNC



**Door Assy, Plastic
Flat Short w/ Latch on Top**

PB-0522-11-PNC



Note: 1. All assemblies are supplied standard with stainless steel fasteners.

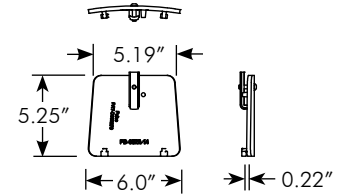
Plastic Replacement Doors

Plastic replacement doors for lighting pole bases are fabricated from tough hi-density UV inhibited plastic which offers excellent impact resistance. They give the appearance of aluminum, never require paint, and are a significant deterrent to vandalism since they have no scrap value. Pelco's doors withstand temperature extremes of -78° to +150° fahrenheit.



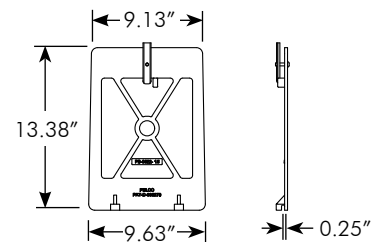
Door Assy, Plastic Curved Small w/ Latch on Top

PB-0522-14-PNC



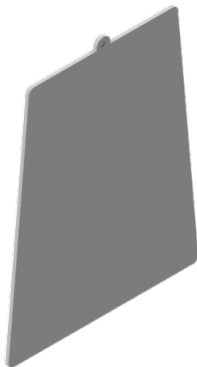
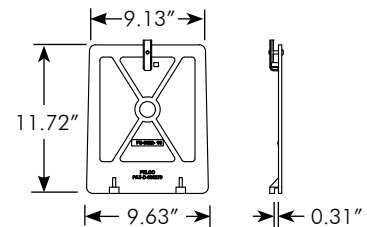
Door Assy, Plastic Flat w/ Latch on Top

PB-0522-15-PNC



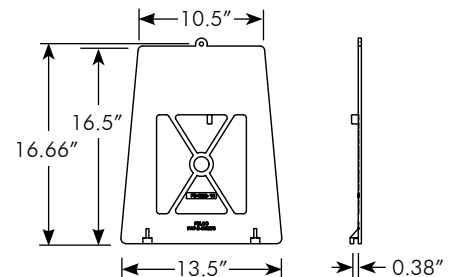
Door Assy, Plastic Flat Short w/ Latch on Top

PB-0522-16-PNC



Door Assy, Plastic Flat Short w/ Tab on Top, No Latch

PB-0522-19-PNC



Note: 1. All assemblies are supplied standard with stainless steel fasteners.

