

Table of Contents

| | |
|------------------------------------|------------|
| Coatings | ii |
| Conversion Charts | iii |
| General Notes | iv |
| Shipping Notice..... | v |
| Material Certification..... | vi |

Product:

| | |
|--------------------------------------|--------------|
| Astro-Brac..... | 1-6 |
| Free-Swinging | 7-18 |
| Side-of-Pole..... | 19-20 |
| Post Top | 21-22 |
| Camera Mounts | 23-24 |
| Sign Mounts..... | 25-30 |
| IntelliCross APS..... | 31-32 |
| Push Buttons..... | 33-35 |
| Pedestrian Signs | 36-37 |
| Pedestal Bases, Poles | 39-40 |
| Traffic Accessories, GPL..... | 41 |
| AeroFlex Backplates..... | 43-46 |

Notes: Materials, descriptions, and other specifications subject to change without notification.
FDOT certification information provided is for reference only. Please refer to FDOT APL list which can be found at <https://fdotwp1.dot.state.fl.us/ApprovedProductList/Specifications> for the most up to date and accurate information.



| CODE | COATING |
|------|------------------------------|
| PNC | Process No Color |
| BRS | Brass |
| CRM | Chrome |
| GLV | Galvanized |
| ZN1 | Zinc Bright |
| ZN2 | Zinc Yellow |
| P_ _ | Paint (<i>add color #</i>) |

| POWDER COAT STANDARD COLORS | |
|--------------------------------|-------------------------------|
| P29 | Federal Yellow |
| P30 | Automatic Green (dark) |
| P32 | Clear Coat |
| P33 | Gloss Black |
| P34 | Flat Black |
| P35 | Iron Gray |
| P36 | New York State Green (forest) |
| P39 | Bronze |
| P40 | Silver |
| P45 | Super Wet White |
| P59 | Textured Black |
| P63 | Mocha Brown |
| P71 | Dark Green |
| P75 | Fir Green |
| P76 | Forest Green |

Note:

Pelco can match your custom colors.

Please provide the following and contact Pelco for pricing.

- For custom powder: RAL number or paint chip.
- For wet paint: Federal Standard 595 paint code or paint chip.

Special setup and paint charge will apply.

| Astro-Brac Cable Length Stellar, Atlas, Galaxy | |
|---|--------------------------|
| Cable Length | Max Pole Diameter |
| 62" | 7.0" |
| 84" | 10.5" |
| 96" | 12.4" |
| 120" | 16.2" |
| 144" | 20.1" |
| 220" | 32.2" |
| 280" | 35.0" |

| Astro-Brac Cable Length Mini-Brac, Triton | |
|--|--------------------------|
| Cable Length | Max Pole Diameter |
| 45" | 11.1" |
| 62" | 16.6" |
| 84" | 22.0" |

Note:

Circumference to Diameter Conversion

Circumference ÷ pi = Diameter

Example: (12" ÷ 3.14) = 3.82"

| TUBE LENGTH Standard & Tri-Bolt Signals | |
|--|-----------------------------------|
| 23" | 1-section 12" |
| 37" | 2-section 12" & 5-section cluster |
| 46" | 3-section 12" |
| 58" | 4-section 12" |
| 74" | 5-section 12" |

| TUBE LENGTH 1-1/2" NPS OPS Signals | |
|---|---------------|
| 50" | 3-section 12" |
| 66" | 4-section 12" |
| 82" | 5-section 12" |

SHIPMENT & DELIVERY

Pelco is very diligent in selecting the most competent and economical carrier. However, Pelco will use the carrier of your choice if indicated on the face of your PO. See Shipping Notice, on page v of this catalog, for shipment specifics and freight claims.

RETURNED GOODS

In order to expedite handling, written authorization must accompany all returned goods. Upon request, a Returned Merchandise Authorization (RMA) will be issued and must be used. Use this RMA as a packing list when returning a shipment. A restocking fee plus freight charges shall be assessed against the return of goods unless return of goods was due to an error of Pelco.

REQUESTS FOR CERTIFICATIONS

Representative material test reports are available on request for most Pelco products. If your order contains materials that require lot or heat treat number traceability, or if the materials must be of domestic origin, those requirements must be clearly stated at the time your order is placed.

GENERAL WARRANTY

All statements, technical information and recommendations contained in Pelco Product Brochures and Bulletins are based on tests Pelco believes to be reliable. However, the accuracy or completeness thereof is not guaranteed and the following is made in lieu of all warranties, expressed or implied.

LIMITED WARRANTY

Pelco's only obligations shall be to replace such quantity of the product proven to be defective. Repair or replacement of any product will be made at Pelco's facilities. The extent of repair or replacement is at Pelco's discretion. Transportation to and from Pelco's facilities is the responsibility of the buyer.

Pelco shall not be liable for injury, loss or damage direct or consequential arising out of the use of, or the inability to use the product. Before using, user shall determine the suitability of the product for his intended use, and assumes all risk and liability whatsoever in connection therewith. No statement or recommendation not contained herein shall have any effect unless in an agreement signed by the officers of Pelco Products Inc.

WARRANTY PERIOD

Unless otherwise noted, standard product warranty is 12 months from date of shipment.

| Section | Description | Warranty Period | Replacement Turnaroud |
|---------|--|-----------------|-----------------------|
| 650 | Vehicular Traffic Signal Assys, Backplates, Visors | 3 Years | 30 Days |
| 659 | Mast Arm, Span Wire, Pole Mountings | 3 Years | 10 Days |
| 665 | Pedestrian Detection System, Push Buttons | 5 Years | 10 Days |

NOTES

Pelco product names are those used in the current Pelco ERP system, so some may differ from the product descriptions on the FDOT APL list. However, the products are identical to those listed on the FDOT APL.

Flat Black "-P34" is the FDOT standard for powder coated finishes and the "-PNC" is for parts that are provided in the "as cast" or un-painted/un-coated finish.

Recent FDOT changes have removed the APL approval requirement for some mounting assemblies and associated hardware. Several of the items in Pelco's Florida Catalog will no longer have a FDOT APL Certification number. These items can still be shipped to Florida and used on FDOT inspected projects. These items must still comply with the current edition of the Florida Department of Transportation Standard Specifications for Road and Bridge Construction.

Please visit <https://fdotwp1.dot.state.fl.us/ApprovedProductList/Specifications> for a complete list of approved products.



COPY OF SHIPMENT NOTICE INCLUDED WITH EACH SHIPMENT

NOTICE SHIPMENTS MADE WITH FACTORY AS F.O.B. POINT

CARRIER HAS ACCEPTED SHIPMENT IN GOOD CONDITION-
LOST OR DAMAGED GOODS ARE THE CARRIER'S RESPONSIBILITY in all shipments of this type.

PELCO'S Responsibility For This Shipment Has Now Ceased.

CHECK YOUR SHIPMENT CAREFULLY WHEN DELIVERED to see that it is in good order and received complete. When packages check short or are in bad condition, have the Carrier's agent make notation of this fact in detail on the freight bill or express receipt and then require that he sign it.

LOST OR DAMAGED GOODS ARE THE CARRIER'S RESPONSIBILITY in all LTL (less than truckload) shipments. In TL (truckload) shipments, the Carrier is responsible for damage to exposed surfaces of the goods (top and ends) caused by collision with other vehicles or objects when the Carrier is negligent, and by loading other freight on or against Pelco goods. When the trailer itself shows evidence of fresh damage, call at once for inspection of the contents just as though it were an LTL shipment.

CONCEALED LOSS OR DAMAGE DISCOVERED AFTER DELIVERY of shipment must be reported to the delivering Carrier upon discovery, and in any event within 15 days after receipt. Hold goods, containers, and packing materials in exact condition as found for inspection by the Carrier. An inspector for the Carrier should call within 48 hours. If nothing is heard in that time, notify them by registered mail and get a receipt. The Carrier will issue an inspection report and give you a copy which must be used to support your claim.

FAILURE TO COMPLY WITH ANY OF THE FOREGOING REGULATIONS IS REGARDED AS INDICATING COMPLETE DELIVERY OF FREIGHT IN GOOD CONDITION.

Make Your Claim Promptly
Carrier Will Not Consider a Claim Unless Presented Within 9 Months After Receipt of Shipment.

IMPORTANT!

DO NOT DEDUCT THE AMOUNT OF LOSS OR DAMAGE from Pelco invoice while awaiting adjustment of a claim, as we can not guarantee safe delivery for actions beyond our control.

Please do not return goods to Pelco or instruct Carriers to return goods without first securing written authorization and shipping instructions.

SHIPMENTS MADE WITH DESTINATION AS F.O.B. POINT

-CARRIER HAS ACCEPTED SHIPMENT IN GOOD CONDITION-

CHECK YOUR SHIPMENT CAREFULLY WHEN DELIVERED to see that it is in good order and received complete.

When packages check short or are in damaged condition, have the carriers agent make notation of this fact on the freight bill or express receipt, and then require that he sign it.

Check your shipment immediately to make sure the contents agree with the Pelco packing list enclosed and to determine if any damage has occurred during transit.

Any shortages and or concealed damages MUST be reported to Pelco within 10 DAYS.

FAILURE TO COMPLY WITH THE FOREGOING IS REGARDED AS AN INDICATION THAT YOUR SHIPMENT HAS ARRIVED IN SATISFACTORY CONDITION AND THAT IT IS COMPLETE AS SHOWN ON OUR PACKING LIST.

Please do not return damaged goods to Pelco without first securing authorization and shipping instructions.

Pelco will make every effort possible to effect prompt correction of any short or damaged goods when claims are made within these guidelines.



320 W. 18th
Edmond, OK 73013
(405)340-3434 FAX:(405)340-3435



All requests for material certifications must be submitted at the time your purchase order is placed. A charge of 5% will be applied to all sales of items that require a certification, with a minimum fee of \$75 and maximum fee of \$500. Please specify type of certification required.

Material Certification Types & Definitions:

Type 1 - Statement of Conformance

- A Type 1 cert is a basic document that provides a statement of conformance to general specifications, Pelco specifications, and/or customer specifications listed on the PO.
- A Type 1 certs also state that the certified material was manufactured by production processes which are monitored and/or inspected for conformance to specific requirements.

Type 2 - Mill Test Report (Typical)

- A Type 2 cert provides a representative mill test report for each applicable raw material in an assembly.
- A type 2 does not distinguish which specific batch, or shipment, that the raw material was pulled from, rather it provides a typical mill test report (MTR) for each certified raw material in the assembly.

Type 3 - Mill Test Report (Actual)

- A Type 3 cert includes a mill test report (MTR) for each batch, or shipment, of raw material that goes into making an assembly.
- There may be multiple MTRs for each type of raw material used in the assembly.
- Each certified component can be traced back to the lot or heat number of the raw material used to manufacture the component.

Type 4 - Lab Test Report (Typical)

- A Type 4 cert provides a representative independent laboratory test report for each applicable raw material in an assembly.
- A Type 4 does not necessarily represent the specific batch, or shipment, that the raw material was pulled from, rather it provides a typical lab test report for each certified raw material in the assembly.
- Special request only. Advance notice required.

Type 5 - Lab Test Report (Actual)

- A Type 5 cert provides an actual independent laboratory test report for each applicable raw material in an assembly.
- Test samples originate from the specific batches, or shipments, of raw material used to make the assembly.
- Special request only. Advance notice required.

Buy America/Buy America Build America (BABA) – Statement of Conformance

- A Buy America/BABA cert provides a statement of material conformance to the Buy America provisions of the Surface Transportation Assistance Act (STAA)/Infrastructure Investment and Jobs Act (The Act).
- Applicable if federal funds are being used in a construction project.

Buy America– Statement of Conformance

- A Buy American cert provides a statement of material conformance to the Buy American provisions of the American Recovery and Reinvestment Act (ARRA).
- Applicable in the construction, alteration, maintenance, or repair of a public building or work and authorized by a Federal Procurement Number.



Astro-Brac Galaxy Assy, 1-Way Stainless Cable Mount, Alum

APL Certification #659-031-027

SP-1130-FL - - -

Signal Section Cable Length Coating

1=23" Tube See Table PNC=Process No Color
2=37" Tube P__=Paint
3=46" Tube
4=58" Tube
5=74" Tube

| | | | | | | | |
|-------------------|------|-------|-------|-------|-------|-------|-------|
| Cable Length: | 62" | 84" | 96" | 120" | 144" | 220" | 280" |
| Maximum Pole Dia: | 7.0" | 10.5" | 12.4" | 16.2" | 20.1" | 32.2" | 35.0" |



Astro-Brac Stellar Assy, 1-Way Stainless Cable Mount, Alum

APL Certification #659-031-011

SP-1006-FL - - -

Signal Section Cable Length Coating

1=23" Tube See Table PNC=Process No Color
2=37" Tube P__=Paint
3=46" Tube
4=58" Tube
5=74" Tube

| | | | | | | | |
|-------------------|------|-------|-------|-------|-------|-------|-------|
| Cable Length: | 62" | 84" | 96" | 120" | 144" | 220" | 280" |
| Maximum Pole Dia: | 7.0" | 10.5" | 12.4" | 16.2" | 20.1" | 32.2" | 35.0" |



Astro-Brac Atlas Assy, 1-Way Articulating Stainless Cable Mount, Alum

APL Certification # 659-031-020

SP-1119-FL - - -

Signal Section Cable Length Coating

1=23" Tube See Table PNC=Process No Color
2=37" Tube P__=Paint
3=46" Tube
4=58" Tube
5=74" Tube

| | | | | | | | |
|-------------------|------|-------|-------|-------|-------|-------|-------|
| Cable Length: | 62" | 84" | 96" | 120" | 144" | 220" | 280" |
| Maximum Pole Dia: | 7.0" | 10.5" | 12.4" | 16.2" | 20.1" | 32.2" | 35.0" |



- Note: 1. All assemblies are supplied standard with stainless steel fasteners, slotted washers, and cables where applicable.
2. See page iii for additional cable length and pole diameter information.
3. See page ii for available paint colors.





Astro-Brac Stellar Assy, 1-Way w/ Terminal Compartment Stainless Cable Mount, Alum

APL Certification #659-031-010

SP-1110-FL - - -
 Signal Section Cable Length Coating
 3=37" Tube See Table PNC=Process No Color
 4=46" Tube P__=Paint
 5=58" Tube

| | | | | | | | |
|-------------------|------|-------|-------|-------|-------|-------|-------|
| Cable Length: | 62" | 84" | 96" | 120" | 144" | 220" | 280" |
| Maximum Pole Dia: | 7.0" | 10.5" | 12.4" | 16.2" | 20.1" | 32.2" | 35.0" |



Master Brac Assy, 1-Way Stainless Cable Mount, Alum

APL Certification #659-031-021

EC-3075 - - -
 Signal Section Cable Length Coating
 1=24" Tube 80=80" PNC=Process No Color
 2=36" Tube 120=120" P__=Paint
 3=48" Tube
 4=60" Tube
 5=72" Tube



- Note: 1. All assemblies are supplied standard with stainless steel fasteners, slotted washers, and cables where applicable.
 2. See page iii for additional cable length and pole diameter information.
 3. See page ii for available paint colors.





Astro-Brac Galaxy Assy, 5-Sec Cluster Stainless Cable Mount, Alum

APL Certification #659-031-026

SP-1132-FL - -

Cable Length Coating
See Table PNC=Process No Color
P__=Paint

| | | | | | | | |
|--------------------------|------|-------|-------|-------|-------|-------|-------|
| Cable Length: | 62" | 84" | 96" | 120" | 144" | 220" | 280" |
| Maximum Pole Dia: | 7.0" | 10.5" | 12.4" | 16.2" | 20.1" | 32.2" | 35.0" |



Astro-Brac Stellar Assy, 5-Sec Cluster Stainless Cable Mount, Alum

APL Certification #659-031-012

SP-1008-FL - -

Cable Length Coating
See Table PNC=Process No Color
P__=Paint

| | | | | | | | |
|--------------------------|------|-------|-------|-------|-------|-------|-------|
| Cable Length: | 62" | 84" | 96" | 120" | 144" | 220" | 280" |
| Maximum Pole Dia: | 7.0" | 10.5" | 12.4" | 16.2" | 20.1" | 32.2" | 35.0" |



- Note: 1. All assemblies are supplied standard with stainless steel fasteners, slotted washers, and cables where applicable.
2. See page iii for additional cable length and pole diameter information.
3. See page ii for available paint colors.



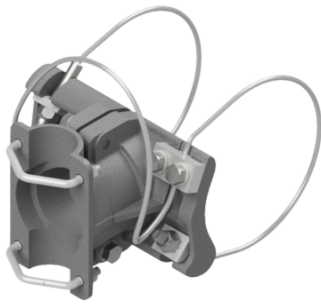


Astro-Brac Clamp Kit, Galaxy Hinged Stainless Cable Mount, Alum

APL Certification #659-031-024

SP-1128-FL - -
 Cable Length Coating
 See Table PNC=Process No Color
 P__=Paint

| | | | | | | | |
|--------------------------|------|-------|-------|-------|-------|-------|-------|
| Cable Length: | 62" | 84" | 96" | 120" | 144" | 220" | 280" |
| Maximum Pole Dia: | 7.0" | 10.5" | 12.4" | 16.2" | 20.1" | 32.2" | 35.0" |

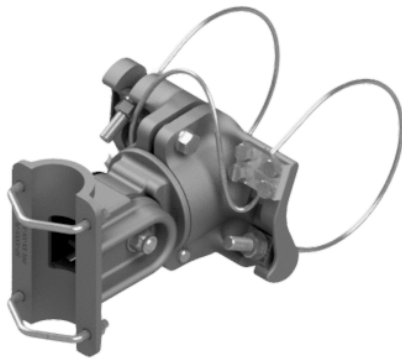


Astro-Brac Clamp Kit, Stellar Stainless Cable Mount, Alum

APL Certification #659-031-009

SP-1079-FL - -
 Cable Length Coating
 See Table PNC=Process No Color
 P__=Paint

| | | | | | | | |
|--------------------------|------|-------|-------|-------|-------|-------|-------|
| Cable Length: | 62" | 84" | 96" | 120" | 144" | 220" | 280" |
| Maximum Pole Dia: | 7.0" | 10.5" | 12.4" | 16.2" | 20.1" | 32.2" | 35.0" |



Astro-Brac Clamp Kit, Atlas Articulating Stainless Cable Mount, Alum

APL Certification #659-031-019

SP-1118-FL - -
 Cable Length Coating
 See Table PNC=Process No Color
 P__=Paint

| | | | | | | | |
|--------------------------|------|-------|-------|-------|-------|-------|-------|
| Cable Length: | 62" | 84" | 96" | 120" | 144" | 220" | 280" |
| Maximum Pole Dia: | 7.0" | 10.5" | 12.4" | 16.2" | 20.1" | 32.2" | 35.0" |

- Note: 1. All assemblies are supplied standard with stainless steel fasteners, slotted washers, and cables where applicable.
 2. See page iii for additional cable length and pole diameter information.
 3. See page ii for available paint colors.



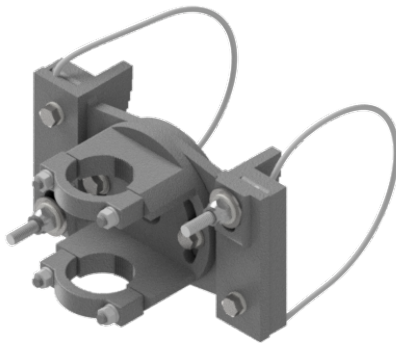


Astro-Brac Free-Swinging Hanger Assy, Galaxy Stainless Cable Mount, Alum

APL Certification #659-031-022

SP-1127-FL - -
 Cable Length Coating
 See Table PNC=Process No Color
 P__=Paint

| | | | | | | | |
|-------------------|------|-------|-------|-------|-------|-------|-------|
| Cable Length: | 62" | 84" | 96" | 120" | 144" | 220" | 280" |
| Maximum Pole Dia: | 7.0" | 10.5" | 12.4" | 16.2" | 20.1" | 32.2" | 35.0" |



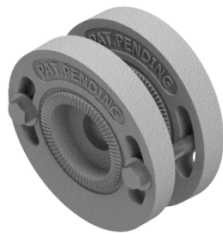
Master Brac Clamp Kit, Stainless Cable Mount, Alum

APL Certification #659-031-021

EC-3075 - 0 - -
 Cable Length Coating
 80=80" PNC=Process No Color
 120=120" P__=Paint

Adapter, Master Brac EZ Attachment, Alum

APL Certification #659-001-028



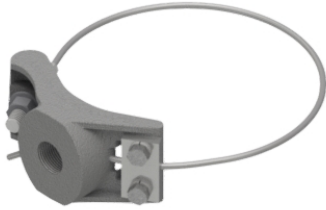
EC-3075-EZ -
 Coating
 PNC=Process No Color
 P__=Paint

- Note: 1. All assemblies are supplied standard with stainless steel fasteners, slotted washers, and cables where applicable.
 2. See page iii for additional cable length and pole diameter information.
 3. See page ii for available paint colors.



Astro Mini-Brac, 3/4"-14 NPT Stainless Cable Mount, Alum

APL Certification #659-038-001



SP-1113-FL - -
 Cable Length Coating
 See Table PNC=Process No Color
 P__=Paint

| | | | |
|-------------------|-------|-------|-------|
| Cable Length: | 45" | 62" | 84" |
| Maximum Pole Dia: | 11.1" | 16.6" | 22.0" |

Astro-Brac Arm Kit, Upper & Lower w/ Thru-Bolts For OPS Signals, Alum

APL Certification #659-001-044



SP-2016-FL -
 Coating
 PNC=Process No Color
 P__=Paint

- Note: 1. All assemblies are supplied standard with stainless steel fasteners, slotted washers, and cables where applicable.
 2. See page iii for additional cable length and pole diameter information.
 3. See page ii for available paint colors.





Span Wire Hanger Assy, Adjustable w/ Tri-Stud Wire Outlet Body & Tether, Alum

APL Certification #659-037-002

SP-1083-FL -

Coating

PNC=Process No Color

P__=Paint



Span Wire Hanger Assy, Adjustable w/ Stabilizer Bar Tether, Alum

APL Certification #659-037-003

SP-1050-FL -

Coating

PNC=Process No Color

P__=Paint



Span Wire Hanger Assy, Adjustable w/ Tether, Alum

APL Certification #659-005-008

SP-1029-FL -

Coating

PNC=Process No Color

P__=Paint

Note: 1. All assemblies are supplied standard with stainless steel fasteners, slotted washers, and cables where applicable.
2. See page ii for available paint colors.





Wire Hanger Assy, Adjustable w/ Tether, Alum

APL Certification #659-005-005

SE-5055 -

Coating

PNC=Process No Color

P__=Paint



Span Wire Hanger Assy, Tri-Stud, Adjustable w/ Tether, Alum

APL Certification #659-005-001

EC-2075-T -

Coating

PNC=Process No Color

P__=Paint



Span Wire Hanger Assy, Single Wire Entrance, Tri-Stud, Adjustable w/ Tether, Alum

APL Certification #659-005-003

EC-2083-T -

Coating

PNC=Process No Color

P__=Paint

Note: 1. All assemblies are supplied standard with stainless steel fasteners, slotted washers, and cables where applicable.
2. See page ii for available paint colors.





Extender, 72" w/ Holes, Alum

APL Certification #659-015-003

SE-0507 - 72-

Coating

PNC=Process No Color
P__=Paint



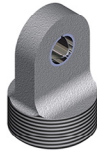
Adapter, Tri-Stud to 1-1/2" NPS, w/ Hardware, Alum

APL Certification #659-013-002

EC-2051 -

Coating

PNC=Process No Color
P__=Paint



Span Wire Adapter w/ Stainless Bushing, Alum

APL Certification #659-016-003

SE-0371 -

Coating

PNC=Process No Color
P__=Paint

Note: 1. All assemblies are supplied standard with stainless steel fasteners, slotted washers, and cables where applicable.
2. See page ii for available paint colors.





Span Wire Hanger Assy, Tri-Stud w/ Signal Closure Kit, Alum

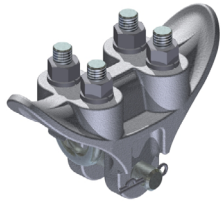
APL Certification #659-037-001

SP-1082-FL -

Coating

PNC=Process No Color

P_ =Paint



Span Wire Clamp, Alum w/ U-Bolts 3/4" Wide Slot

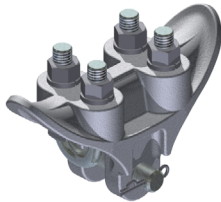
APL Certification #659-010-005

SE-0321-FL-PNC

Note:

Stainless bushing and/or stainless upgrade available.

Specify by including -SB and/or -SS in the part number, i.e., SE-0321-FL-SB-SS-PNC.



Span Wire Clamp, Alum w/ U-Bolts 1/2" Wide Slot

APL Certification #659-010-010

SE-3211-PNC

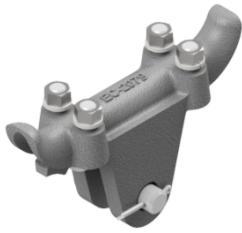
Note:

Stainless bushing and/or stainless upgrade available.

Specify by including -SB and/or -SS in the part number, i.e., SE-3011-SB-SS-PNC.

Note: 1. All assemblies are supplied standard with stainless steel fasteners, slotted washers, and cables where applicable.
2. See page ii for available paint colors.

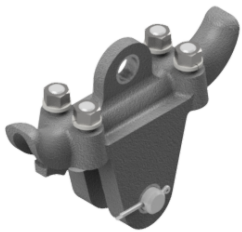




**Span Wire Clamp, Alum w/ U-Bolts
1/2" Wide Slot w/ Stainless Bushing**

APL Certification #659-010-001

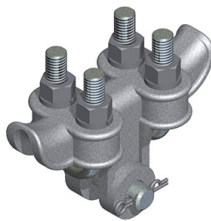
EC-2079-SSB-PNC



**Span Wire Clamp, Single Clevis, Alum w/ U-Bolts
1/2" Wide Slot w/ Stainless Bushing**

APL Certification #659-010-001

EC-2079-PBC-PNC



**Span Wire Clamp, Iron w/ U-bolts
1/2" Wide Slot**

APL Certification #659-010-006

SE-0338-GLV

Note:

Specify stainless upgrade by including -SS in the part number, i.e., SE-0338-SS-PNC.

Note: 1. All assemblies are supplied standard with stainless steel fasteners, slotted washers, and cables where applicable.

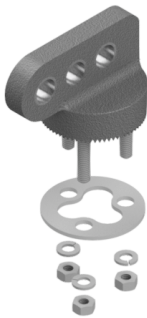




Clevis Adapter, Tri-Stud w/ Stainless Bushing, Alum

APL Certification #659-016-002

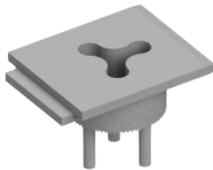
EC-1156-T3 - Coating
PNC=Process No Color
P__=Paint



Disconnect Balancer, Tri-Stud w/ Stainless Bushing, Alum

APL Certification #659-014-003

EC-1157-BT - Coating
PNC=Process No Color
P__=Paint



Disconnect Hub, Tri-Stud

APL Certification #659-004-001

EC-2152-T - Coating
PNC=Process No Color
P__=Paint

Note: 1. All assemblies are supplied standard with stainless steel fasteners, slotted washers, and cables where applicable.
2. See page ii for available paint colors.

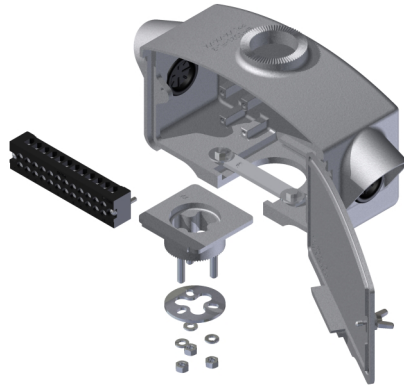




**Disconnect Hanger Assy,
12 Circuit w/ 4' Harness &
2" Non-Threaded Top, Alum**

APL Certification #659-004-018

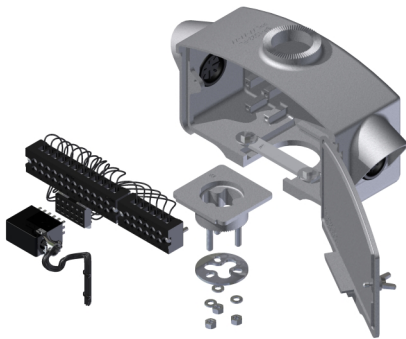
SP-1021-FL -1 - Coating
PNC=Process No Color
P__=Paint



**Disconnect Hanger Assy,
12 Circuit Terminal Block &
2" Non-Threaded Top, Alum**

APL Certification #659-004-018

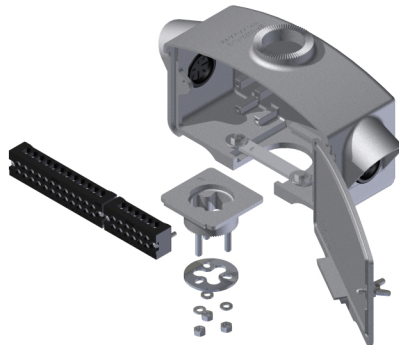
SP-1021-FL -2 - Coating
PNC=Process No Color
P__=Paint



**Disconnect Hanger Assy,
18 Circuit w/ 4' Harness &
2" Non-Threaded Top, Alum**

APL Certification #659-004-019

SP-1022-FL -1 - Coating
PNC=Process No Color
P__=Paint



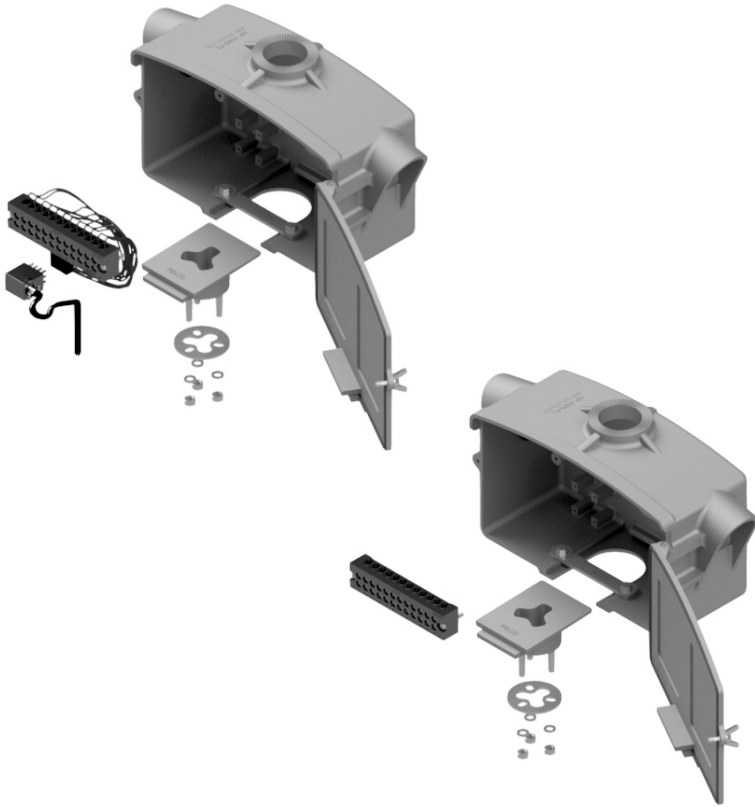
**Disconnect Hanger Assy,
18 Circuit w/ Terminal Block &
2" Non-Threaded Top, Alum**

APL Certification #659-004-019

SP-1022-FL -2 - Coating
PNC=Process No Color
P__=Paint

- Note: 1. Internal disconnect body dimensions are 10-1/2" wide x 4-1/2" high x 3-1/2" deep.
2. All assemblies are supplied standard with stainless steel fasteners and slotted washers where applicable.
3. See page ii for available paint colors.





**Disconnect Hanger Assy, Large
12 Circuit w/ 4' Harness &
2" Non-Threaded Top, Alum**

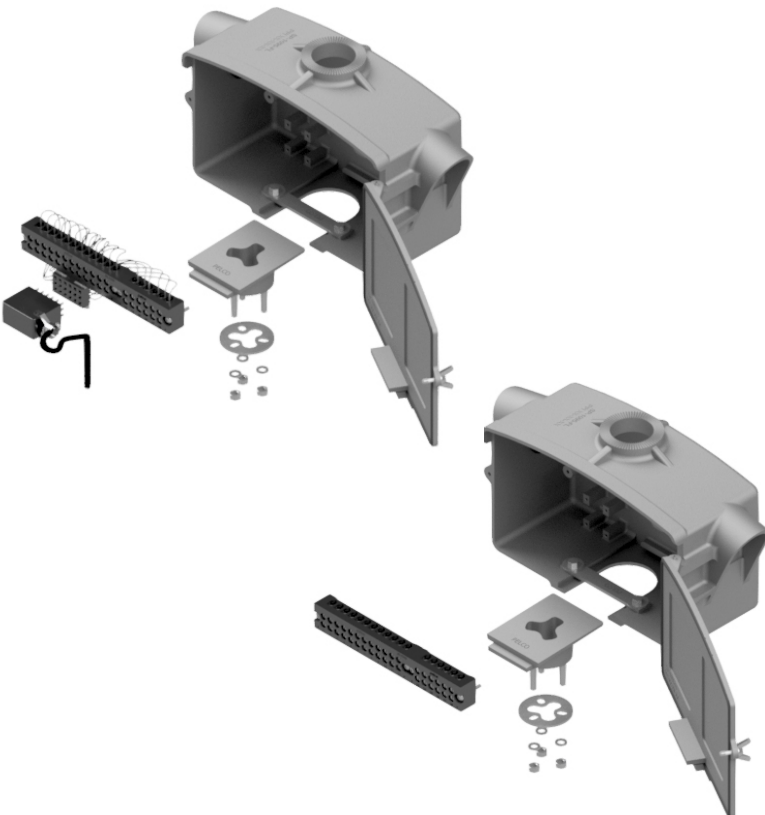
APL Certification #659-004-026

SP-1095-FL -1 -12- Coating
PNC=Process No Color
P__=Paint

**Disconnect Hanger Assy, Large
12 Circuit Terminal Block &
2" Non-Threaded Top, Alum**

APL Certification #659-004-026

SP-1095-FL -2 -12- Coating
PNC=Process No Color
P__=Paint



**Disconnect Hanger Assy, Large
18 Circuit w/ 4' Harness &
2" Non-Threaded Top, Alum**

APL Certification #659-004-026

SP-1095-FL -1 -18- Coating
PNC=Process No Color
P__=Paint

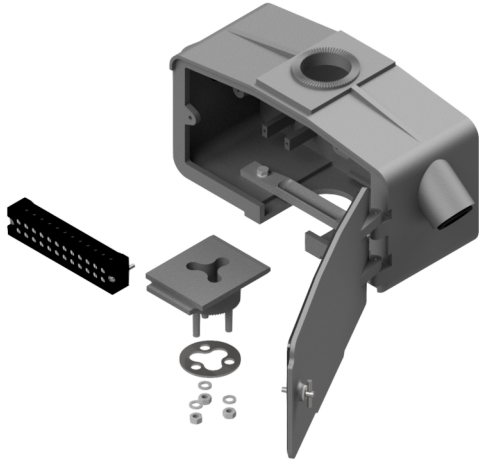
**Disconnect Hanger Assy, Large
18 Circuit w/ Terminal Block &
2" Non-Threaded Top, Alum**

APL Certification #659-004-026

SP-1095-FL -2 -18- Coating
PNC=Process No Color
P__=Paint

- Note: 1. Internal disconnect body dimensions are 11-5/8" wide x 6-1/2" high x 5" deep.
2. All assemblies are supplied standard with stainless steel fasteners and slotted washers where applicable.
3. See page ii for available paint colors.



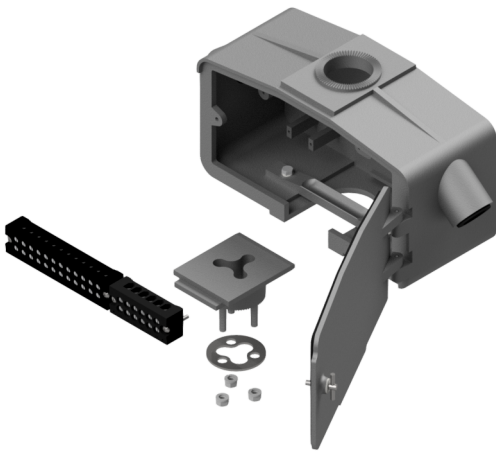


Disconnect Hanger Assy, Large 12 Circuit w/ Terminal Block & 2" Non-Threaded Top, Alum

APL Certification #659-004-006

EC-1150 -12 - T -

Coating
PNC=Process No Color
P_ =Paint



Disconnect Hanger Assy, Large 18 Circuit w/ Terminal Block & 2" Non-Threaded Top, Alum

APL Certification #659-004-007

EC-1150 -18 - T -

Coating
PNC=Process No Color
P_ =Paint

- Note: 1. Internal disconnect body dimensions are 11-3/4" wide x 6" high x 4-3/8" deep.
2. All assemblies are supplied standard with stainless steel fasteners and slotted washers where applicable.
3. See page ii for available paint colors.



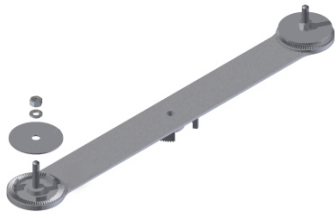
Free-Swinging



Upper Arm Assy, 2-Way Tri-Stud 17" CTC, Alum

APL Certification #659-001-030

SP-1026-FL - Coating
PNC=Process No Color
P__=Paint



Lower Arm Assy, 2-Way Single-Stud 17" CTC, Alum

APL Certification #659-001-031

SP-1027-FL - Coating
PNC=Process No Color
P__=Paint

Note: 1. All assemblies are supplied standard with stainless steel fasteners, slotted washers, and cables where applicable.
2. See page ii for available paint colors.





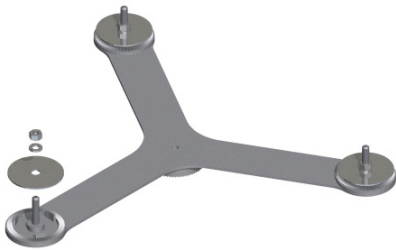
Upper Arm Assy, 3-Way Tri-Stud Alum

APL Certification #659-001-036

SP-1015-FL -

Coating

PNC=Process No Color
P__=Paint



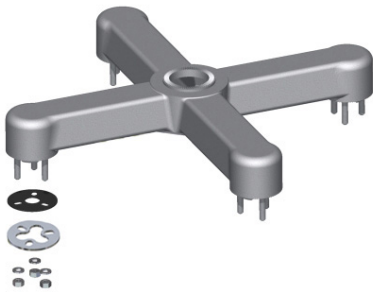
Lower Arm Assy, 3-Way Single-Stud Alum

APL Certification #659-001-034

SP-1016-FL -

Coating

PNC=Process No Color
P__=Paint



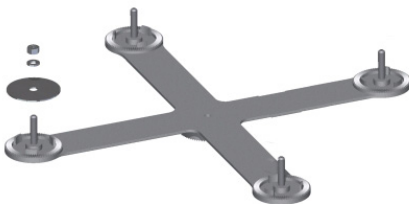
Upper Arm Assy, 4-Way Tri-Stud 17" CTC, Alum

APL Certification #659-001-037

SP-1017-FL -

Coating

PNC=Process No Color
P__=Paint



Lower Arm Assy, 4-Way Single-Stud 17" CTC, Alum

APL Certification #659-001-035

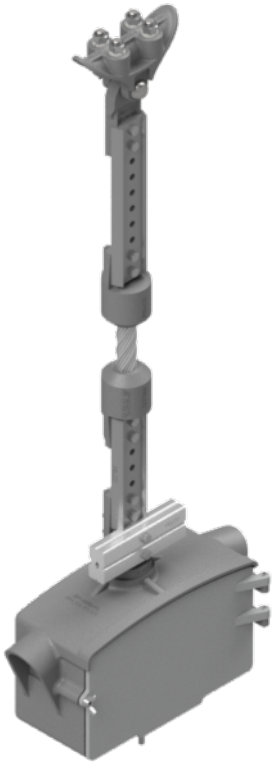
SP-1018-FL -

Coating

PNC=Process No Color
P__=Paint

Note: 1. All assemblies are supplied standard with stainless steel fasteners, slotted washers, and cables where applicable.
2. See page ii for available paint colors.





Disconnect Hanger Assy w/ Cable Dampener & Signal Support, Alum

APL Certification #659-037-004

SP-1112-FL - - -
 Wiring Circuit Coating
 1=w/ Wiring Harness 12=12 Circuit PNC=Process No Color
 2=w/o Wiring Harness 18=18 Circuit P_ =Paint

| Hanger Assy | Disconnect Box | Description |
|-----------------|-----------------|-------------------------------|
| SP-1112-FL-1-12 | SP-1095-FL-1-12 | 12-Circuit w/ Wiring Harness |
| SP-1112-FL-1-18 | SP-1095-FL-1-18 | 18-Circuit w/ Wiring Harness |
| SP-1112-FL-2-12 | SP-1095-FL-2-12 | 12-Circuit w/o Wiring Harness |
| SP-1112-FL-2-18 | SP-1095-FL-2-18 | 18-Circuit w/o Wiring Harness |

Note: 1. All assemblies are supplied standard with stainless steel fasteners, slotted washers, and cables where applicable.
 2. See page ii for available paint colors.





Upper Arm Assy, 1-Way Tri-Stud, Alum

APL Certification #653-001-004

SP-1011-FL -

Coating

PNC=Process No Color

P__=Paint



Lower Arm Assy, 1-Way Tri-Stud, Alum

APL Certification #653-001-003

SP-1012-FL -

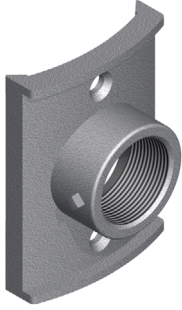
Coating

PNC=Process No Color

P__=Paint

Note: 1. All assemblies are supplied standard with stainless steel fasteners, slotted washers, and cables where applicable.
2. See page ii for available paint colors.





Hub Plate, Large Pole, 1-1/2" NPS, Alum

APL Certification not required for this product

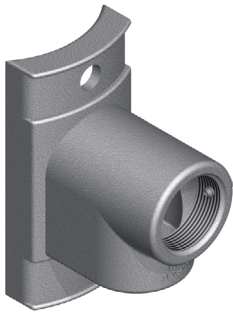
SE-0357 - -
 Set Screw Coating
 DS=Double PNC=Process No Color
 Set Screws P__=Paint



Hub Plate, Single, 1-1/2" NPS, Alum

APL Certification not required for this product

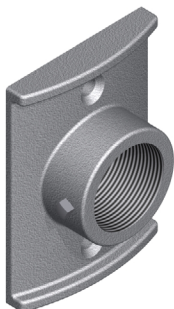
SE-0111 - - -
 Mounting Set Screw Coating
 0.563=9/16" DS=Double PNC=Process No Color
 Mounting Hole Set Screws P__=Paint



Hub Plate, Extended 1-1/2" NPS, Alum

APL Certification not required for this product

SE-0381 - -
 Mounting Coating
 0.75=3/4" PNC=Process No Color
 Mounting Hole P__=Paint



Hub Plate, Flat Back, 1-1/2" NPS, Alum

APL Certification not required for this product

SE-0415 - -
 DS=Double Coating
 Set Screws PNC=Process No Color
 P__=Paint

Note: 1. All assemblies are supplied standard with stainless steel fasteners, slotted washers, and cables where applicable.
 2. See page ii for available paint colors.





Slip Fitter Assy, 1-Way Tri-Stud, Alum

APL Certification not required for this product

SP-1034-FL -

Coating

PNC=Process No Color
P__=Paint



Slip Fitter, 1-Way, Alum

APL Certification not required for this product

SE-3106 -

Coating

PNC=Process No Color
P__=Paint



Slip Fitter Assy, 1 & 2-Way, Alum

APL Certification not required for this product

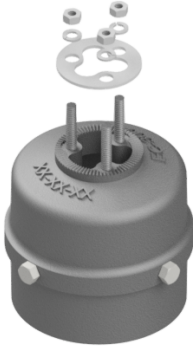
SE-3002 -

Coating

PNC=Process No Color
P__=Paint

Note: 1. All assemblies are supplied standard with stainless steel fasteners, slotted washers, and cables where applicable.
2. See page ii for available paint colors.





Slip Fitter Assy, 1-Way Tri-Stud, Alum

APL Certification not required for this product

EC-3004-T -

Coating

PNC=Process No Color

P__=Paint



Mounting Kit for Concrete Pedestal, Alum

APL Certification not required for this product

SP-1033-FL -

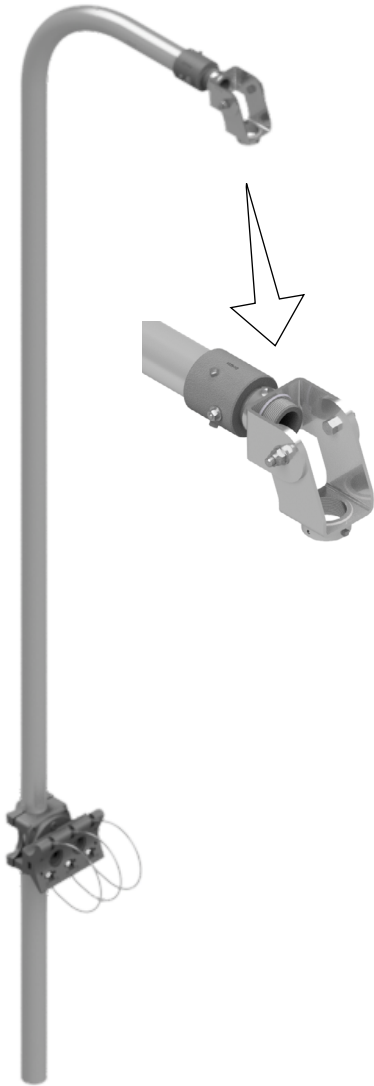
Coating

PNC=Process No Color

P__=Paint

Note: 1. All assemblies are supplied standard with stainless steel fasteners, slotted washers, and cables where applicable.
2. See page ii for available paint colors.



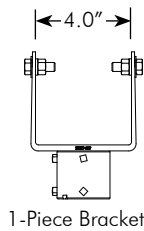
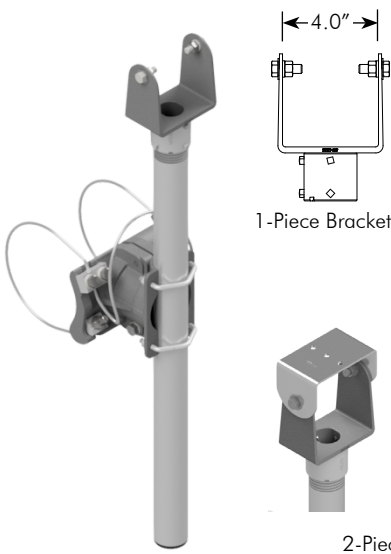
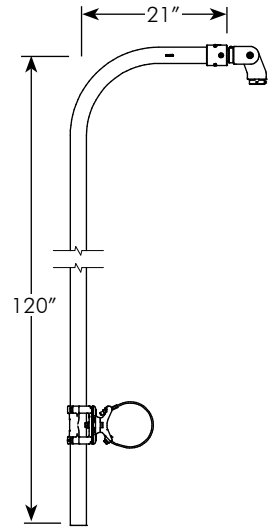


Camera Bracket, Astro-Brac Triton Mnt w/ 2" Sch 40 x 120" Bent Tube, Stainless Cable, Alum

APL Certification #659-035-004

SP-1114-FL - -
 Cable Length Coating
 See Table PNC=Process No Color
 P__=Paint

| | | | |
|-------------------|-------|-------|-------|
| Cable Length: | 45" | 62" | 84" |
| Maximum Pole Dia: | 11.1" | 16.6" | 22.0" |

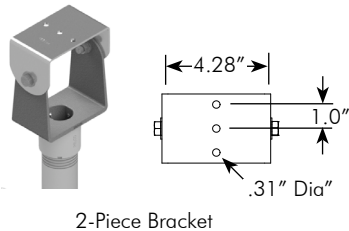


Camera Bracket, Adjustable Stellar Mount, Stainless Cable, Alum

APL Certification #659-035-005

SP-1106-FL - - - -
 Camera Mount Tube Length Cable Length Coating
 1PC=1 Piece 23=23" See Table PNC=Process No Color
 2PC=2 Piece 37=37" P__=Paint
 46=46"
 58=58"
 74=74"

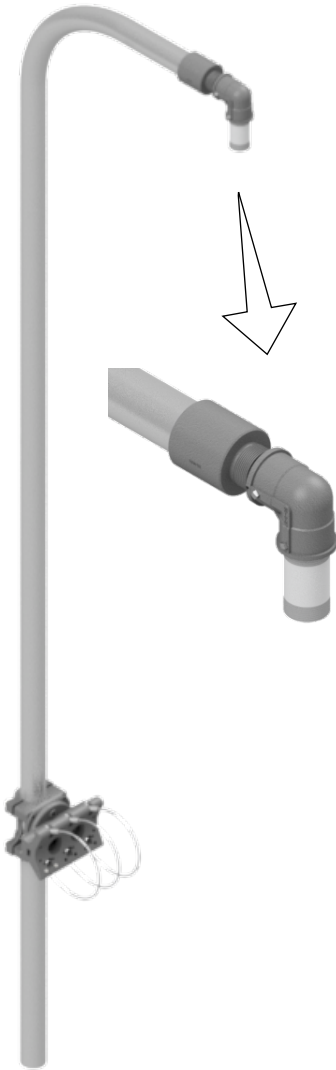
| | | | | | | | |
|-------------------|------|-------|-------|-------|-------|-------|-------|
| Cable Length: | 62" | 84" | 96" | 120" | 144" | 220" | 280" |
| Maximum Pole Dia: | 7.0" | 10.5" | 12.4" | 16.2" | 20.1" | 32.2" | 35.0" |



- Note: 1. All assemblies are supplied standard with stainless steel fasteners, slotted washers, and cables where applicable.
 2. See page iii for additional cable length and pole diameter information.
 3. See page ii for available paint colors.



Camera Mounts

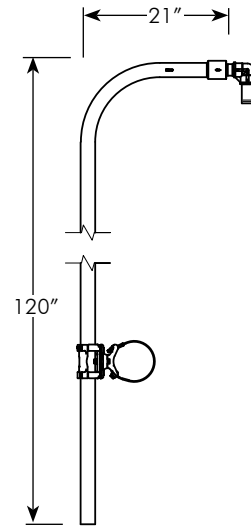


Camera Bracket, Astro-Brac Triton Mnt Watertight w/ 2" Sch 40 x 120" Bent Tube, Stainless Cable, Alum

APL Certification #659-035-009

SP-1129-FL - -
 Cable Length Coating
 See Table PNC=Process No Color
 P__=Paint

| | | | |
|-------------------|-------|-------|-------|
| Cable Length: | 45" | 62" | 84" |
| Maximum Pole Dia: | 11.1" | 16.6" | 22.0" |



- Note: 1. All assemblies are supplied standard with stainless steel fasteners, slotted washers, and cables where applicable.
 2. See page iii for additional cable length and pole diameter information.
 3. See page ii for available paint colors.



FLORIDA





Sign Bracket, Mast Arm Free-Swinging w/ Cable Dampener Stainless Cable Mini-Brac Mount, Alum

APL Certification #659-011-031

SP-1072-FL - -
 Cable Length Coating
 See Table PNC=Process No Color
 P__=Paint

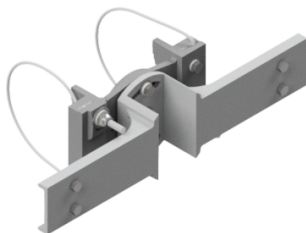
| | | | |
|-------------------|-------|-------|-------|
| Cable Length: | 45" | 62" | 84" |
| Maximum Pole Dia: | 11.1" | 16.6" | 22.0" |



Sign Bracket, Mast Arm Free-Swinging w/ Cable Dampener Large Hub Mount, Alum

APL Certification #659-034-002

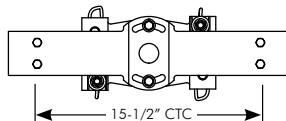
SP-1074-FL -
 Coating
 PNC=Process No Color
 P__=Paint



Sign Mount, Master Bracket, Alum 15-1/2" CTC, Stainless Cable

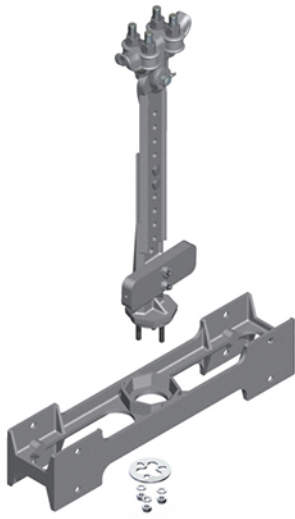
APL Certification #659-011-013

EC-3075-SB - -
 Cable Length Coating
 80=80" PNC=Process No Color
 120=120" P__=Paint



- Note: 1. All assemblies are supplied standard with stainless steel fasteners, slotted washers, and cables where applicable.
 2. See page iii for additional cable length and pole diameter information.
 3. See page ii for available paint colors.





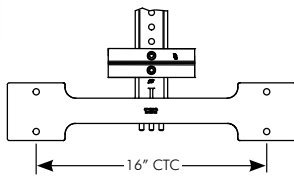
Sign Hanger Assy, Adjustable Double 16" CTC w/ Iron Span Wire Clamp, Alum

APL Certification #659-011-020

SP-1031-FL -

Coating

PNC=Process No Color
P__=Paint



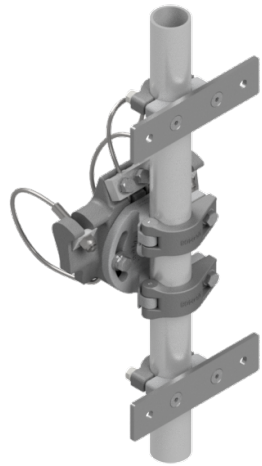
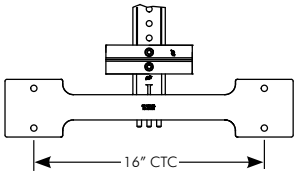
Sign Hanger Assy, Adjustable Single 16" CTC w/ Iron Span Wire Clamp, Alum

APL Certification #659-011-021

SP-1032-FL -

Coating

PNC=Process No Color
P__=Paint



Sign Bracket Assy for Rigid Structure Galaxy Stainless Cable, Alum

APL Certification #659-011-0321

SP-1140-FL - - - -

Tube

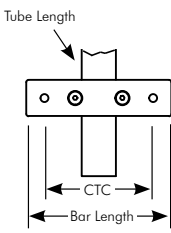
Sign Bar

Cable Length

Coating

18=18" 08=8" w/ 6" CTC See Table
24=24" 16=16" w/ 9.75" CTC
30=30"
36=36"
42=42"

PNC=Process No Color
P__=Paint



| | | | | | | | |
|-------------------|------|-------|-------|-------|-------|-------|-------|
| Cable Length: | 62" | 84" | 96" | 120" | 144" | 220" | 280" |
| Maximum Pole Dia: | 7.0" | 10.5" | 12.4" | 16.2" | 20.1" | 32.2" | 35.0" |

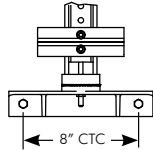
Note: 1. All assemblies are supplied standard with stainless steel fasteners, slotted washers, and cables where applicable.
2. See page ii for available paint colors.





Sign Hanger Assy, Adjustable Span Wire 10" Blade, 8" CTC w/ Tether, Alum

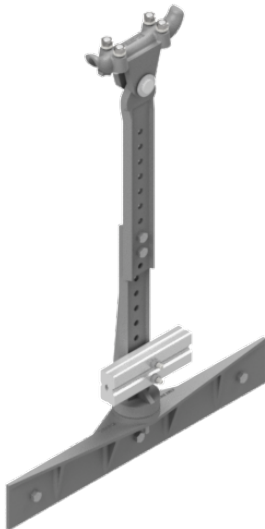
APL Certification #659-011-001



EC-2094 -

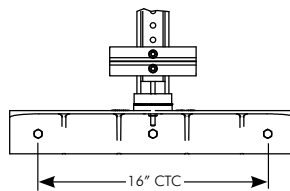
Coating

PNC=Process No Color
P__=Paint



Sign Hanger Assy, Adjustable Span Wire 20" Blade, 16" CTC w/ Tether, Alum

APL Certification #659-011-001



EC-2094-XL -

Coating

PNC=Process No Color
P__=Paint

Note: 1. All assemblies are supplied standard with stainless steel fasteners, slotted washers, and cables where applicable.
2. See page ii for available paint colors.

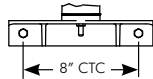


Sign Mounts

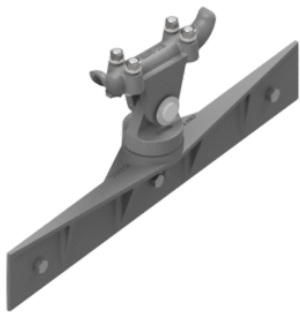


Sign Hanger Assy, Span Wire 10" Blade, 8" CTC, Alum

APL Certification #659-011-001

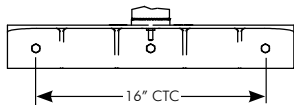


EC-2093 - Coating
 PNC=Process No Color
 P__=Paint



Sign Hanger Assy, Span Wire 20" Blade, 16" CTC, Alum

APL Certification #659-011-001



EC-2093-XL - Coating
 PNC=Process No Color
 P__=Paint

Note: 1. All assemblies are supplied standard with stainless steel fasteners, slotted washers, and cables where applicable.
 2. See page ii for available paint colors.



FLORIDA



The IntelliCross APS is the state-of-the-art solution for solving pedestrian traffic challenges. The IntelliCross turns a pre-timed pedestrian intersection into a fully actuated intersection. Pre-loaded or custom audio messages with remote or local configuration access are only two of the many key features of Pelco's intelligent pedestrian system. Contact Pelco for additional information.

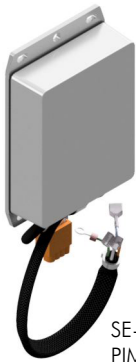
FLORIDA



APS Assy, IntelliCross w/ Single Arrow, for 5" x 7-3/4" Sign, Alum

APL Certification #665-004-009

SP-1115-FL - -
 Configuration Coating
 S=Standard PNC=Process No Color
 C=Custom P__=Paint

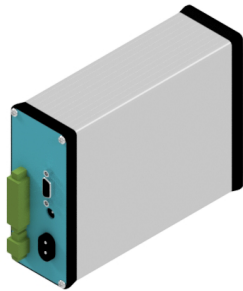


SE-6190 PIM

Note:
 PIM - Power Interface Module included.
 Pedestrian signs, sign adapters, and double arrow kits sold separately.

CIU, Communication Interface Unit, Compact for APS IntelliCross Button

APL Certification #665-004-009



SE-6172-FL-PNC

Note:
 CIU is optional. Only required for advanced features.

Note: 1. All assemblies are supplied standard with stainless steel fasteners, slotted washers, and cables where applicable.
 2. See page ii for available paint colors.

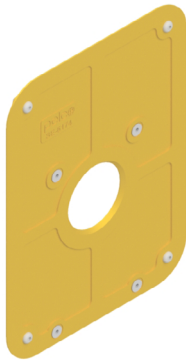




Adapter Assy, 9" x 15", w/ Hardware IntelliCross, Alum

APL Certification #665-004-009

SE-2174 - Coating
PNC=Process No Color
P__=Paint



Adapter Assy, 9" x 12", w/ Hardware IntelliCross, Alum

APL Certification #665-004-009

SE-2171 - Coating
PNC=Process No Color
P__=Paint



Adapter Assy, 9" x 3", w/ Hardware IntelliCross, Alum

APL Certification #665-004-009

SE-2175 - Coating
PNC=Process No Color
P__=Paint



Arrow, Double for APS IntelliCross Push Button, w/ Hardware, Alum

APL Certification #665-004-009

SE-6170-2 - Coating
P__=Paint

Note: 1. All assemblies are supplied standard with stainless steel fasteners, slotted washers, and cables where applicable.
2. See page ii for available paint colors.





Push Button Assy, Passport Pole Mount, Alum 2-Hole Cover Mount Piezo Switch w/ LED

APL Certification #665-003-015

SP-1111-FL - Arrow - Latching - Coating
 Blank=None Blank=Non Latching PNC=Process No Color
 1=Single LCH=Latching P__=Paint
 2=Double



1-Way Arrow

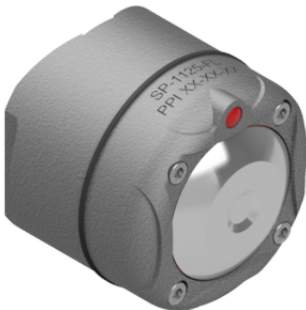


2-Way Arrow

Note:
Latching option requires SP-1124-FL Controller Assy.



Pole Mount



Push Button Assy, Passport Pole Mount, Alum 4-Hole Cover Mount Piezo Switch w/ LED

APL Certification #665-003-015

SP-1125-FL - Arrow - Latching - Coating
 Blank=None Blank=Non Latching PNC=Process No Color
 1=Single LCH=Latching P__=Paint
 2=Double

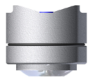


1-Way Arrow



2-Way Arrow

Note:
Latching option requires SP-1124-FL Controller Assy.



Pole Mount



Push Button Assy, Passport Pole Mount, Alum 2-Hole Cover Mount Piezo Switch without LED

APL Certification #665-003-015

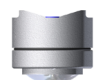
SP-1117-FL - Arrow - Coating
 Blank=None PNC=Process No Color
 1=Single P__=Paint
 2=Double



1-Way Arrow



2-Way Arrow



Pole Mount

Note: 1. All assemblies are supplied standard with stainless steel fasteners, slotted washers, and cables where applicable.
 2. Latching units are latched on during the "Don't Walk" cycle with the addition of the SP-1124-FL controller.
 2. See page ii for available paint colors.



Latching Controller Assembly

The Pelco Latching Push Button Assembly provides visual confirmation to the pedestrian that a pedestrian call has been placed. An LED located on the Pedestrian Push Button illuminates when pressed, and stays illuminated until the "Walk Signal" is energized by the Traffic Controller. The Latching Push Button Controller also provides electrical isolation between the Push Buttons and Controller.



Controller Assy, Latching Push Button, Alum

APL Certification #665-003-015

SP-1124-FL-PNC

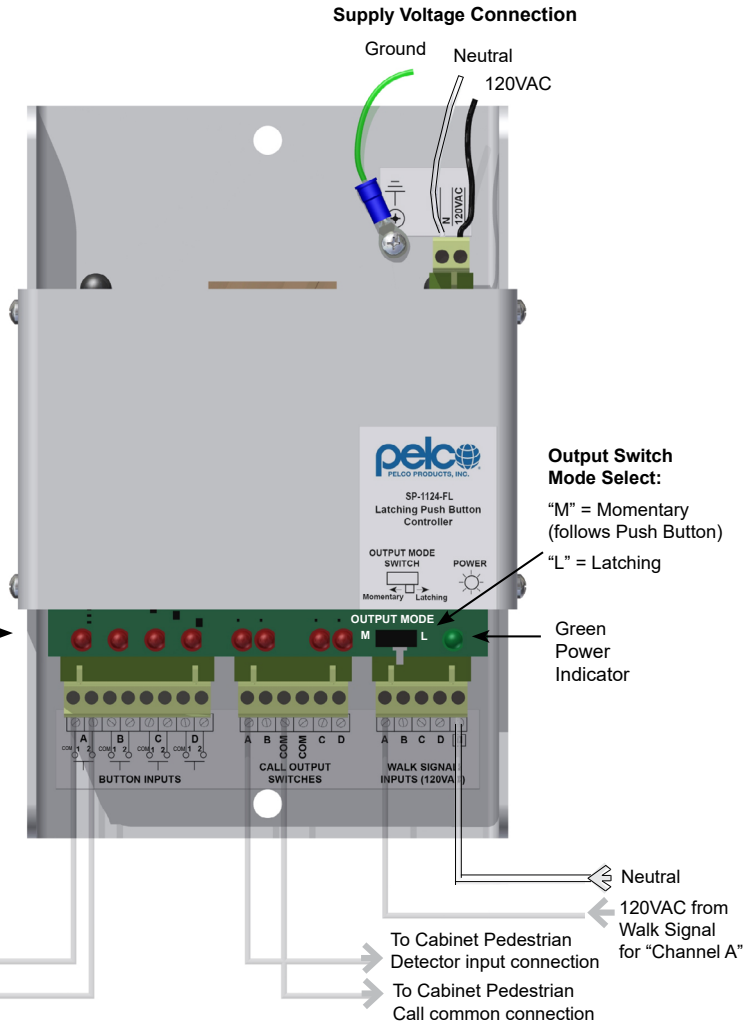
Note: Max 4 Push Buttons per Channel
Each push button channel requires two separate wires.
Common wire can not be shared between channels.

When used with Pelco's latching LED push buttons, and a pedestrian pushes a push button during the don't walk interval, the LED on all push buttons wired to that channel will come on, providing a continuous confirmation that a call has been placed to the traffic signal controller. When the walk signal comes on, the LED indication on all push buttons hooked up to that particular channel will go off.

Red LED indicators to show the state of each channel input and output:

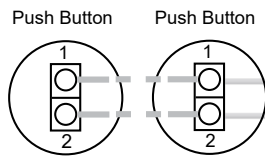
For the button inputs, the channel is latched when the LED is on. While the push button is being pressed, these LEDs will flash until the push button is released, and then they will stay on.

The call output switch indicator LEDs will turn on while the call output switch is "closed" and placing a call to the traffic controller. Whether these output switches latch on or follow the push button press is controlled by the output mode switch.



Channel A shown here for example:

*Proper wire polarity **MUST** be observed
#1-COM from LPBC to #1 on push button
#2 from LPBC to #2 on push button



*Max 4 Push Buttons per Channel
*Only wires connected to terminal 1-COM of BUTTON INPUTS can be shared between channels.

Note: 1. Refer to previous page of this catalog section for LED push buttons or stations -LCH latching option.
2. Each channel of the 4 channel latching controller can operate up to 4 push buttons for a total of 16 push buttons per controller Assembly.



FLORIDA



Push Button Assy, Mechanical Pole Mount

APL Certification #665-003-010



SP-1090-FL -

Coating

PNC=Process No Color

P_ _=Paint



Pole Mount

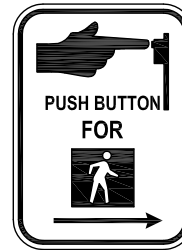
Note: 1. All assemblies are supplied standard with stainless steel fasteners, slotted washers, and cables where applicable.
2. See page ii for available paint colors.

Pedestrian Signs

Pedestrian Signs, MUTCD Compliant APL Certification #665-002-001



R10-2a



R10-3

SF-1085-

| | | | | |
|-----------|---|----------------|---|-----|
| Size | - | 3/8" Mtg Holes | - | PNC |
| 12=9"x12" | | Blank=None | | |
| | | 2H=2 Holes | | |
| | | 4H=4 Holes | | |

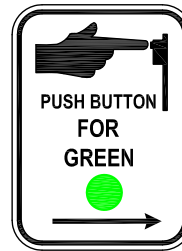
SF-1014-

| | | | | | | |
|-------------|---|-------------------------|---|----------------|---|-----|
| Size | - | Arrow | - | 3/8" Mtg Holes | - | PNC |
| 7=5"x7-3/4" | | R= Right Man/Arrow | | Blank=None | | |
| 12=9"x12" | | L= Left Man/Arrow | | 2H=2 Holes | | |
| | | D=Left Man/Double Arrow | | 4H=4 Holes | | |

Note: For double sided R10-3 sign order SF-1098.



R10-25



R10-4

SF-1083-

| | | | | |
|---------------|---|----------------|---|-----|
| Size | - | 3/8" Mtg Holes | - | PNC |
| 7=5" x 7-3/4" | | Blank=None | | |
| 12=9" x 12" | | 2H=2 Holes | | |
| | | 4H=4 Holes | | |

SF-1022-

| | | | | | | |
|-----------|---|-----------------|---|----------------|---|-----|
| Size | - | Arrow | - | 3/8" Mtg Holes | - | PNC |
| 12=9"x12" | | R= RightArrow | | Blank=None | | |
| | | L= Left Arrow | | 2H=2 Holes | | |
| | | D= Double Arrow | | 4H=4 Holes | | |



R10-3a



R10-4a

SF-1006-

| | | | | | | |
|-----------|---|--------------------|---|----------------|---|-----|
| Size | - | Arrow | - | 3/8" Mtg Holes | - | PNC |
| 15=9"x15" | | R= Right Man/Arrow | | Blank=None | | |
| | | L= Left Man/Arrow | | 2H=2 Holes | | |
| | | | | 4H=4 Holes | | |

SF-1027-

| | | | | | | |
|-----------|---|--------------------|---|----------------|---|-----|
| Size | - | Arrow | - | 3/8" Mtg Holes | - | PNC |
| 12=9"x15" | | R= Right Man/Arrow | | Blank=None | | |
| | | L= Left Man/Arrow | | 2H=2 Holes | | |
| | | | | 4H=4 Holes | | |

Note: 1. Standard signs are .063" aluminum with the exception of 9" x 15" signs, which are 0.080" thick.

2. Custom signs are non-compliant with MUTCD standards. Additional custom signs are available upon request.



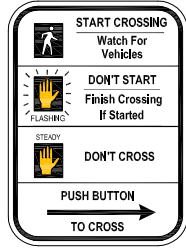
FLORIDA



Pedestrian Signs

Pedestrian Signs, MUTCD Compliant APL Certification #665-002-001

FLORIDA



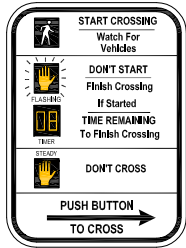
R10-3b

SF-1060- Size - Arrow - 3/8" Mtg Holes - PNC
 12=9"x12" R= Right Man/Arrow Blank=None
 L= Left Man/Arrow 2H=2 Holes
 4H=4 Holes



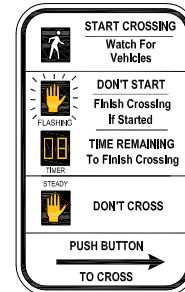
R10-3c

SF-1084- Size - Arrow - 3/8" Mtg Holes - PNC
 12=9"x12" R= Right Arrow Blank=None
 L= Left Arrow 2H=2 Holes
 4H=4 Holes



R10-3e

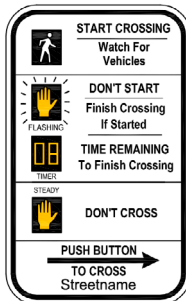
SF-1065- Size - Arrow - 3/8" Mtg Holes - PNC
 7=5" x 7-3/4" R= Right Arrow Blank=None
 12=9" x 12" L= Left Arrow 2H=2 Holes
 D= Double Arrow 4H=4 Holes



R10-3e

SF-1074- Size - Arrow - 3/8" Mtg Holes - PNC
 15=9"x15" R= Right Arrow Blank=None
 L= Left Arrow 2H=2 Holes
 D= Double Arrow 4H=4 Holes

Note: For double sided R10-3e sign order SF-1099.



R10-3i

SF-1100- Size - Arrow - 3/8" Mtg Holes - Streetname - PNC
 15=9" x 15" R= Right Arrow Blank=None Specify
 L= Left Arrow 2H=2 Holes Street Name
 D= Double Arrow 4H=4 Holes Required

| Sign Size | -2H = 2 Holes 3/8" Dia | -4H = 4 Holes 3/8" Dia |
|-------------|------------------------|------------------------|
| 5" x 7-3/4" | 6.25" CTC | 4" x 6.75" CTC |
| 9" x 12" | 10" CTC | 7" x 10" CTC |
| 9" x 15" | 13" CTC | 7" x 13" CTC |

Note: Streetname sign to be printed is required when ordering.

Note: 1. Standard signs are .063" aluminum with the exception of 9" x 15" signs, which are 0.080" thick.
 2. Custom signs are non-compliant with MUTCD standards. Additional custom signs are available upon request.



This page is intentionally left blank.

FLORIDA

pelco
PELCO PRODUCTS, INC.



Pedestal Bases & Poles

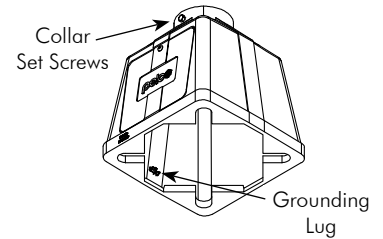
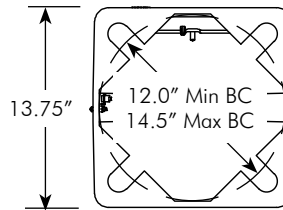
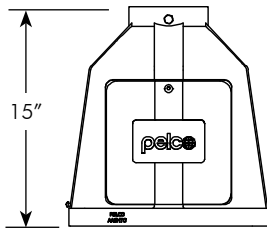
Base Assy, Square w/ Plastic Door

APL Certification #646-001-001



SP-1116-FL - Door - Grounding Lug - Coating

NL=No Logo Blank=None PNC=Process No Color
 Blank=Pelco Logo GL=Grounding Lug P_=_Paint



Anchor Bolt Kit, 3/4"-10NC x 18" w/ 4 Flat Washers & 8 Hex Nuts Domestic w/ Certs, Galv

PB-5543-GLV



Note: 1. All assemblies are supplied standard with stainless steel fasteners, slotted washers, and cables where applicable.
 2. See page ii for available paint colors.



Pedestal Bases & Poles



Pole Cap Assy, Acorn, Alum

APL Certification #746-001-009

PB-5401 - Coating
PNC=Process No Color
P__=Paint



Pedestal Pole, 4"-8 NPT Sch 40, Spun Alum

APL Certification #746-001-008

PB-5100 - Length - Coating
PNC=Process No Color
P__=Paint



Collar Assy, Square Base, Alum

APL Certification not required for this product

PB-5325 - Coating
PNC=Process No Color
P__=Paint



Grounding Lug w/ Mounting Hardware

APL Certification not required for this product

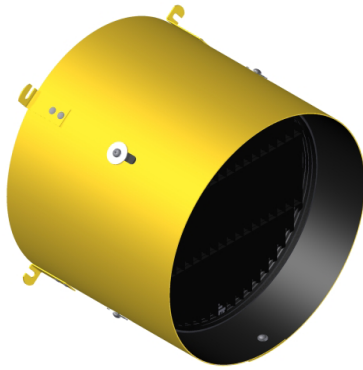
PB-5363-PNC

Note: 1. All assemblies are supplied standard with stainless steel fasteners, slotted washers, and cables where applicable.
2. See page ii for available paint colors.



FLORIDA

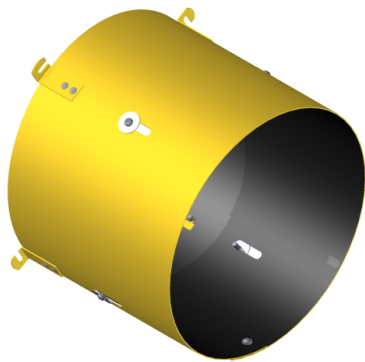
pelco
PELCO PRODUCTS, INC.



**GPL, 7 Degree View Angle
Geometrically Programmed Louver,
12" w/ Visor w/ Universal Clips**

APL Certification #650-024-001

GL-1010 - 07 - UC -
Coating
P__=Paint



**Visor, Full Circle w/Slots for 12" Signal
w/ Universal Clips**

APL Certification #650-023-001

SM-1028-UC -
Coating
P__=Paint

Note: 1. All assemblies are supplied standard with stainless steel fasteners, slotted washers, and cables where applicable.
2. See page ii for available paint colors.



This page is intentionally left blank.

FLORIDA

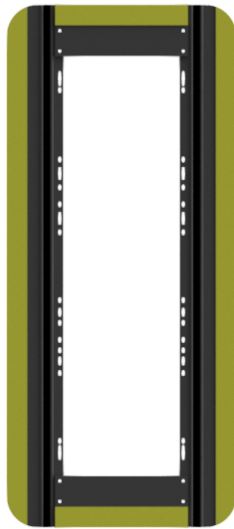
pelco
PELCO PRODUCTS, INC.

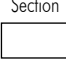



AeroFlex Backplate

AeroFlex Universal Straight Backplates, Dual Durometer PVC

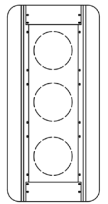
APL Certification #650-022-005



BK-8000 -  -  - FL - PNC

1=1-Sec
2=2-Sec
3=3-Sec
4=4-Sec
5=5-Sec

RT2= 2" Reflective Tape
RT3= 3" Reflective Tape



BK-8000-3-RT2-FL-PNC
12", 3-Section Universal
w/ 2" Reflective Tape
EXAMPLE

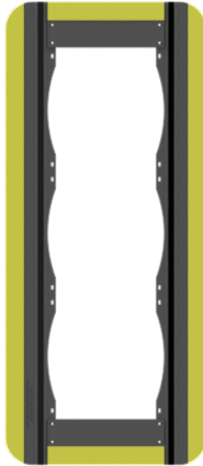
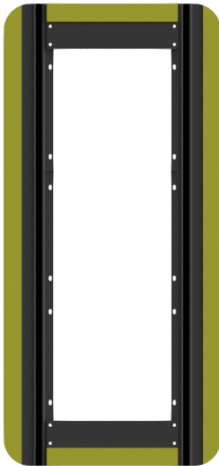
Notes:

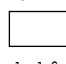

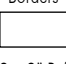
1. Universal AeroFlex backplates will fit Peek, McCain, Mark IV, Econolite, Eagle SA, and North American signals.
2. The Universal AeroFlex backplate will not fit Eagle SG bubbleback signals. See BK-8100 EagleSG AeroFlex Backplates.

| Signal Size | Signal Height | Manufacturer |
|-------------|---------------|----------------|
| 12" | 13-1/2" | Peek |
| 12" | 13-1/2" | McCain |
| 12" | 13-1/2" | Mark IV |
| 12" | 14" | Econolite |
| 12" | 14" | Eagle SA |
| 12" | 14" | North American |

AeroFlex Signal Specific Straight Backplates, Dual Durometer PVC

APL Certification #650-022-005

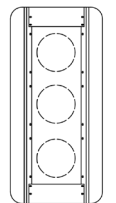


BK-8100 -  -  -  - FL - PNC

1=1-Sec
2=2-Sec
3=3-Sec
4=4-Sec
5=5-Sec

McCain=McCain
EagleSG=Eagle SG
PeekTCT=Peek/TCT

RT2= 2" Reflective Tape
RT3= 3" Reflective Tape



BK-8100-3-McCain-RT2-FL-PNC
12", 3-Section McCain
w/ 2" Reflective Tape
EXAMPLE

BK-8100-3-EagleSG-RT2-FL-PNC
12", 3-Section Eagle SG
w/ 2" Reflective Tape
EXAMPLE

Note: Designed to fit specific signal manufacturers.

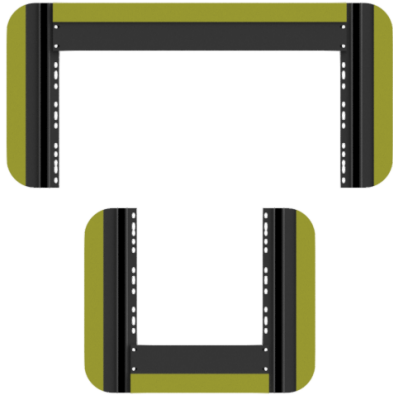
Note: 1. All assemblies are supplied standard with stainless steel fasteners, slotted washers, and cables where applicable.



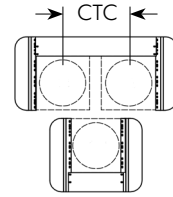
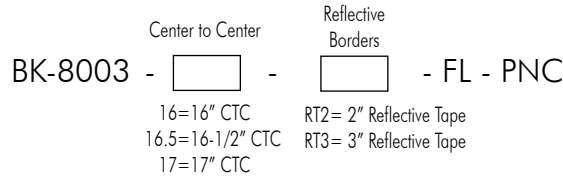
AeroFlex Backplate

AeroFlex Universal 3-Section Cluster Hawk Backplates, Dual Durometer PVC

APL Certification #650-022-005



BK-8003-16-RT2-FL-PNC
12", 3-Section Cluster Hawk, 16" CTC
w/ 2" Reflective Tape
EXAMPLE



Notes:

1. Universal AeroFlex backplates will fit Peek, McCain, Mark IV, Econolite, Eagle SA, and North American signals.
2. The Universal AeroFlex backplate will not fit Eagle SG bubbleback signals. See BK-8100 EagleSG AeroFlex Backplates.

| Signal Size | Signal Height | Manufacturer |
|-------------|---------------|----------------|
| 12" | 13-1/2" | Peek |
| 12" | 13-1/2" | McCain |
| 12" | 13-1/2" | Mark IV |
| 12" | 14" | Econolite |
| 12" | 14" | Eagle SA |
| 12" | 14" | North American |

FLORIDA

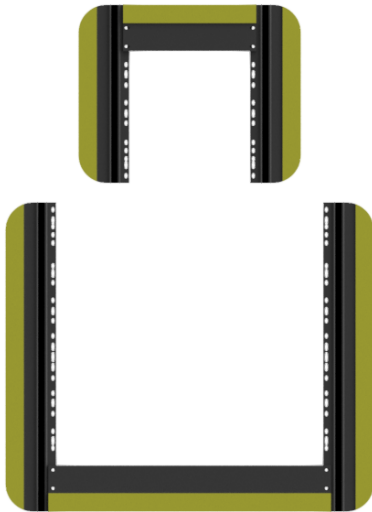


Note: 1. All assemblies are supplied standard with stainless steel fasteners, slotted washers, and cables where applicable.



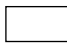

AeroFlex Universal 4 or 5-Section Cluster Backplates, Dual Durometer PVC

APL Certification #650-022-005

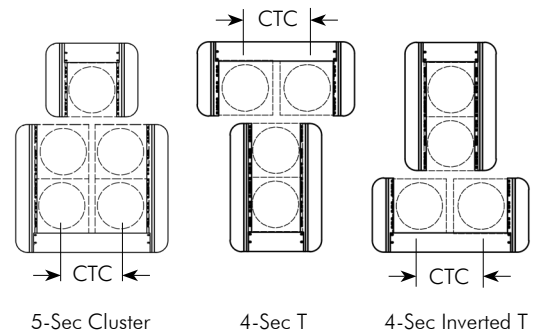


BK-8005-16-RT2-FL-PNC
12", 5-Section Cluster, 16" CTC
w/ 2" Reflective Tape
EXAMPLE

Center to Center Reflective Borders

BK-8005 -  -  - FL - PNC

16=16" CTC RT2= 2" Reflective Tape
16.5=16-1/2" CTC RT3= 3" Reflective Tape
17=17" CTC



Notes:

1. Universal AeroFlex backplates will fit Peek, McCain, Mark IV, Econolite, Eagle SA, and North American signals.
2. The Universal AeroFlex backplate will not fit Eagle SG bubbleback signals. See BK-8105 EagleSG AeroFlex Backplates.
3. BK-8005 AeroFlex backplates can be configured for 5-Sec Cluster, 4-Sec T, or 4-Sec Inverted T signal mounts.

| Signal Size | Signal Height | Manufacturer |
|-------------|---------------|----------------|
| 12" | 13-1/2" | Peek |
| 12" | 13-1/2" | McCain |
| 12" | 13-1/2" | Mark IV |
| 12" | 14" | Econolite |
| 12" | 14" | Eagle SA |
| 12" | 14" | North American |

Note: 1. All assemblies are supplied standard with stainless steel fasteners, slotted washers, and cables where applicable.



AeroFlex Backplate

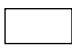
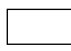
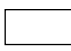
AeroFlex Signal Specific 4 or 5-Section Cluster Backplates, Dual Durometer PVC

APL Certification #650-022-005

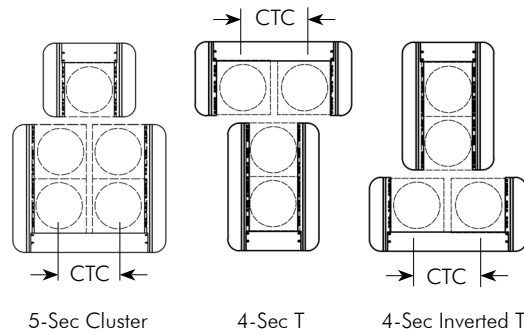


BK-8105-17-RT2-EagleSG-FL-PNC
12", 5-Section Cluster Eagle SG, 17" CTC
w/ 2" Reflective Tape
EXAMPLE

Center to Center Signal Manufacturer Reflective Borders

BK-8105 -  -  -  - FL - PNC

16=16" CTC EagleSG=Eagle SG Blank=No Tape
16.5=16-1/2" CTC McCain=McCain RT2= 2" Reflective Tape
17=17" CTC RT3= 3" Reflective Tape



Note: Designed to fit each specific manufacturers signal.

FLORIDA

pelco
PELCO PRODUCTS, INC.

