

Flasher Controllers

Aluminum Flasher Cabinets are weather resistant and are available for rear, top and bottom mounting. Various brackets are available for mounting to wood or metal poles. A complete line of Type II or Police Type cabinets are available.



Flasher Controller Assy w/ 5-Pin Flasher



SE-1000 - -

Mount	Coating
T=Top Mount	PNC=Process No Color
B=Bottom Mount	P__=Paint
R=Rear Mount	
TB=Top/Bottom Mount	
TBR=Top/Bottom & Rear Mount	
NM=No Mount	



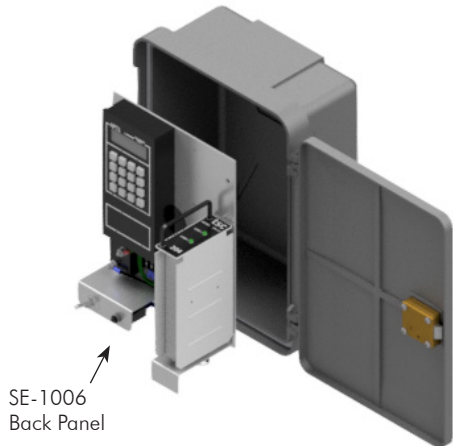
Top/Bottom Mount



Rear Mount

Note:
Includes Time Clock, Lightning Arrestor, Circuit Breaker & Toggle Switch.

Flasher Controller Assy w/ Nema Flasher



SE-1004 - -

Mount	Coating
T=Top Mount	PNC=Process No Color
B=Bottom Mount	P__=Paint
R=Rear Mount	
TB=Top/Bottom Mount	
TBR=Top/Bottom & Rear Mount	
NM=No Mount	



Top/Bottom Mount



Rear Mount

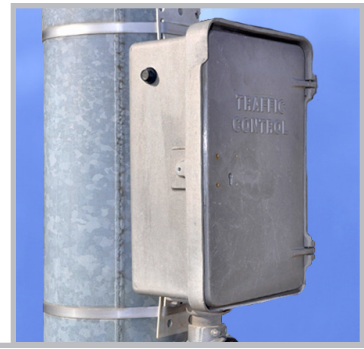
Note:
Includes Time Clock, Lightning Arrestor, Circuit Breaker & Toggle Switch.

Note: 1. All assemblies are supplied standard with stainless steel fasteners.
2. See Reference Section page v for available paint colors.



Flasher Controllers

Aluminum Flasher Cabinets are weather resistant and are available for rear, top and bottom mounting. Various brackets are available for mounting to wood or metal poles. A complete line of Type II or Police Type cabinets are available.

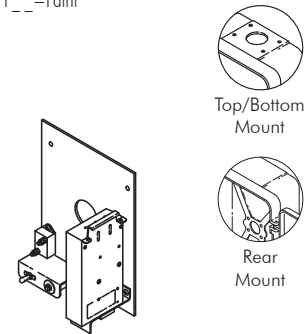


Flasher Controller Cabinet Assy w/o Time Clock, Alum



SE-1014 - - -

Mount	Flasher	Coating
T=Top Mount	Blank=None	PNC=Process No Color
B=Bottom Mount	F=Nema Flasher	P__=Paint
R=Rear Mount		
TB=Top/Bottom Mount		
TBR=Top/Bottom & Rear Mount		
NM=No Mount		



SE-1015, Backpanel with Flasher

Note:
Includes Lightning Arrestor, Circuit Breaker & Toggle Switch. Nema Flasher optional.

Flasher Cabinet Assy w/ Police Type Lock, Alum



SE-1002 - -

Mount	Coating
T=Top Mount	PNC=Process No Color
B=Bottom Mount	P__=Paint
R=Rear Mount	
TB=Top/Bottom Mount	
TBR=Top/Bottom & Rear Mount	
NM=No Mount	



Note: 1. All assemblies are supplied standard with stainless steel fasteners.
2. See Reference Section page v for available paint colors.



Mounting Assemblies

Aluminum Flasher Cabinets are weather resistant and are available for rear, top and bottom mounting. Various brackets are available for mounting to wood or metal poles. A complete line of Type II or Police Type cabinets are available.



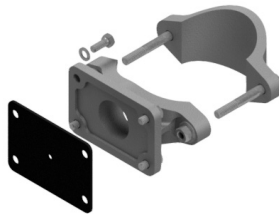
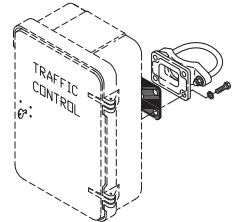
SE-2518-SS
Gasket & Hardware



SE-2517-SS
Hardware Kit

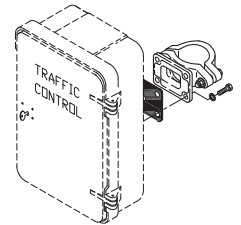
Mounting Kit, Alum for 4" (4-1/2" OD) Post

SE-1100 -
Coating
PNC=Process No Color
P__=Paint



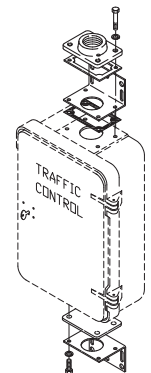
Mounting Kit, Alum For 3" (3-1/2" OD) Post

SE-1101 -
Coating
PNC=Process No Color
P__=Paint



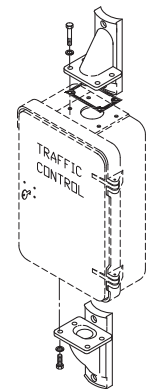
Mounting Kit, Alum For Wood Pole w/ 1-1/2" Single Hub & Closure Plate

SE-1103 -
Coating
PNC=Process No Color
P__=Paint



Mounting Kit, Alum Sweep Elbows

SE-1104 -
Coating
PNC=Process No Color
P__=Paint

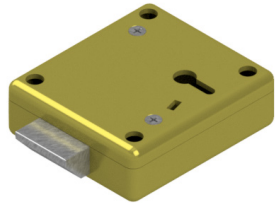
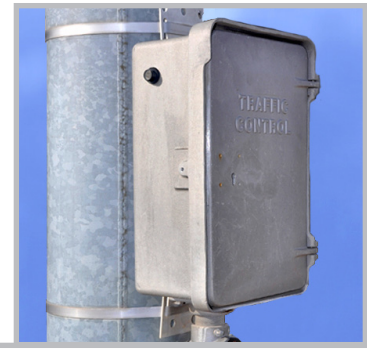


Note: 1. All assemblies are supplied standard with stainless steel fasteners.
2. See Reference Section page v or available paint colors.



Type I & Type IB Police Lock

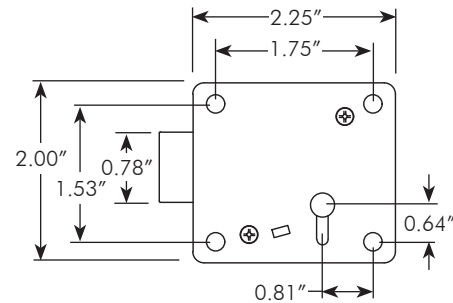
Aluminum Flasher Cabinets are weather resistant and are available for rear, top and bottom mounting. Various brackets are available for mounting to wood or metal poles. A complete line of Type II or Police Type cabinets are available.



Cabinet Lock, Police Type I

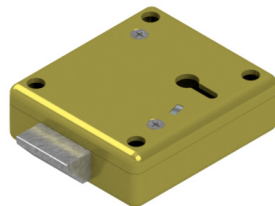
SM-1012 -  - BRS

- Keys
- OK=Lock Only
 - 1SK=Lock w/ 1 Short Key
 - 2SK=Lock w/ 2 Short Keys
 - 1LK=Lock w/ 1 Long Key
 - 2LK=Lock w/ 2 Long Keys



SM-0109-BRS **Short Key, Type I Cabinet Lock, 1-3/4"**

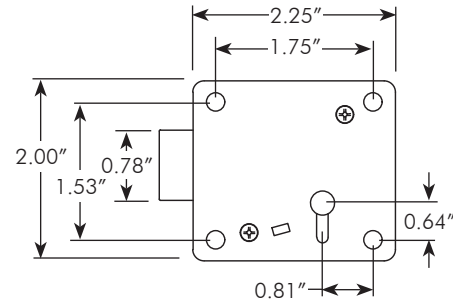
SM-0200-BRS **Long Key, Type I Cabinet Lock, 2-5/8"**



Cabinet Lock, Type IB

SM-1021 -  - BRS

- Keys
- OK=Lock Only
 - 1SK=Lock w/ 1 Key
 - 2SK=Lock w/ 2 Keys



SM-0338-M1 **Key, Type IB Cabinet Lock, Nickle Plated**

Note: 1. Specify key options when ordering.

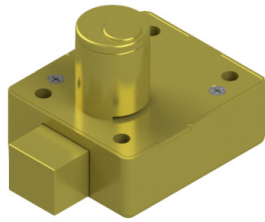


Type II Tumbler Lock

Aluminum Flasher Cabinets are weather resistant and are available for rear, top and bottom mounting. Various brackets are available for mounting to wood or metal poles. A complete line of Type II or Police Type cabinets are available.

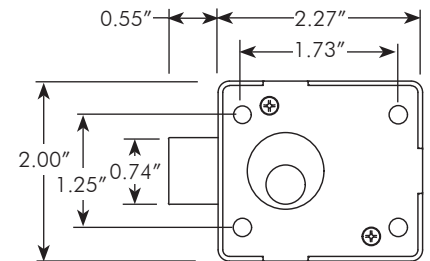


Cabinet Lock, Type II Square Latch



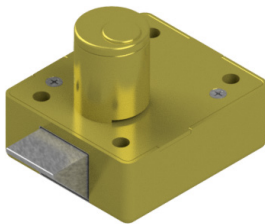
Keys
SM-1026 -  - BRS

OK=Lock Only
1K=Lock w/ 1 Key
2K=Lock w/ 2 Keys



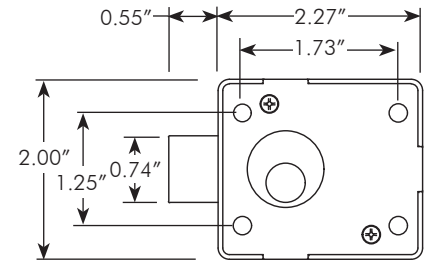
Note:
Right hand shown, for left hand rotate 180°.

Cabinet Lock, Type II Tapered Latch



Keys
SM-1023 -  - BRS

OK=Lock Only
1K=Lock w/ 1 Key
2K=Lock w/ 2 Keys



Note:
Right hand shown, for left hand rotate 180°.



SM-0198-2-CRM **Key, Type II Cabinet Lock**



SM-0198-B-CRM **Blank Key, Type II Cabinet Lock**

Note: 1. Unless otherwise specified, all locks will be provided to fit a Type II Key.



This page is intentionally left blank.

