

▶ With Pelco Products, innovation always comes standard.

Pelco Products, Inc. is a centrally located, Oklahoma-based, family owned business specializing in designing, engineering, manufacturing and distributing the finest products. Pelco manufactures traffic signal hardware, utility products, and decorative outdoor lighting. We are dedicated to serving our three primary markets globally through Innovative Solutions, Quality Products & Unparalleled Customer Service.

Our goal has always been to create a superior, quality and innovative product for a fair price, keeping service as the top priority. From creation to production, we ensure our products are of the highest quality and made from materials that will stand the test of time.

Please contact Pelco Products for more information by calling 405.340.3434 or email us at utilitysales@pelcoinc.com.

"We sell *service* and it just happens that we manufacture products that allow us to sell our *service*!"

Steve Parduhn
President/ CEO
Pelco Products, Inc.

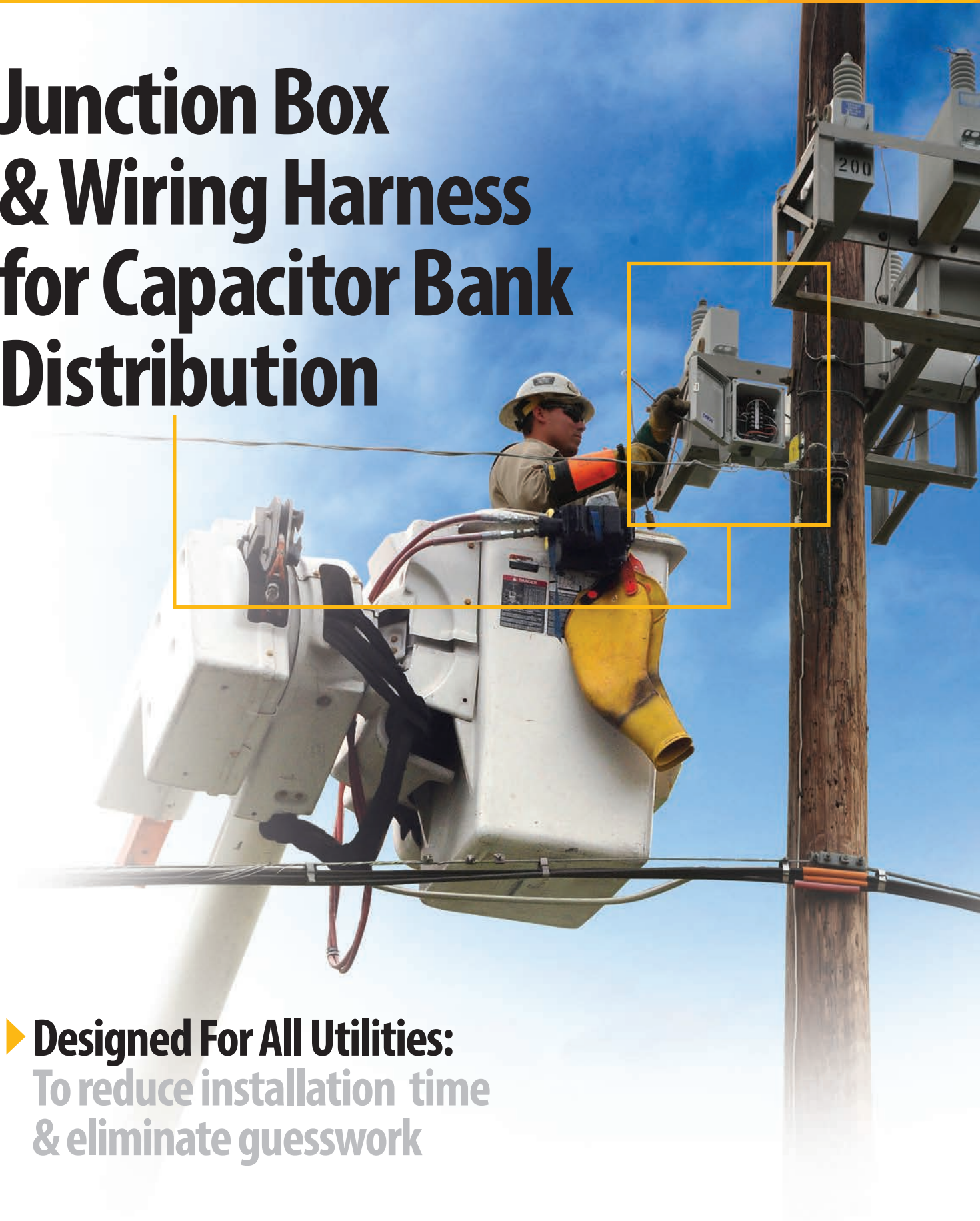


405.340.3434 • utilitysales@pelcoinc.com
320 West 18th Street • Edmond, OK 73013
www.pelcoinc.com



Junction Box & Wiring Harness for Capacitor Bank Distribution

▶ **Designed For All Utilities:**
To reduce installation time & eliminate guesswork



► Pelco's Capacitor Bank Junction Boxes provide an *economical advantage* over traditional capacitor bank installations.

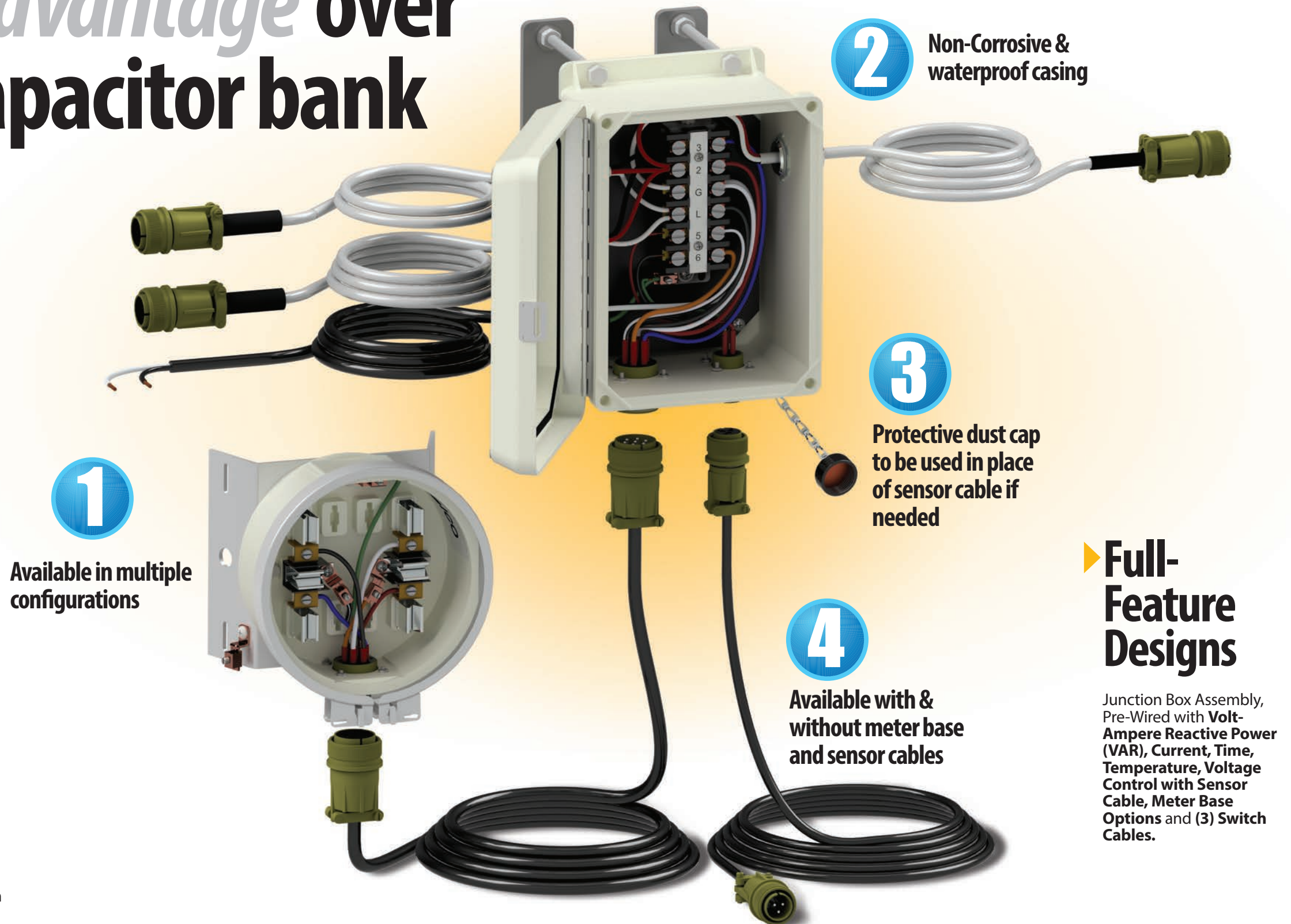
What typically requires 16-20 man hours of installation time can now be completed in two hours, without the need of guesswork. Pelco's Junction Boxes are delivered factory assembled, pre-wired and ready for immediate installation. **Our fail-safe "plug and play" design allows for a simplified, safe and worry-free installation.**

Designed for outdoor utility use, all Junction Box assemblies are weather-resistant and protect against corrosion to the exterior.

Unlike other capacitor junction boxes containing plastic connectors, Pelco's designs are equipped with **durable aluminum non-corrosive Mil-Spec/ Amphenol connectors** that are built to last. CGB connectors and hard wiring are also available upon request.

Increased Efficiency

- Simplified Installation
- Factory Assembled and Pre-wired
- Fail-Safe Plug and Play Design
- Reduced Labor Costs and Time
- Wiring Schematic Included for Ease of Installation
- Oil/Vacuum 5 Pin Standard, 8 Pin also available



1

Available in multiple configurations

2

Non-Corrosive & waterproof casing

3

Protective dust cap to be used in place of sensor cable if needed

4

Available with & without meter base and sensor cables

► Full-Feature Designs

Junction Box Assembly, Pre-Wired with **Volt-Ampere Reactive Power (VAR), Current, Time, Temperature, Voltage Control with Sensor Cable, Meter Base Options** and (3) Switch Cables.

▶ Pelco offers a wide variety of options to fit almost every specification.

■ Mil-Specs

Aluminum multi-pin Mil-Spec Amphenol connectors come keyed, sized & wired.



■ Versatile Mounting Brackets

Aluminum brackets configured for wood, rack, panel and steel pole mounting.

(More information on page 5.)

■ Weather-Resistant Box

Enclosure for capacitor bank junction is a NEMA 4X fiberglass box and includes a stainless latch.

(More information on page 6.)

■ Meter Base Configurations

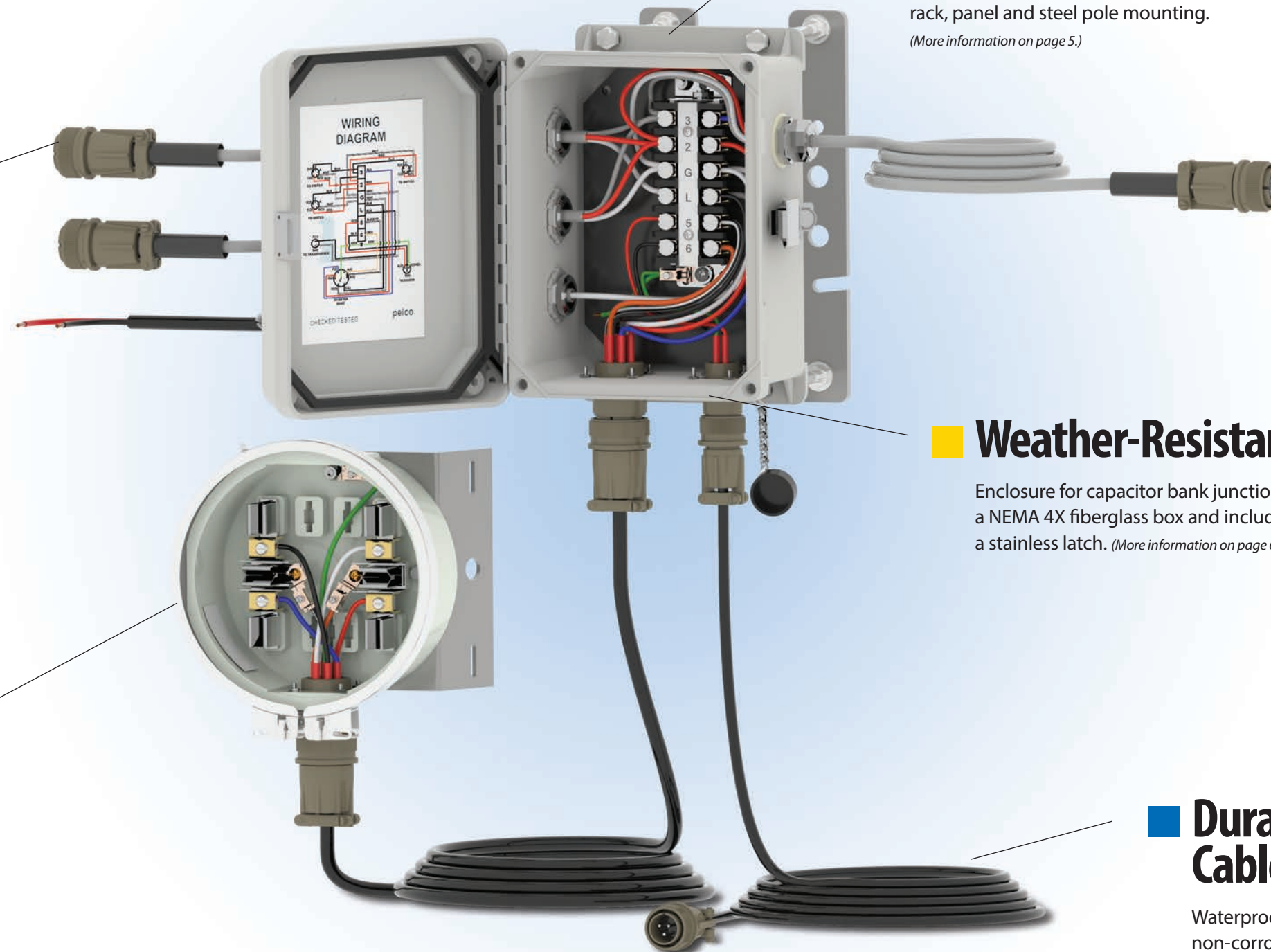
A variety of combinations are available to suit your needs.

(More information on page 4.)

■ Durable Cables

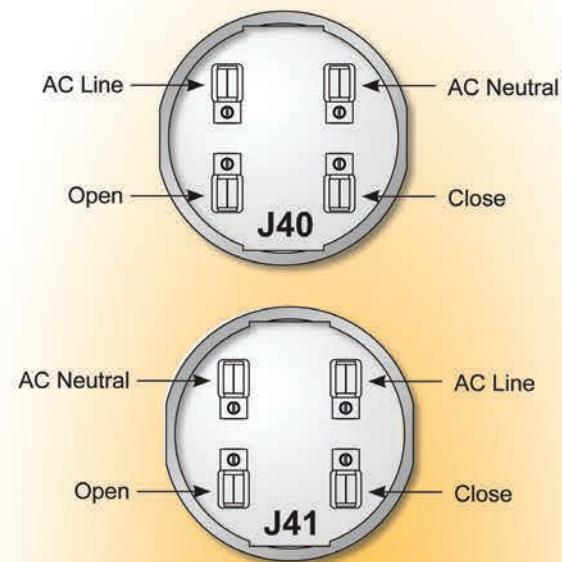
Waterproof, weather-resistant, non-corrosive and UV protected cables are available in various lengths and types.

(More information on page 8.)

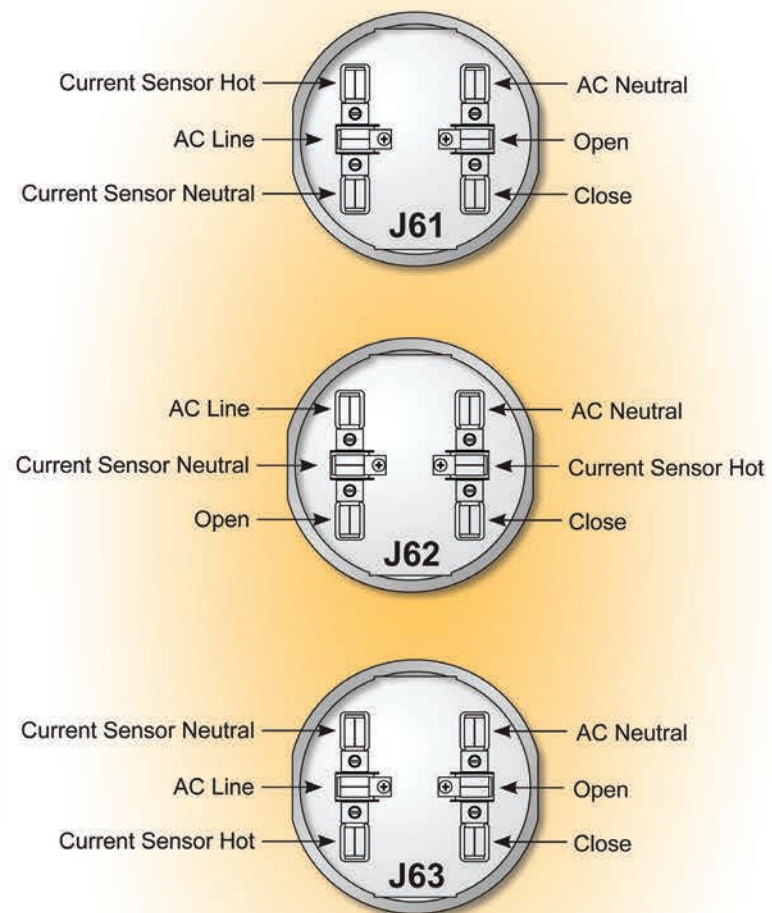


▶ Meter Base Wiring Configurations

4-Jaw Meter Base

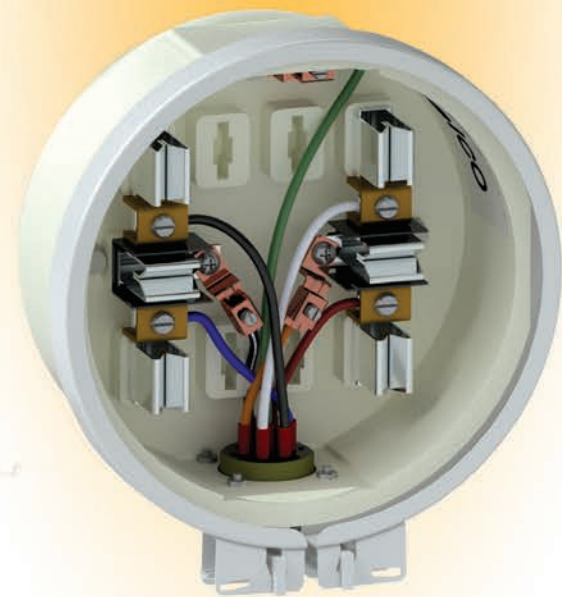


6-Jaw Meter Base

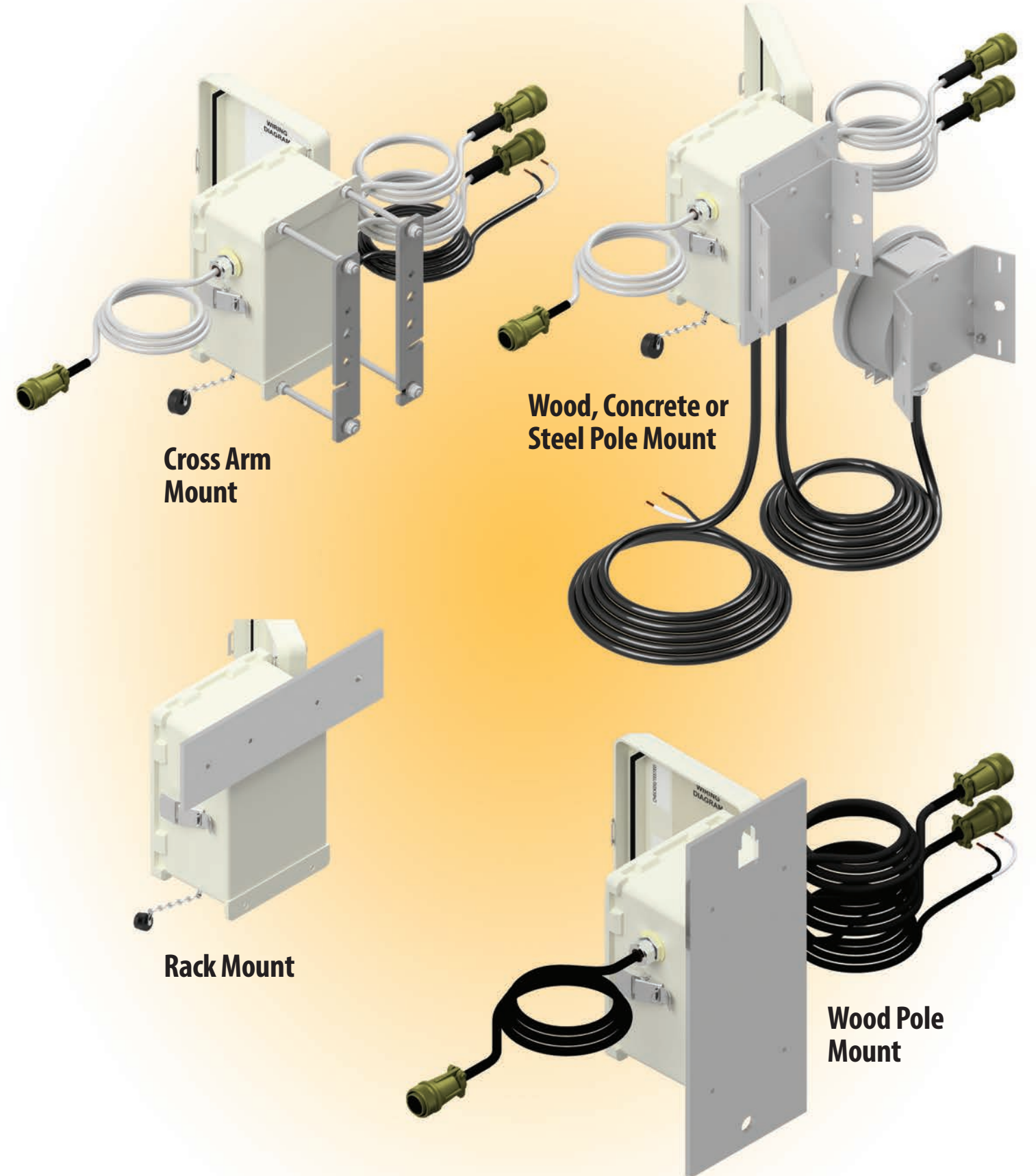


Diagrams are shown looking into the wired meter base.

Custom configuration available upon request.



▶ Mounting Brackets



▶ Capacitor Junction Box Enclosure

The enclosure is a fiberglass box that houses the terminal strip and connections for a capacitor bank junction.

Design:

The molded-on mounting flanges increase strength of the enclosure. Corner ribs reinforce strength in the cover corners. Enclosures are maintenance free and corrosion resistant. Enclosure design meets NEMA 4X requirements.

Note: Once holes and components are added, the rating is lowered to match that of the lowest rated component. (Can be as high as NEMA 4X but will depend on options)

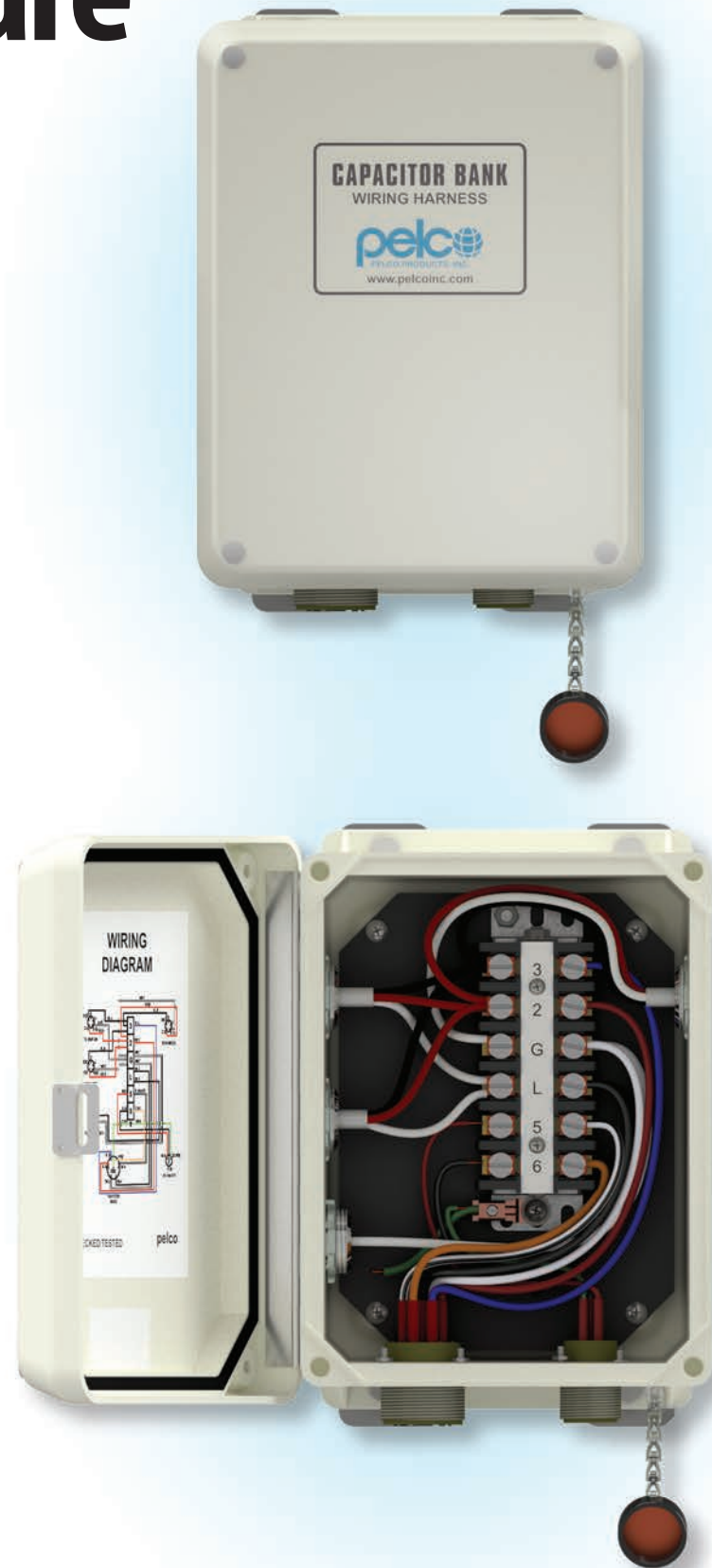
Hardware:

The door is attached to the body with a stainless steel continuous hinge. The latch is a stainless steel, padlock compatible latch.

Material:

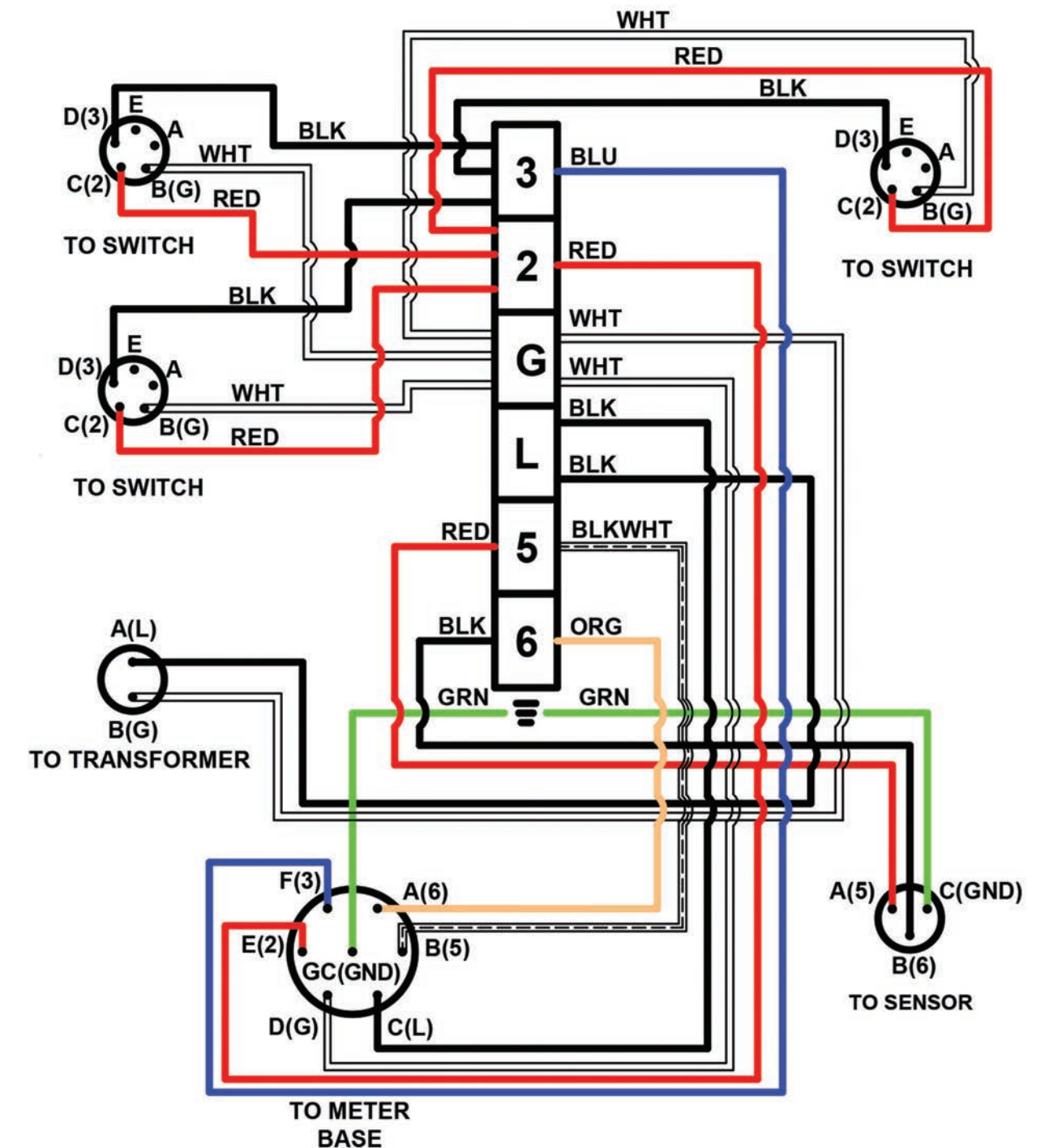
The body and door are made from hot compression molded halogen-free, self-extinguishing fiberglass reinforced polyester (FRP) that can withstand continuous temperatures from -58°F to 302°F and momentary exposure to temperatures up to 329°F.

The gasket is made from continuously poured polyurethane foam.



▶ Sample Wiring Diagram

This is what is included on the inside cover of every box. Color of wires in box will be true to diagram.



► Custom *configurations* & *cable lengths* available for all designs.



Special Cables

- Lindsey
- Fisher-Pierce
- Neutral Sensor
- Special Applications

Cables can be connected to box, Mil-Spec connector CGB or directly wired to terminal strip.

Cables

Standard, Lindsey, Fisher-Pierce, Neutral, Sensor Cables available in variable lengths with Mil-Spec to controller. Can be hardwired or connected to CGB or Mil-Spec at Junction Box.

► Pelco works directly with you to design for *your* needs.

Our focus on customer service ensures you will get the right products to fit your specifications. We can answer your technical questions and help you find the most economical solution.

Contact Pelco for options today.

405.340.3434
pelcoinc.com
utilitysales@pelcoinc.com

pelco 
PELCO PRODUCTS, INC.