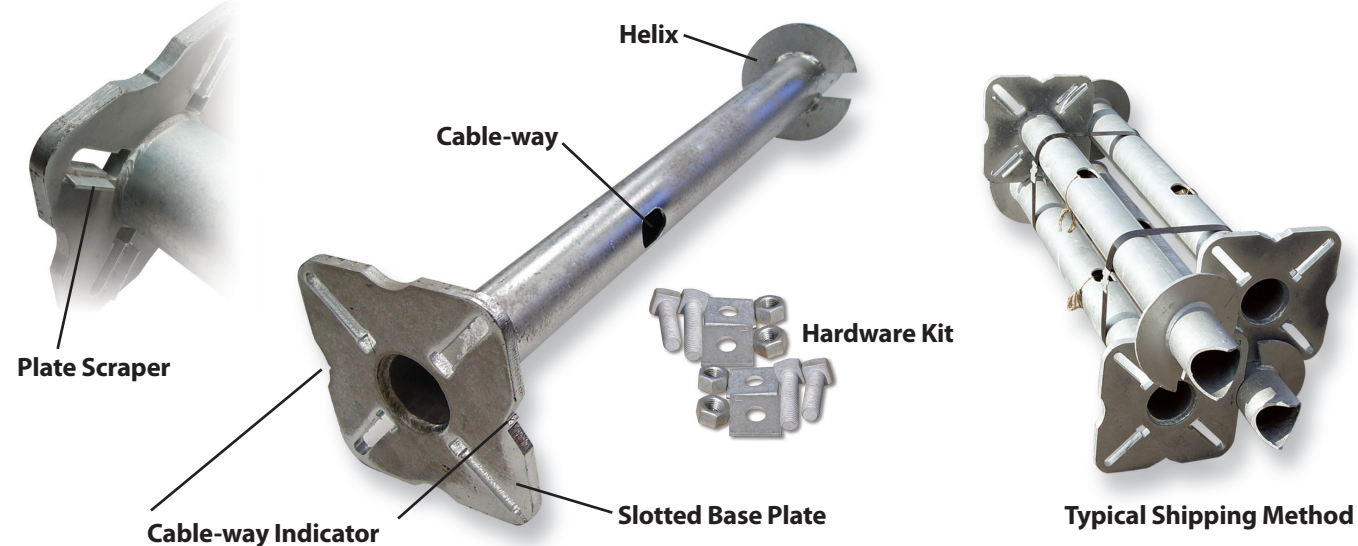


▶ Power-Installed Foundation Anchors

Typical size of foundation anchors include 4", 6", and 8" pole diameters. Custom configurations available.



▶ Anchor Bolt Set

Anchor bolt sets are available from 1/2" through 2". All sets come hot dip galvanized. Also available is a reusable Anchor Bolt Template. (Shown below.)



▶ Anchor Bolt Template

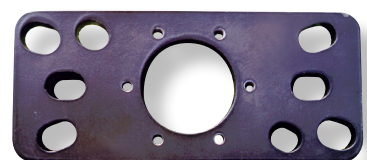
Anchor bolt templates are tools used to set anchor bolts in concrete. Pelco's anchor bolt template is capable of 41 different bolt circle patterns from 5.5" through 25.5". The template accepts up to two 2" conduits and multiple smaller conduits at one time.



▶ Anchor Bolt Cage

Fabricated to specific light pole bolt circles, eliminating the need for templates. All are hot dip galvanized and include hardware.

▶ Driver Adapter



▶ Leveling Shims



▶ With Pelco Products, innovation always comes standard.

Pelco Products, Inc. is a centrally located, Oklahoma based, family-owned business specializing in designing, engineering, manufacturing and distributing the finest traffic products. With engineering as a catalyst for growth, Pelco Products is proud of its Engineering Team consisting of engineers and technical staff with over 400 combined years of experience.

Founded in 1985 in a 2,500 square feet facility with 5 employees, the company now employs over 300 team members in 315,000 square feet of manufacturing space. The company is dedicated to serving its three primary markets (i.e. traffic, ornamental and utility) globally through Innovative Solutions, Quality Products & Unparalleled Customer Service.

Please contact Pelco Products for more information by calling 405.340.3434 or email us at sales@pelcoinc.com.

"We sell *service* and it just happens that we manufacture products that allow us to sell our *service*!"

Steve Parduhn
President/ CEO
Pelco Products, Inc.



405.340.3434 • sales@pelcoinc.com
320 West 18th Street • Edmond, OK 73013
www.pelcoinc.com



(Installation Video)



Street Light Foundation Solutions



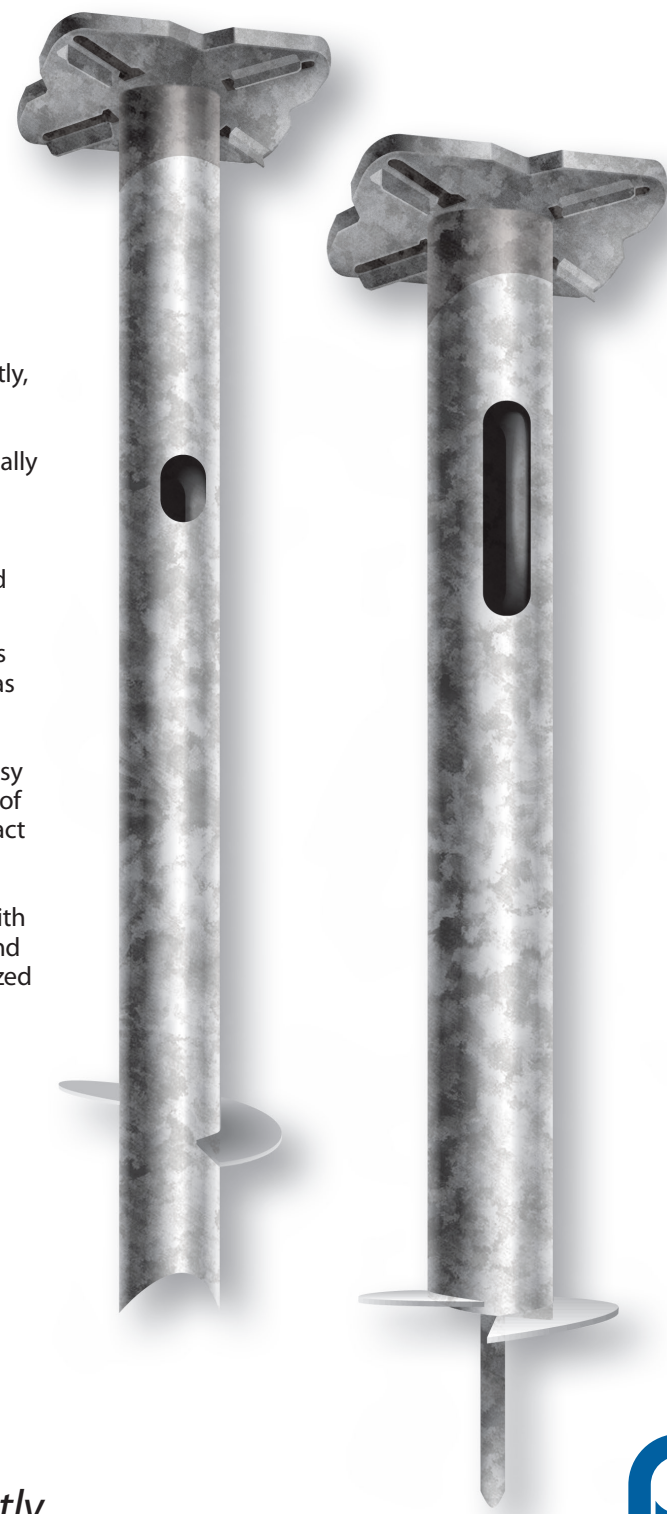
▶ The Most Economical, Efficient & Hassle-Free Foundation System Available

▶ Pelco Power-Installed Foundation Anchors require *Less Equipment & Reduced Labor.*

Our foundation anchors provide an economical advantage over traditional foundations by conserving the cost of labor, equipment, materials and most importantly, time. Our Power-Installed Foundation Anchors can be installed in minutes and typically require only a two-man crew. Without any excavation, the foundation anchors can be driven through most soils and blacktop conditions.

Our engineered design allows for all associated loads, such as wind and weather-resistance, compression and uplift. Plate scrapers loosen the soil for easy bolt installation from the top of the plate. Plate scrapers also act as a "back-up" wrench during installation of a light pole. All Hardware Kits are supplied with Grade 5 bolts. Foundations and hardware are hot dip galvanized per ASTM A123.

Pelco Products Power-Installed Foundation Anchors install quickly & efficiently for poles up to 50'.



▶ Economical

- No Delay for Immediate Pole Mounting
- Installation in Minutes
- Smaller Crew – Higher Production Rate
- No Concrete Required
- No Hole Digging
- Slotted Bolt Circles Fit a Variety of Poles

▶ Hassle-Free

- Plate Scrapers Loosen the Soil for Easy Bolt Installation
- Pole Bolts Directly to Foundation Anchor Base – Eliminates Problems of Misaligned Anchor Bolts
- No Advance Site Preparation
- Clean Installation – No Excavation
- Simplified Storage and Transportation



▶ Installation Steps

Pelco's Power-Installed Foundation Anchors are installed using a common construction vehicle with hydraulic rotary equipment and a conventional Kelly Bar. To view our online instructional video please visit www.pelcoinc.com/utility.

1

Bolt the installation assembly onto the foundation base plate.



2

Insert the point of the foundation anchor into the ground and rotate clockwise.



3

Level at 1' and 3'.



4

Confirm cable-way.



6

Attach light pole.



5

Install the anchor bolts.



The high-strength steel helix acts as a screw thread during installation, distributing the up-lift and compression forces. Without excavating to depth, the installation compacts the surrounding soil without removing any significant volume below grade. This is where our unique plate scrapers execute their intent by loosening the soil for easy bolt installation.



Installation is complete.

Our Power-Installed Foundation Anchors can be installed in minutes and typically require a two man crew.

*Call Pelco to learn more.
405.340.3434
pelcoinc.com*

*Innovation
Quality
Service*