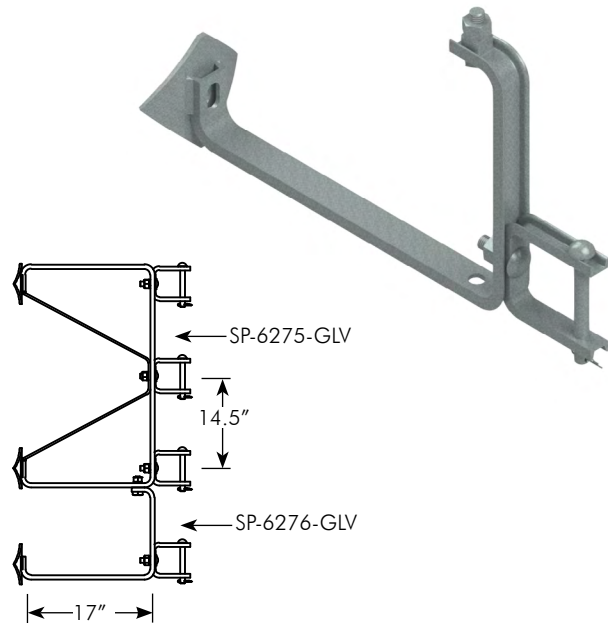


**Stand-off Bracket, 18"
 Galvanized Steel
 For Triple Conduit Mount**

SP-6275-GLV

Triple mount conduit holder for wood pole. Supplied with three U-Channel brackets. Galvanized steel.



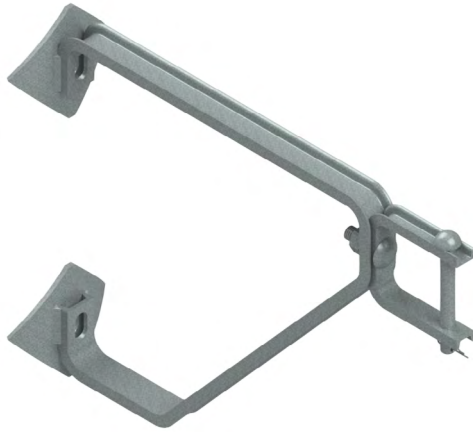
**Stand-off Bracket, ADA
 Galvanized Steel**

SP-6276-GLV

Used when a 4th conduit holder is required, by adding to the bottom of the SP-6275 Stand-off Bracket. Supplied with one U-Channel bracket. Galvanized steel.

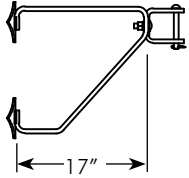
Note: 1. Steel brackets are hot dipped galvanized per ASTM A123.
 2. All assemblies are supplied standard with galvanized fasteners.





Stand-off Bracket, NE Galvanized Steel For Single Conduit Mount

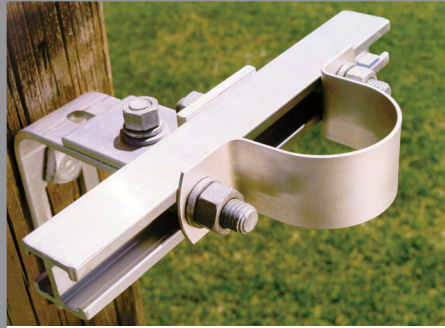
SP-6277-GLV



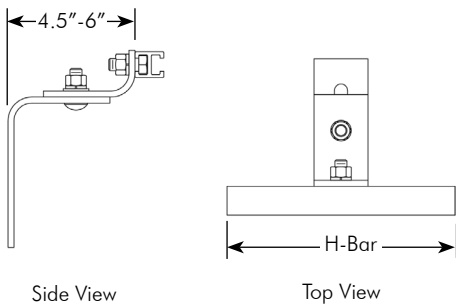
Single mount conduit holder for wood pole. Supplied with one U-Channel bracket. Galvanized steel.

- Note: 1. Steel brackets are hot dipped galvanized per ASTM A123.
2. All assemblies are supplied standard with galvanized fasteners.

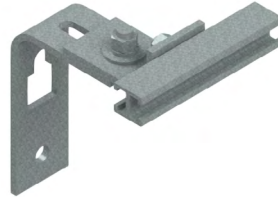




Shown with a preformed conduit strap.



Conduit Stand-Off Bracket, w/ Adjustable Stand-Off & H-Bar, Alum



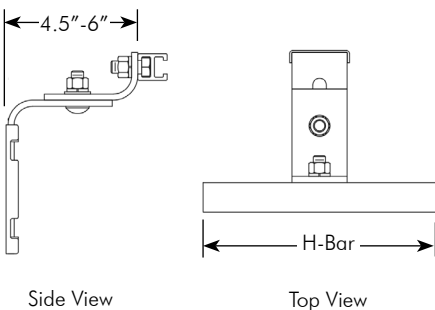
H-Bar Length
SP-6042 - - PNC

Blank=None
06=6"
09.5=9-1/2"
12=12"
18=18"
24=24"
36=36"

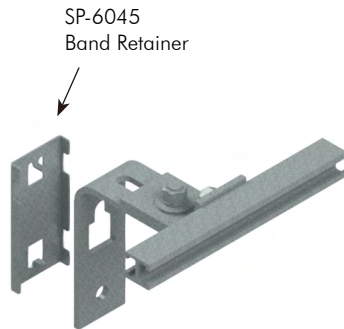
This bracket is for mounting 1" through 6" conduit and can adjust from a 4-1/2" to 6" stand-off. Available with various H-bar lengths which capture 1/2" bolt heads. Mounts to the pole with 5/8" thru-bolt or 1/2" lag screw. (not supplied).



Shown with a preformed conduit strap.



Conduit Stand-Off Bracket w/ Adjustable Stand-Off & H-Bar, Alum for Wood, Steel, or Concrete Poles



SP-6045
Band Retainer

H-Bar Length
SP-6046 - - PNC

Blank=None
06=6"
09.5=9-1/2"
12=12"
18=18"
24=24"
36=36"

For mounting 1" through 6" conduit and can adjust from a 4-1/2" to 6" stand-off. Available with various H-Bar lengths which capture 1/2" bolt heads. Mounts to the pole with 5/8" thru-bolt, 1/2" lag screw, or 1/2" banding material (*not supplied*).

- Note: 1. All assemblies are supplied standard with galvanized fasteners.
2. See page U1-9 for Preformed Conduit Straps.
3. See page U1-26 through U1-28 for banding products.



Shown with a preformed conduit strap.

Conduit Stand-Off Bracket w/ 6" Stand-Off & H-Bar, Alum for Wood, Steel, or Concrete poles

H-Bar Length

SP-6060 - - PNC

Blank=None

06=6"

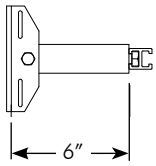
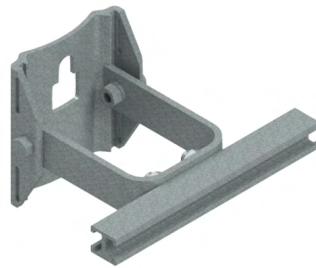
09.5=9-1/2"

12=12"

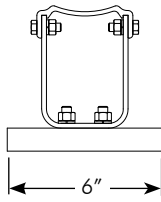
18=18"

24=24"

36=36"



Side View



Top View

A multi-purpose bracket with a 6" stand-off for mounting 1" through 6" conduit. Available with various standard H-bar lengths which capture 1/2" bolt heads. Mounts to the pole with 5/8" thru-bolt, 1/2" lag screw, or 1/2" banding material (not supplied).

- Note: 1. All assemblies are supplied standard with galvanized fasteners.
2. See page U1-7 for Preformed Conduit Straps.
3. See page U1-26 through U1-28 for banding products.



Conduit Stand-Off Bracket, Galvanized for Wood Poles, 1-1/4" x 1/8" Steel

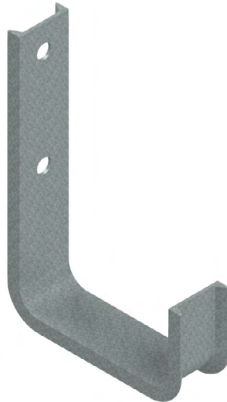


Conduit Size
SP-6273 - - GLV

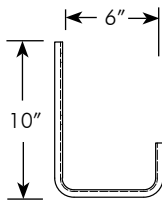
02=2"
03=3"
04=4"
05=5"
06=6"

For mounting 2" through 6" conduit. Bracket has 9/16" diameter holes for mounting to pole.

Conduit Stand-Off Bracket, Galvanized 2" Channel x 6" stand-off, Steel



SP-6347-GLV



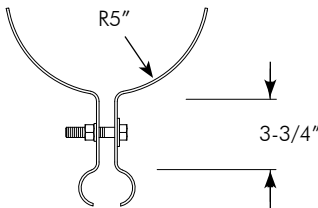
2" galvanized steel channel with a 6" stand-off for mounting conduit. Bracket has two 9/16" diameter holes for mounting to pole.

- Note: 1. Steel brackets are hot dipped galvanized per ASTM A123
2. All assemblies are supplied standard with galvanized fasteners.

Conduit Stand-Off Bracket, Galvanized for Wood Poles, 1-1/2" x 1/8" Steel

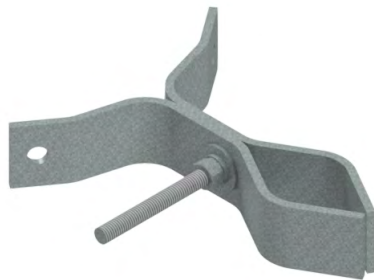


SP-6176-GLV

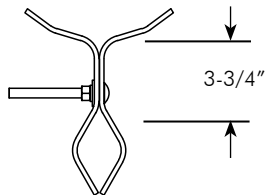


Two-piece galvanized steel bracket for mounting 1-1/4" conduit on Class 1 through Class 6 wood distribution poles. Provided with 1/2"-13NC hex hd bolt and hardware. Bracket has 5/8" diameter holes for mounting to pole.

Conduit Stand-Off Bracket, for Wood Poles, 2" x 1/4" Alum



SP-6345-PNC



Two-piece aluminum bracket for mounting 1-1/4" conduit on Class 1 through Class 6 wood distribution poles. Provided with 1/2"-13NC carriage bolt and hardware. Bracket has 5/8" diameter holes for mounting to pole.

- Note: 1. Steel brackets are hot dipped galvanized per ASTM A123
2. All assemblies are supplied standard with galvanized fasteners.





2-Way Standard H-Bar, Alum
Captures 1/2" Bolt Heads

H-Bar Length
SP-6025 - - PNC
 06=6"
 09.5=9-1/2"
 12=12"
 18=18"
 24=24"
 30=30"
 36=36"
 48=48"
 60=60"



SP-6025
 Standard H-Bar

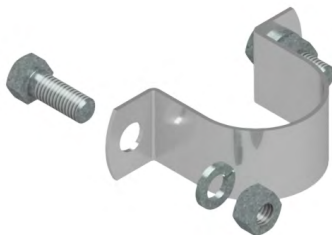


SP-6048
 Offset H-Bar

2-Way Offset H-Bar, Alum
Captures 1/2" & 5/8" Bolt Heads

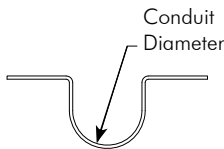
H-Bar Length
SP-6048 - - PNC
 06=6"
 09.5=9-1/2"
 12=12"
 18=18"
 24=24"
 30=30"
 36=36"
 48=48"
 60=60"

Extruded aluminum H-bars can be used for a variety of mounting applications and can be ordered in various standard lengths. The standard 2-way H-bar is designed to capture 1/2" bolt heads. The offset 2-way H-bar is designed to capture 1/2" and 5/8" bolt heads.



Preformed Conduit Strap, Alum
0.09" x 1-1/2" Alum
w/ 1-1/4" Long Bolts

Conduit Size
SP-6027 - - PNC
 1=1"
 1.5=1-1/2"
 2=2"
 2.5=2-1/2"
 3=3"
 4=4"
 5=5"
 6=6"



Preformed Conduit Strap, Alum
0.09" x 1-1/2" Alum
w/ 2" Long Bolts

Conduit Size
SP-6049 - - PNC
 1=1"
 1.5=1-1/2"
 2=2"
 2.5=2-1/2"
 3=3"
 4=4"
 5=5"
 6=6"

Preformed 0.09" x 1-1/2" straps available for 1" through 6" conduit. Each strap comes complete with (2) each galvanized hex head bolts, split lock washers, and hex nuts. Available with 1-1/4" or 2" long bolts.

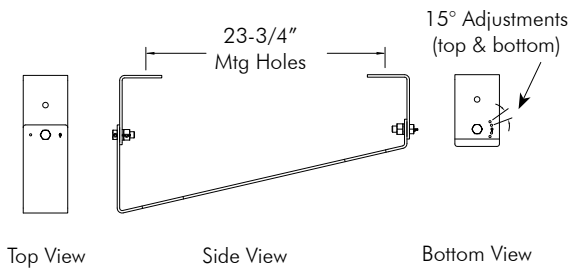
Note: 1. All assemblies are supplied standard with galvanized fasteners.



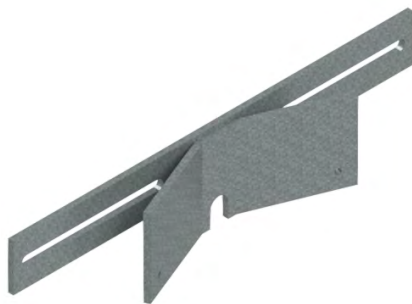


**Switch Mounting Bracket,
Galvanized
4-1/2" x 1/4" Steel
for Wood Poles**

SP-6019-GLV

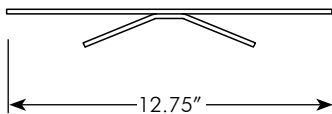


Three-piece galvanized steel mounting bracket. Designed to mount fuse and disconnect switches to a wood pole. Four adjustments on top and bottom in 15° increments.



**Meter Mounting Bracket,
Galvanized
for Wood Poles
3/16" Steel w/ 5/16" Slots**

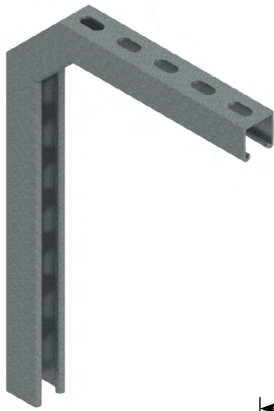
SP-6029-GLV



Steel bracket for mounting meter base on wood pole. Galvanized after fabrication.

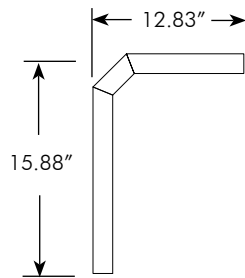
- Note: 1. Steel brackets are hot dipped galvanized per ASTM A123
2. All assemblies are supplied standard with galvanized fasteners.





**Wire Protector Bracket,
 Galvanized
 1.67" x 1.65" x 1/4" Steel
 for Wood Poles**

SP-6279-GLV

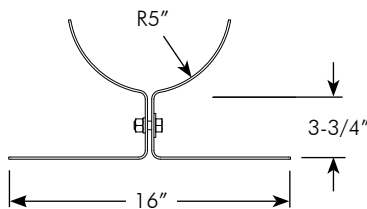


Protects the wire by running it inside the channel so it is not visible, acting as a theft deterrent.



**Meter Loop Cabinet Bracket,
 Galvanized
 for Wood Poles
 1/8" Steel w/ 17/32" Slots**

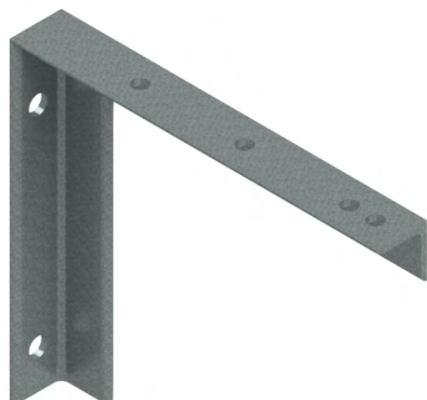
SP-6175-GLV



Two-piece galvanized steel mounting bracket. Designed to mount cabinet to Class 1 through Class 6 wood distribution poles. 5/8" diameter holes for mounting to pole.

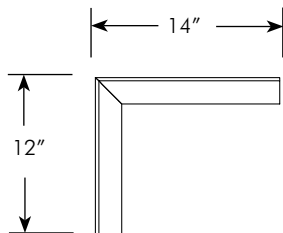
Note: 1. Steel brackets are hot dipped galvanized per ASTM A123
 2. All assemblies are supplied standard with galvanized fasteners.



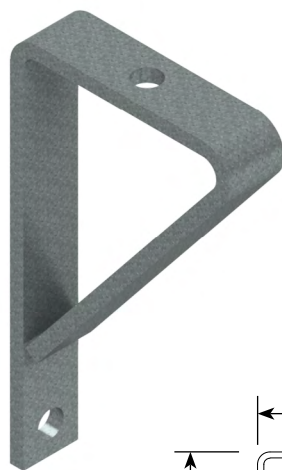


**Wall Bracket, Horizontal Support,
Galvanized Steel
for Transformer Vault
2" x 2" x 1/4" Angle
w/ (4) 9/16" & (2) 11/16" Holes**

SP-6253-GLV

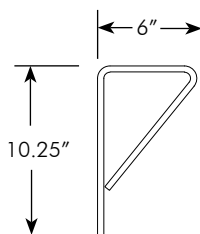


Used as a horizontal support in transformer vaults.
Galvanized after fabrication.



**Cutout Mounting Bracket,
Galvanized Steel
1-1/2" x 3/8" w/ (2) 11/16" Holes**

SP-6004-GLV

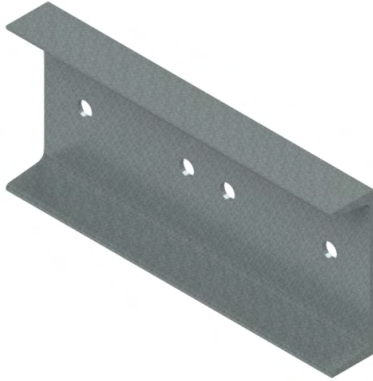


Attaches to the A26 vertical support brace to
provide a point of attachment for cutouts on a 17'
2 pole platform bank. Three brackets required per
station. Galvanized after fabrication.

Note: 1. Steel brackets are hot dipped galvanized per ASTM A123



**Mounting Bracket, Steel
for Group Operated Switch
7" Channel x 16" w/ (4) 11/16" Holes**



SP-6132-GLV

Group operated switch mounting.
Galvanized after fabrication.

**Feeder Arm Assy, Twin
Galvanized Steel
for 3-1/2"-5" Dia Pole**



SP-6248-GLV

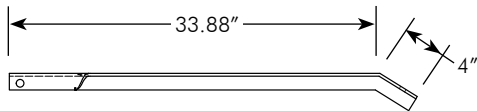
Galvanized after fabrication.

Note: 1. Steel brackets are hot dipped galvanized per ASTM A123

Angle Brace, Galv Steel for Wood Crossarm 1-1/2" x 1-1/2" x 1/4" w/ 9/16" & 11/16" Hole



SP-6260-GLV

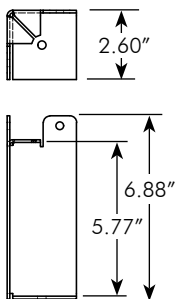


Angle brace for wood crossarm.
Galvanized after fabrication.

Bracket, Backup Battery Mount Steel, Galv



SP-6389-GLV



Galvanized after fabrication.

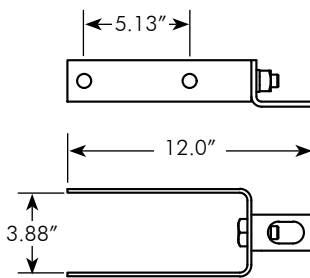
Note: 1. Steel brackets are hot dipped galvanized per ASTM A123





**Bracket Assembly,
Cross Arm Take Off
for Service Drops,
Steel, Galv**

SP-6385-GLV



Galvanized after fabrication.

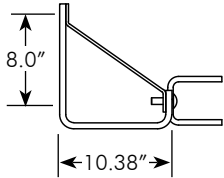
- Note: 1. Steel brackets are hot dipped galvanized per ASTM A123
2. All assemblies are supplied standard with galvanized fasteners.

This page is intentionally left blank.



Bracket Assembly, Single Spool Steel, Galv

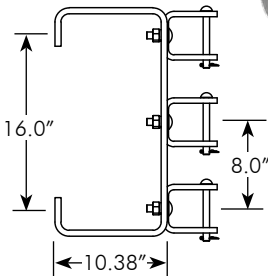
SP-6377-GLV



Galvanized after fabrication.

Secondary Rack Assembly, 3-Spool Steel, Galv

SP-6378-GLV

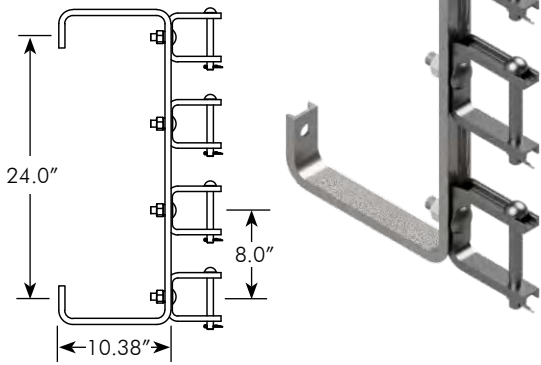


Galvanized after fabrication.

Note: 1. Steel brackets are hot dipped galvanized per ASTM A123
 2. All assemblies are supplied standard with galvanized fasteners.

Secondary Rack Assembly, 4-Spool Steel, Galv

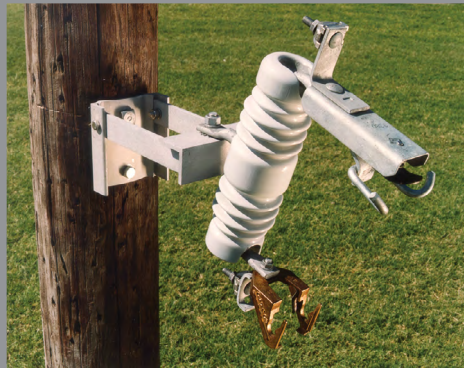
SP-6379-GLV



Galvanized after fabrication.

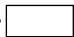
- Note: 1. Steel brackets are hot dipped galvanized per ASTM A123
2. All assemblies are supplied standard with galvanized fasteners.



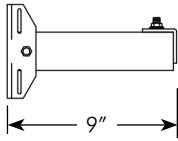
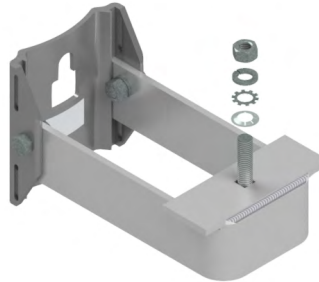


Shown with terminator.

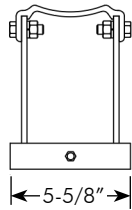
Bolted Equipment Mount, Alum Single-Phase, Single Mount

Insulator Pad
 SP-6057 -  - PNC

BP=Bent
 SP=Straight



Side View

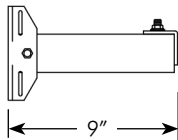
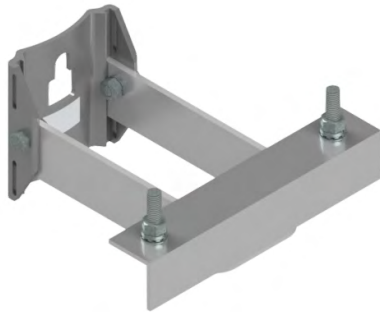


Top View

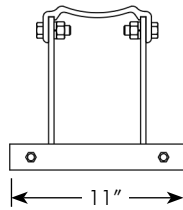
For mounting single cutouts, lightning arresters, or potheads. Mounts to pole with 5/8" thru-bolt, 1/2" lag screw, or 1/2" banding material (*not supplied*). Two units may be mounted back-to-back on pole using same thru-bolt.

Bolted Equipment Mount, Alum Single-Phase, 2-piece Mount

SP-6088-PNC



Side View



Top View

For mounting two pieces of equipment. Mounts to pole with 5/8" thru-bolt, 1/2" lag screw, or 1/2" banding material (*not supplied*). Two units may be mounted back-to-back on pole using same thru-bolt.

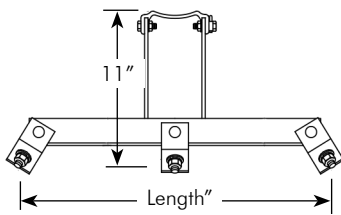
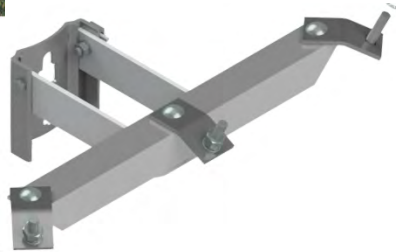
Note: 1. All assemblies are supplied standard with galvanized fasteners.
 2. See pages U1-26 through U1-28 for banding material.





Bolted Equipment Mount, Alum Three-Phase, 3-piece Mount

Length
 SP-6064 - - PNC
 23=23-1/4"
 33=33-1/2"

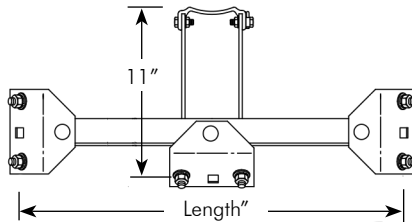
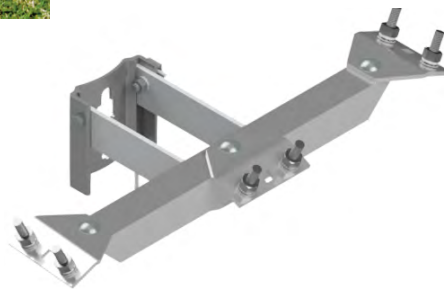


For mounting 3 pieces of equipment: potheads, Arresters, and cable terminators. Supplied with grounding lug, galvanized bolts, lock washers and nuts. Mounts to pole with 5/8" thru-bolt, 1/2" lag screw or 1/2" banding material (*not supplied*).



Bolted Equipment Mount, Alum Three-Phase, 6-piece Mount

Length
 SP-6065 - - PNC
 24=24-3/4"
 35=35"



For mounting 6 pieces of equipment: potheads, arresters, and cable terminators. Supplied with grounding lug, galvanized bolts, lock washers, and nuts. Mounts to pole with 5/8" lag screw or 1/2" banding material (*not supplied*).

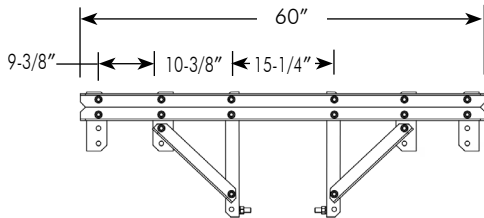
Note: 1. All assemblies are supplied standard with galvanized fasteners.
 2. See pages U1-26 through U1-28 for banding material.



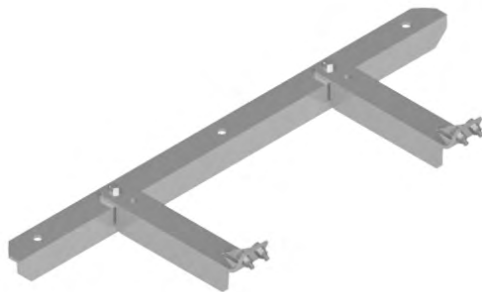


Arrestor Mount Bracket, Alum Three-Phase, Load Side

SP-6324-PNC

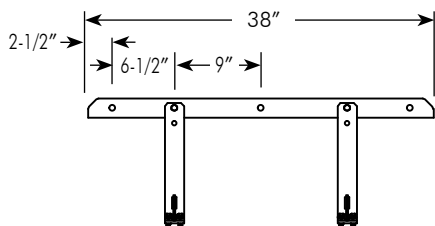


Three phase load side arrester frame for mounting reclosures.



Arrestor Mount Bracket, Alum Three-Phase, Line Side

SP-6325-PNC



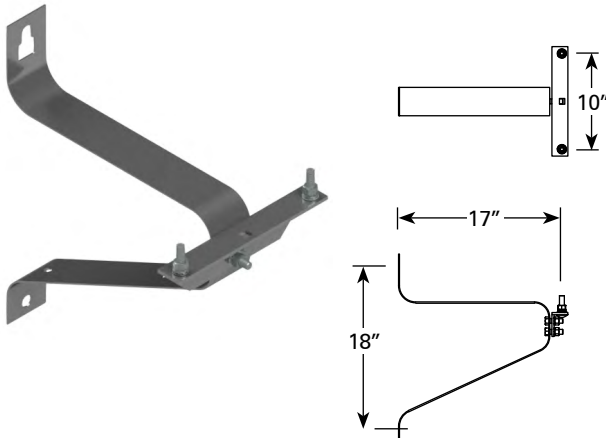
Three phase line side arrester frame for mounting reclosures.

Note: 1. Arrester mount brackets are supplied standard with stainless steel fasteners.



Bolted Equipment Mount, Alum Single-Phase

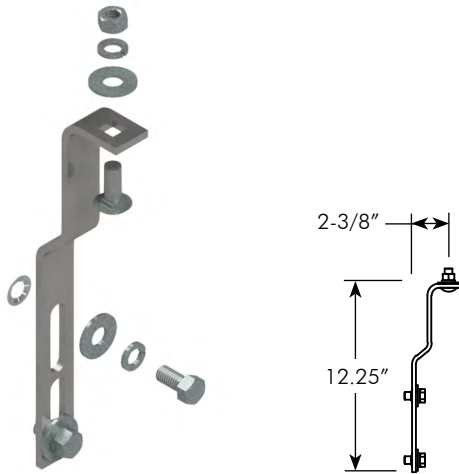
SP-6092-PNC



For mounting individual cutouts and Arresters at a distance of 17" from the pole. A 5/8" thru-bolt (not supplied) is recommended for installation. Two units may be mounted back-to-back on the pole using the same thru-bolt.

Arrester Mounting Bracket, Steel 1-1/4" x 12-1/4" w/ 1/2"-13NC Hardware

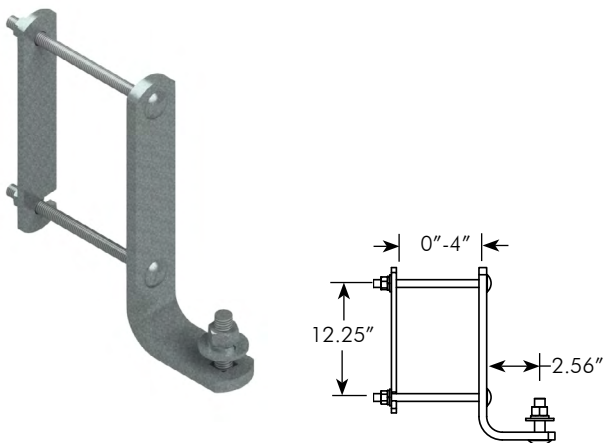
SP-6346-GLV



For mounting individual Arresters at a distance of 2-3/8" from the pole. Two 9/16" slots are for adjustable mounting to the pole. Supplied with 1/2"-13NC hardware.

Cross Arm Bracket, Steel w/ Galvanized Hardware

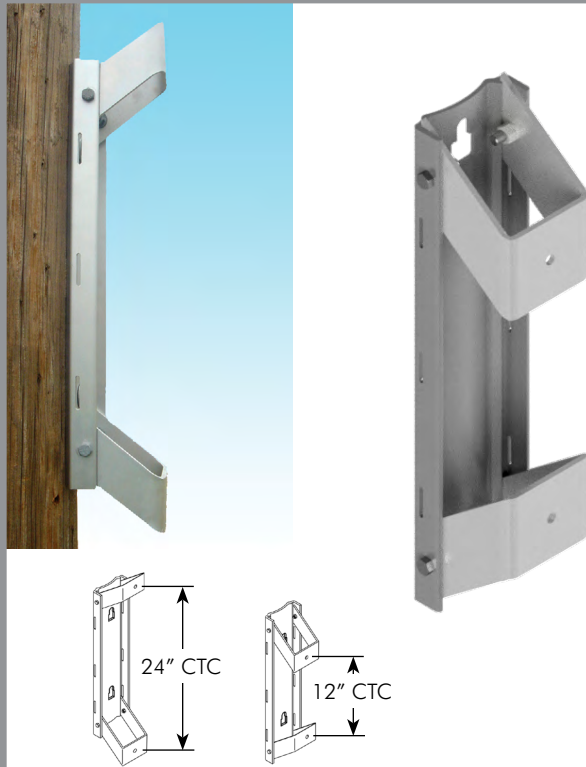
SP-6354-GLV



The 90° L-shaped bracket is 3/8" x 1-1/4" galvanized steel which can be adjusted from 0"-4" from the 1/4" thick mounting bar using the 3/8"-16NC tap bolts. Supplied with 1/2"-13NC x 2" carriage bolt, flatwasher, lock washer, and nut.

Note: 1. All assemblies are supplied standard with galvanized fasteners.



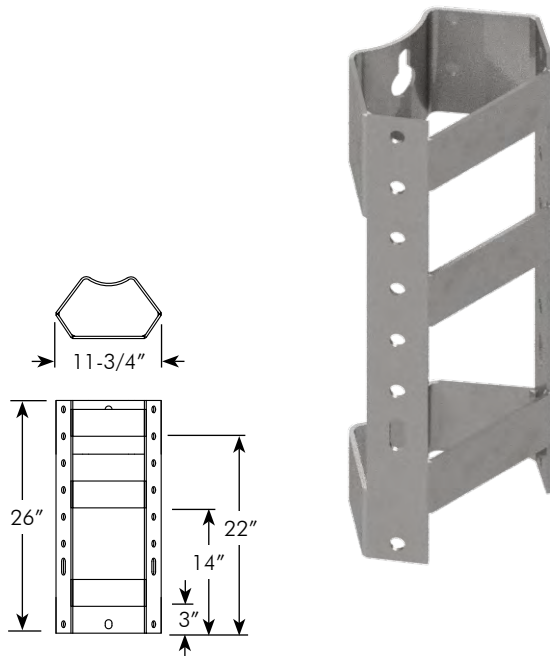


Transformer Mounting Bracket Aluminum

SP-6157-PNC

For mounting one 3KVA thru 100KVA transformer, having 12" or 24" EEI-NEMA type A or B lugs. Mounts to pole with 5/8" thru-bolts, 1/2" lag screw, or three 1-1/2" bands (not supplied).

Transformer Mounting Bracket Steel, Galv

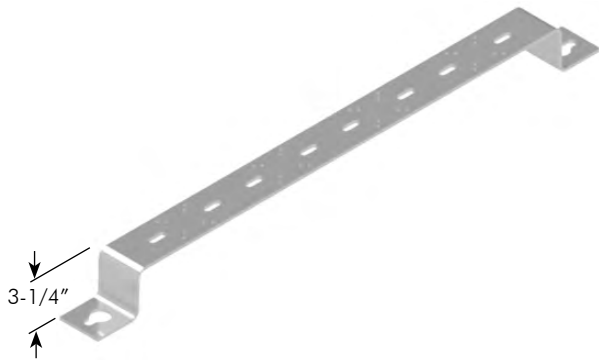


SP-6384-GLV

For mounting one transformer. Mounts to pole with 5/8" thru-bolts or 1/2" lag screws (not supplied).

Note: 1. All assemblies are supplied standard with galvanized fasteners.
 2. See pages U1-26 through U1-28 for banding material.



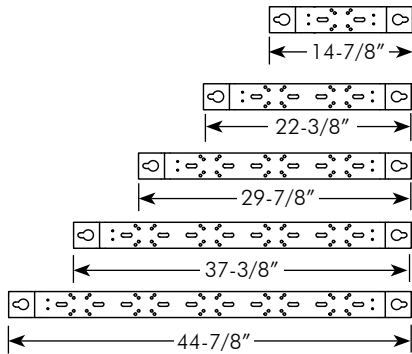


Mounting Bracket, Alum Current or Voltage Transformers

Current or Voltage
Transformers

SP-6283 - - PNC

- 1=for 1 CT or VT
- 2=for 2 CT or VT
- 3=for 3 CT or VT
- 4=for 4 CT or VT
- 5=for 5 CT or VT

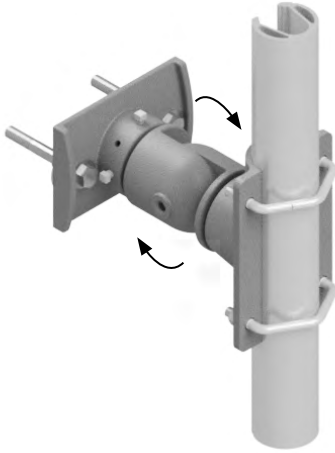


For mounting one through five current or voltage transformers. 1/4" x 3" bracket with 3-1/4" offset and 9/16" keyhole mounting slots on each end.

Note: 1. All assemblies are supplied standard with galvanized fasteners.
2. See pages U1-26 through U1-28 for banding material.



Antenna Mount Assy, Alum Serrated Articulating Elbow & Tube Saddle

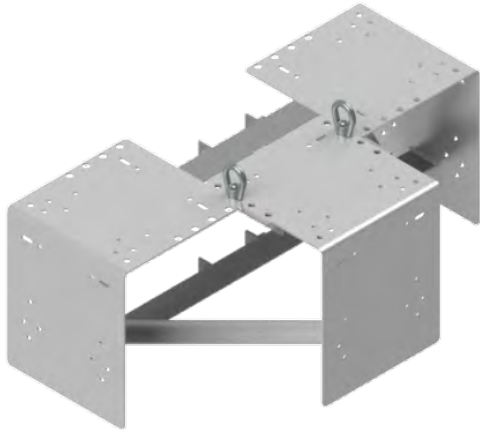


Tube Length
SP-6338 - - PNC
Blank=No Tube
12=12" Tube

Adjustable assembly with a 1-7/8" OD gusseted tube for mounting antennas. Articulating elbow and saddle have serrated teeth that provide for locking the tube position after adjustment. 3/8"-16NC hardware provided for mounting the hub plate.

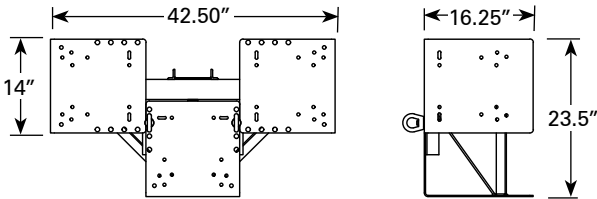
Note: 1. All assemblies are supplied standard with stainless fasteners.





Meter Mount Assy, 3-Position for 6 pcs of Equipment, Aluminum

SP-6369-PNC



For mounting current and potential transformers for primary metering hookups. Fabricated from aluminum and supplied with galvanized oval eye nuts for lifting to pole mounting height. Mounts to pole with 5/8" thru-bolts on 12" centers (not supplied).



Meter Base Frame Aluminum 30" x 84"

Coating
SP-6357-

PNC=Process No Color
P__=Paint

Fabricated from 1-1/2" sch 80 aluminum pipe and 2" angle. Complete with mounting holes and 1/2"-13 tapped hole for grounding lug. Typically processed with no color, but powder coating is available.

Note: 1. All assemblies are supplied standard with galvanized fasteners.
2. See Reference Section for available paint colors.



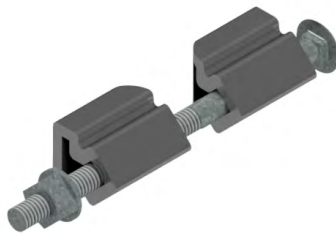


Shown with band (sold separately).

Retainer Kit, EZ-Band Alum w/ Galv Hardware Standard Duty for 3/4" Band

Coating
US-8500-

PNC=Process No Color
P__=Paint



Extruded aluminum fittings with galvanized hardware. To be used with 3/4" banding for mounting brackets to poles. Included 3/8"-16 x 6" galvanized carriage bolt, flat washer and square nut.

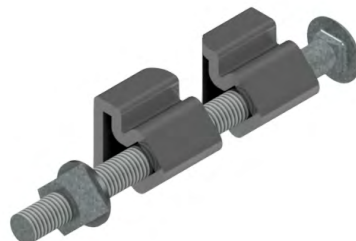


Shown with band (sold separately).

Retainer Kit, EZ-Band Alum w/ Galv Hardware Heavy Duty for 1-1/4" Band

Coating
US-8504-

PNC=Process No Color
P__=Paint



Extruded aluminum fittings with galvanized hardware. To be used with 1-1/4" banding for mounting brackets to poles. Included 5/8"-11 x 8" galvanized carriage bolt, flat washer and square nut.

Note: 1. All assemblies are supplied standard with galvanized fasteners.
2. See pages U1-26 through U1-28 for banding material.



Catalog Number	Width		Thickness		Weight	
	Inches	mm	Inches	mm	Lbs	Kg
TYPE 201 STAINLESS STEEL BAND - 100 Ft. Per Roll						
US-8122-04	1/2	12.70	0.030	0.76	5.1	2.4
US-8122-05	5/8	15.88	0.030	0.76	6.4	3.0
US-8122-06	3/4	19.05	0.030	0.76	7.7	3.6

TYPE 316 STAINLESS STEEL BAND - 100 Ft. Per Roll						
US-8124-04	1/2	12.70	0.030	0.76	5.1	2.4
US-8124-05	5/8	15.88	0.030	0.76	6.4	3.0
US-8124-06	3/4	19.05	0.030	0.76	7.7	3.6

HEAVY DUTY (HD) BANDING

Heavy Duty Band is available in type 201. HD Band is designed for heavy duty applications and 1-1/4", 201 stainless steel band has a breaking strength of approximately 5500 lbs. We recommend double wrapping for maximum strength.

Catalog Number	Width		Thickness		Weight	
	Inches	mm	Inches	mm	Lbs	Kg
TYPE 201 HEAVY DUTY STAINLESS STEEL BAND - 100 Ft. Per Roll						
US-8124-30	3/4	19.05	0.044	1.12	11.6	5.4
US-8124-31	1	25.40	0.044	1.12	13.7	6.4
US-8124-32	1-1/4	31.75	0.044	1.12	17.2	8.0

BAND-STRAP .024" (.061mm) THICK - 200 - 300 Stainless Steel

Catalog Number	Width		Weight		Package Quantity
	Inches	mm	Lbs	Kg	
US-8121-34	1/2	12.70	4.08	1.85	100 Ft. Roll
US-8121-35	5/8	15.88	5.09	2.31	100 Ft. Roll
US-8121-36	3/4	19.05	6.11	2.77	100 Ft. Roll
US-8121-28	1/2	12.70	8.15	3.70	200 Ft. Roll
US-8121-29	5/8	15.88	10.19	4.62	200 Ft. Roll
US-8121-30	3/4	19.05	12.23	5.54	200 Ft. Roll



BAND TOOL

The USA BAND TOOL is a forged double-plated tool capable of tensioning over 2400 lbs. The banding tool has a built-in cutter and a spring loaded gripper lever. The spin handle has a large retaining ring to keep the handle in place and can be used to hang on a tool belt.

Catalog Number	Description
US-8120-01	The USA Band Tool, Wt. 4.4 lbs (2.0 kg) - Package Quantity 1
US-8120-43	Close Quarter Tension Nut. Replaces tool tension handle when space is limited. Package Quantity 1
US-8120-06	Tension Screw/Handle kit - Package Quantity 1



HEAVY DUTY BAND TOOL

The Heavy Duty TOOL must be used with all Heavy Duty Bands. The HD TOOL is 16-1/2 inches long and is capable of up to 6,000 lbs. of tensioning.

Catalog Number	Description
US-8121-10	The Heavy Duty Tool, Wt 11.7 lbs (5.3 Kg) - Package Quantity 1

BUCKLES

Catalog Number	Width		Weight	
	Inches	mm	Lbs	Kg

TYPE 201 STAINLESS STEEL BUCKLES - Package Quantity 100

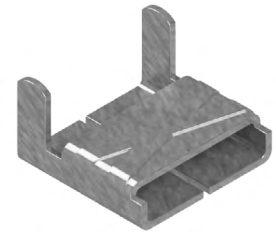
US-8122-54	1/2	12.70	2.1	1.0
US-8122-55	5/8	15.88	2.4	1.1
US-8122-56	3/4	19.05	3.7	1.7

TYPE 316 STAINLESS STEEL BUCKLES - Package Quantity 100

US-8124-54	1/2	12.70	2.1	1.0
US-8124-55	5/8	15.88	2.4	1.1
US-8124-56	3/4	19.05	3.7	1.7

GALVANIZED CARBON STEEL BUCKLES - Package Quantity 100

US-8123-54	1/2	12.70	2.1	1.1
US-8123-55	5/8	15.88	2.4	1.1
US-8123-56	3/4	19.05	3.7	1.7



HEAVY DUTY BUCKLES

HD Buckles are offered in widths and metals to correspond to HD Band. Clamps may be double wrapped for extra strength.

Catalog Number	Width		Weight	
	Inches	mm	Lbs	Kg

TYPE 201/301 STAINLESS STEEL - Package Quantity 25

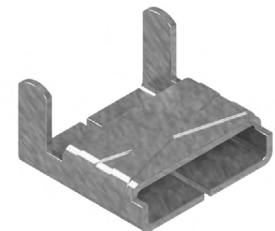
US-8124-40	3/4	19.05	1.8	0.8
US-8124-41	1	25.40	2.4	1.1
US-8124-42	1-1/4	31.75	3.2	1.4

BAND CLIPS

Catalog Number	Width		Weight	
	Inches	mm	Lbs	Kg

TYPE 201 STAINLESS STEEL BAND CLIPS - Package Quantity 100

US-8121-54	1/2	12.70	2.1	1.0
US-8121-55	5/8	15.88	2.4	1.1
US-8121-56	3/4	19.05	3.7	1.7

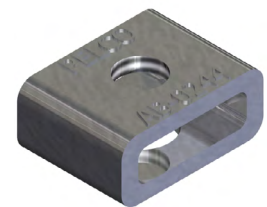


A-SCREW LOCK BUCKLES - Stainless Steel

Catalog Number	Width		Weight		Package Quantity
	Inches	mm	Lbs	Kg	

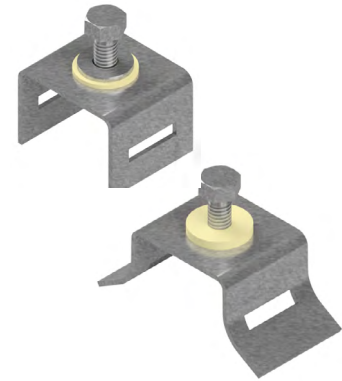
US-8127-24	1/2	12.70	2.1	1.0	25
US-8127-25	5/8	15.88	2.4	1.1	25
US-8127-26	3/4	19.05	3.7	1.7	25

Width Inches	201		316		Thick	Force	Thick	Force	Thick	Force
	Thick	Force	Thick	Force						
1/2	0.030	1500	1200	0.015	600	0.020	850	0.025	1050	
5/8	0.030	1875	1500	0.015	750	-	-	-	-	



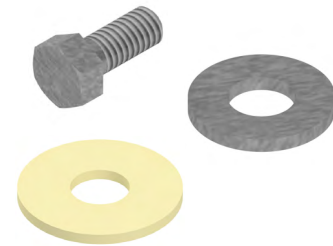
SIGN MOUNTING BRACKETS

Catalog Number	Description	Weight	
		Lbs	Kg
1-BOLT STRAIGHT LEG BRACKET (.075" THICK) - Package Quantity 50			
US-8121-00	Stainless Steel with SS Bolt, Washer and Fiber Washer	7.3	3.3
US-8120-04	Stainless Steel without Bolt or Washer		
US-8120-11	Zinc Plated Steel with Carbon Bolt, Washer and Fiber Washer	7.6	3.5
1-BOLT FLARED LEG BRACKET (.075" THICK) - Package Quantity 50			
US-8120-21	Stainless Steel with SS Bolt and Fiber Washer	7.6	3.5
US-8120-31	Zinc Plated Steel with Carbon Bolt, Washer and Fiber Washer	7.4	3.4



BOLTS, WASHERS for BRACKETS - 50 Per Box

Catalog Number	Description
US-8120-02	Bolts Stainless Steel for Stainless Brackets (5/16 - 18 x 3/4" Long Hex Head)
US-8121-80	Bolts Zinc Plated Steel for Carbon Steel Brackets (5/16 - 18 x 3/4" Long Hex Head)
US-8120-03	Fiber Washers



MOUNTING PLATES - Per Each - Secure with band and buckles.

Strapping holds this extruded aluminum mounting plate to utility poles.

Catalog Number	Description	Weight Lbs/Ea
US-8125-10	Light Duty, 1-1/2" x 4-3/4" w/ 5/8"-11 x 2" Plated Bolt	0.57
US-8125-12	Heavy Duty, 1-1/2" x 5-1/4" w/ 5/8"-11 x 2" Plated Bolt	0.78
US-8125-11	Heavy Duty, 1-1/2" x 5-1/4" w/ 5/8"-11 x 3" Plated Bolt	0.84
US-8125-13	Heavy Duty, 1-1/2" x 5-1/4" w/ 3/4"-11 x 3" Plated Bolt	1.22

