

Plumbizers Aluminum

Pelco's aluminum Plumbizers, available in both straight and offset configurations, are designed to mount traffic signal assemblies to the end of a mast arm. Provided with hardware for mounting onto a 2-3/8" diameter tenon.



Straight Plumbizer Assy, Alum w/ Hardware

SE-0352 - Coating
PNC=Process No Color
P__=Paint



Offset Plumbizer Assy, Alum w/ Hardware

SE-0353 - Coating
PNC=Process No Color
P__=Paint



Offset Plumbizer Assy, Alum Large Hole w/ Hardware

SE-4018 - Coating
PNC=Process No Color
P__=Paint

Note: 1. All assemblies are supplied standard with stainless steel fasteners.
2. See Reference Section for available paint colors.



Plumbizers Bronze & Iron

Pelco's bronze and iron offset Plumbizers are designed to mount traffic signal assemblies on the end of a mast arm. Provided with hardware for mounting onto a 2-3/8" diameter tenon.



Offset Plumbizer Assy, Bronze w/ Hardware

SE-4413 - Coating
PNC=Process No Color
P__=Paint



Offset Plumbizer Assy, Bronze Large Hole w/ Hardware

SE-4243 - Coating
PNC=Process No Color
P__=Paint



Offset Plumbizer Assy, Iron Large Hole w/ Hardware

SE-3335 - Coating
P__=Paint

Note: 1. All assemblies are supplied standard with stainless steel slotted washers and fasteners, with galvanized hardware on outlet body. Stainless upgrade shall include stainless steel hardware and pins.
3. See Reference Section for available paint colors.



Mast Arm Hangers Aluminum

Pelco's aluminum Mast Arm Hangers are designed to mount traffic signal assemblies on the end of a mast arm. Available in both 1-1/2" and tri-stud. Provided with hardware for mounting to a 2-3/8" diameter tenon.



Rigid Mast Arm Hanger, Alum 1-1/2" NPS w/ Hardware

SE-0350 - -

Double Set Screws Coating
Blank=None PNC=Process No Color
DS=Double P__=Paint
Set Screws



SE-3042
Hardware Kit

Rigid Mast Arm Hanger, Alum Cast Nipple

SE-3056 -

Coating
PNC=Process No Color
P__=Paint



SE-5123
Hardware Kit

Rigid Mast Arm Hanger, Alum Tri-Stud

SE-3119 -

Coating
PNC=Process No Color
P__=Paint

Note: 1. All assemblies are supplied standard with stainless steel fasteners.
2. See Reference Section for available paint colors.

Mast Arm Hangers Aluminum

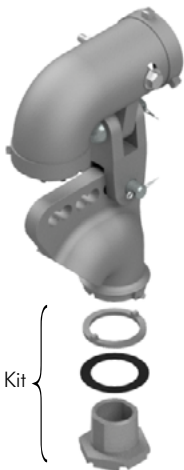
Pelco's aluminum Mast Arm Hanger are for mounting traffic signal assemblies on the end of a mast arm. Free-swinging styles are available with a cast nipple or all thread. Provided with hardware for mounting to a 2-3/8" diameter tenon.



Free-Swinging Mast Arm Hanger, Alum 1-1/2" NPS w/ Hardware

SE-3103 - - -

Insulator Bushing	Stainless Bushing	Coating
Blank=None IB=Insulator Bushing	Blank=None SB=Stainless	PNC=Process No Color P__=Paint



SE-3042
Hardware Kit

Free-Swinging Mast Arm Hanger Assy, Alum w/ Outlet Body & Cast Nipple

SE-3201 - - -

Stainless Bushing	Stainless Upgrade	Coating
Blank=None SB=Stainless Bushing	Blank=None SB=Stainless	PNC=Process No Color P__=Paint



Free-Swinging Mast Arm Hanger Assy, Alum w/ Outlet Body & All Thread Nipple

SE-3314 - - -

Stainless Bushing	Stainless Upgrade	Coating
Blank=None SB=Stainless Bushing	Blank=None SB=Stainless	PNC=Process No Color P__=Paint

Note: 1. All assemblies are supplied standard with stainless steel slotted washers and fasteners, with galvanized hardware on outlet body. Stainless upgrade shall include stainless steel hardware and pins.
3. See Reference Section for available paint colors.



Mast Arm Hangers Bronze

Pelco's bronze Mast Arm Hanger, for mounting traffic signal assemblies on the end of a mast arm, is designed with serrations for locking onto the top of a signal. Provided with hardware for mounting to a 2-3/8" diameter tenon.



Ell Assy, Rigid Tenon Mount, Bronze 1-1/2" NPS w/ Hardware

SE-4412 - Coating
 PNC=Process No Color
 P__=Paint

Note: 1. All assemblies are supplied standard with stainless steel fasteners.
 2. See Reference Section for available paint colors.

