

# Aluminum Pipe Fittings



## Elbow, Serrated, 1-1/2" NPS, Alum

SE-0457 -  Ports -  Coating  
 SOE=Slip 1 End PNC=Process No Color  
 P\_\_=Paint



## Elbow, Serrated, 1-1/2" NPS w/ Tri-Stud Adapter, Alum

SE-0514 -  Coating  
 PNC=Process No Color  
 P\_\_=Paint



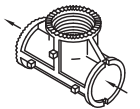
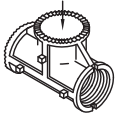
## Elbow, Serrated, 1-1/2" NPS w/ Tri-Bolt Adapter, Alum

SE-0501 -  Coating  
 PNC=Process No Color  
 P\_\_=Paint



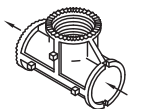
## Tee, Serrated, 1-1/2" NPS, Alum

SE-0458 -  Ports -  Coating  
 SOE=Slip 1 End PNC=Process No Color  
 SBE=Slip Both Ends P\_\_=Paint



## Tee, Serrated, 1-1/2" NPS, Horizontal Slip, Alum

SE-0474 -  Coating  
 PNC=Process No Color  
 P\_\_=Paint



Note: 1. All assemblies are supplied standard with stainless steel fasteners.  
 2. Double set screw option available. Specify by including -DS in the part number, i.e., SE-0474-DS-PNC.  
 3. See Reference Section for available paint colors.

# Aluminum Pipe Fittings



## Tee, Serrated, 1-1/2" NPS w/ Tri-Stud Adapter, Alum

SE-0513 -  Coating  
 PNC=Process No Color  
 P\_\_=Paint



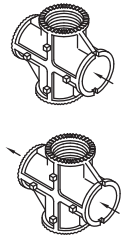
## Tee, Serrated, 1-1/2" NPS w/ Tri-Bolt Adapter, Alum

SE-0500 -  Coating  
 PNC=Process No Color  
 P\_\_=Paint



## Cross, Serrated, 1-1/2" NPS, Alum

SE-4038 -  Ports -  Coating  
 SOE=Slip 1 End PNC=Process No Color  
 SBE=Slip Both Ends P\_\_=Paint



## Center Support, 3-Way, 1-1/2" NPS, Alum

SE-0310 -  Coating  
 PNC=Process No Color  
 P\_\_=Paint



## Center Support, 4-Way, 1-1/2" NPS, Alum

SE-0305 -  Ports -  Coating  
 SOE=Slip 1 End PNC=Process No Color  
 P\_\_=Paint



Note: 1. All assemblies are supplied standard with stainless steel fasteners.  
 2. Double set screw option available. Specify by including -DS in the part number, i.e., SE-0513-DS-PNC.  
 3. See Reference Section for available paint colors.

# Iron Pipe Fittings



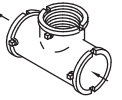
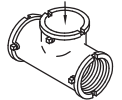
## Elbow, 1-1/2" NPS, Iron

SE-4091 -  Ports -  Coating  
 SOE=Slip 1 End GLV=Galvanized  
 P\_\_=Paint



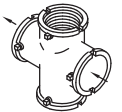
## Tee, 1-1/2" NPS, Iron

SE-4092 -  Ports -  Coating  
 SOE=Slip 1 End GLV=Galvanized  
 SBE=Slip Both Ends P\_\_=Paint



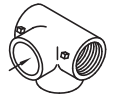
## Cross, 1-1/2" NPS, Iron

SE-4093 -  Ports -  Coating  
 SOE=Slip 1 End GLV=Galvanized  
 SBE=Slip Both Ends P\_\_=Paint



## Side Outlet Tee, 1-1/2" NPS, Iron

SE-0437 -  Ports -  Coating  
 SOE=Slip 1 End GLV=Galvanized  
 N=Notched P\_\_=Paint



## Center Support, 2-Way, 1-1/2" NPS, Iron

SE-0495 -  Coating  
 P\_\_=Paint

Note: 1. Iron Fittings are not serrated. For serrations add serrated locking in aluminum or brass.  
 2. Double set screw option available. Specify by including -DS in the part number, i.e., SE-0495-DS-PNC.  
 3. See Reference Section for available paint colors.

# Iron Pipe Fittings



## Center Support, 3-Way, 1-1/2" NPS, Iron

SE-0482 -  Coating  
P\_\_=Paint

Note: Double set screws are standard.



## Center Support, 4-Way, 1-1/2" NPS, Iron

SE-0496 -  Coating  
P\_\_=Paint

Note: 1. Iron Fittings are not serrated. For serrations add serrated locking in aluminum or brass.  
2. Double set screw option available. Specify by including -DS in the part number, i.e., SE-0496-DS-PNC.  
3. See Reference Section for available paint colors.

## Span Wire



SE-0321-PNC **Span Wire Clamp, Alum w/ U-Bolts  
3/4" Wide Slot**

SE-4077-PNC **Span Wire Clamp, Alum w/ U-Bolts  
5/8" Wide Slot**

SE-3211-PNC **Span Wire Clamp, Alum w/ U-Bolts  
1/2" Wide Slot**

Note:  
Stainless bushing and/or stainless upgrade available.  
Specify by including -SB and/or -SS in the part number, i.e., SE-0321-SB-SS-PNC.



SE-4027-PNC **Span Wire Clamp, Alum w/ J-Bolts  
3/4" Wide Slot**

SE-4397-PNC **Span Wire Clamp, Alum w/ J-Bolts  
1/2" Wide Slot**

Note:  
Stainless bushing and/or stainless upgrade available.  
Specify by including -SB and/or -SS in the part number, i.e., SE-4027-SB-SS-PNC.



SE-0338-GLV **Span Wire Clamp, Iron w/ U-bolts  
1/2" Wide Slot**

Note:  
Specify stainless upgrade by including -SS in the part number, i.e., SE-0338-SS-PNC.



SE-0441-GLV **Span Wire Clamp, Iron w/ J-bolts  
1/2" Wide Slot**

Note:  
Specify stainless upgrade by including -SS in the part number, i.e., SE-0441-SS-PNC.

Note: 1. All assemblies are supplied standard with galvanized hardware on span wire clamps. Stainless upgrade shall include stainless steel hardware on span wire clamps.



SE-3217-PNC **Span Wire Clamp, Alum w/ J-Bolts  
Universal w/ 3/4" Wide Slot**

Note:  
Stainless bushing and/or stainless upgrade available.  
Specify by including -SB and/or -SS in the part number, i.e., SE-3217-SB-SS-PNC.



SE-3212-PNC **Span Wire Clamp, Alum w/ J-Bolts  
90° w/ wide 3/4" Slot**

Note:  
Stainless bushing and/or stainless upgrade available.  
Specify by including -SB and/or -SS in the part number, i.e., SE-3212-SB-SS-PNC.



SE-3213-PNC **Span Wire Clamp, Alum w/ J-Bolts  
Serrated**

Note:  
Specify stainless upgrade by including -SS in the part number, i.e., SE-3213-SS-PNC.

Note: 1. All assemblies are supplied standard with galvanized hardware on span wire clamps. Stainless upgrade shall include stainless steel hardware on span wire clamps.



### Wire Outlet Body, Iron w/ Grommet 1-1/2" NPS, 1/2" Wide Comb

SE-4118 -   
Coating  
P\_\_=Paint

### Wire Outlet Body, Alum w/ Grommet 1-1/2" NPS, 3/4" Wide Comb

SE-4117 -   
Coating  
PNC=Process No Color  
P\_\_=Paint

Note:  
Stainless bushing and/or double set screw available.  
Specify by including -SB and/or -DS in the part number, i.e., SE-4118-SB-DS-PNC.



### Wire Outlet Body, Alum w/ Grommet Tri-Stud, 3/4" Wide Comb

SE-0545 -   
Coating  
PNC=Process No Color  
P\_\_=Paint

Note:  
Specify stainless bushing by including -SB in the part number, i.e., SE-0545-SB-PNC.



### Wire Outlet Body, Alum w/ Grommet Tri-Stud Adjustable

SE-0523 -   
Coating  
PNC=Process No Color  
P\_\_=Paint

Note: 1. All assemblies are supplied standard with stainless steel fasteners.  
2. See Reference Section for available paint colors.



## Wire Outlet Body, Double, Alum Single Clevis Tri-Stud, 3/4" Wide Comb

SE-0531 -   
Coating  
PNC=Process No Color  
P\_\_=Paint

Note:  
Specify stainless bushing by including -SB in the part number, i.e., SE-0531-SB-PNC.



## Wire Outlet Body, Double, Alum Single Clevis 1-1/2" NPS, 3/4" Wide Comb

SE-4058 -   
Coating  
PNC=Process No Color  
P\_\_=Paint

Note:  
Stainless bushing and/or double set screw available.  
Specify by including -SB and/or -DS in the part number, i.e., SE-4058-SB-DS-PNC.



## Wire Outlet Body, Double, Alum Adjustable Tri-Stud

SE-0532 -   
Coating  
PNC=Process No Color  
P\_\_=Paint



## Wire Outlet Body, Double, Alum Multi Clevis Tri-Stud, 3/4" Wide Comb

SE-0558 -   
Coating  
PNC=Process No Color  
P\_\_=Paint

Note:  
Specify stainless bushing by including -SB in the part number, i.e., SE-0558-SB-PNC.



## Wire Outlet Body, Double, Iron Universal 1-1/2" NPS, 1/2" Wide Comb

SE-4155 -   
Coating  
P\_\_=Paint

Note:  
Stainless bushing and/or double set screw available.  
Specify by including -SB and/or -DS in the part number, i.e., SE-4155-SB-DS-PNC.

Note: 1. All assemblies are supplied standard with stainless steel fasteners.  
2. See Reference Section for available paint colors.

# Span Wire



## Hanger Body, Alum 1-1/2" NPS

SE-0530 -  Coating  
 PNC=Process No Color  
 P\_\_=Paint

Note:  
 Double set screw available.  
 Specify by including -DS in the part number, i.e., SE-0530-DS-PNC.



## Hanger Body, Alum Single-Stud

SE-0438 -  Coating  
 PNC=Process No Color  
 P\_\_=Paint



## Hanger Body, Alum Double Stud

SE-0516 -  Coating  
 PNC=Process No Color  
 P\_\_=Paint



## Hanger Body, Alum Tri-Stud

SE-0512 -  Coating  
 PNC=Process No Color  
 P\_\_=Paint

Note: 1. All assemblies are supplied standard with stainless steel fasteners.  
 2. See Reference Section for available paint colors.



## Clevis Adapter, Alum 1-1/2" NPS, 3/4" Clevis

SE-4030 -  Coating  
PNC=Process No Color  
P\_\_=Paint

Note:  
Stainless bushing and/or double set screw available.  
Specify by including -SB and/or -DS in the part number, i.e., SE-4030-SB-DS-PNC.



## Clevis Adapter, Alum 1-1/2" NPS, Double, 3/4" Wide Slot

AB-0316 -  Coating  
PNC=Process No Color  
P\_\_=Paint

Note:  
Stainless bushing and/or double set screw available.  
Specify by including -SB and/or -DS in the part number, i.e., AB-0316-SB-DS-PNC.



## Clevis Adapter, Alum Tri-Stud, 3/4" Wide Clevis

SE-4031 -  Coating  
PNC=Process No Color  
P\_\_=Paint

Note:  
Specify stainless bushing by including -SB in the part number, i.e., SE-4031-SB-PNC.



## Clevis Adapter, Alum Single Stud, 3/4" Wide Clevis

SE-0540 -  Coating  
PNC=Process No Color  
P\_\_=Paint

Note:  
Specify stainless bushing by including -SB in the part number, i.e., SE-0540-SB-PNC.



## Clevis Adapter, Alum Single Stud, 3/4" Wide Slot

SE-0630 -  Coating  
PNC=Process No Color  
P\_\_=Paint

Note:  
Specify stainless bushing by including -SB in the part number, i.e., SE-0630-SB-PNC.

Note: 1. All assemblies are supplied standard with stainless steel fasteners.  
2. See Reference Section for available paint colors.

# Span Wire



**Span Wire Adapter, Alum**  
**1-1/2" NPS, Stainless Bushing, 5/8" Clevis**

SE-0371 -  Coating  
 PNC=Process No Color  
 P\_\_=Paint



SE-0503-PNC **Tri-Stud Adapter, Alum**  
**1-1/2" NPS External Threads**



SE-0502-PNC **Tri-Bolt Adapter, Alum**  
**1-1/2" NPS External Threads**



**Tri-Stud Adapter, Alum**  
**1-1/2" NPS Internal Threads**

SE-0533 -  Coating  
 PNC=Process No Color  
 P\_\_=Paint



**Tri-Bolt Adapter, Alum**  
**1-1/2" NPS Internal Threads**

SE-4242 -  Coating  
 PNC=Process No Color  
 P\_\_=Paint

Note: 1. All assemblies are supplied standard with stainless steel fasteners.  
 2. See Reference Section for available paint colors.



## Disconnect Balancer, Iron 1-2/3" NPS, 1/2" Wide Comb

SE-0380 -   
Coating  
P\_\_=Paint



## Disconnect Balancer, Alum Tri-Stud, 3/4" Wide Comb

SE-0505 -   
Coating  
PNC=Process No Color  
P\_\_=Paint

Note:  
Specify stainless bushing by including -SB in the part number, i.e., SE-0505-SB-PNC.

Note: 1. All assemblies are supplied standard with stainless steel fasteners.  
2. See Reference Section for available paint colors.



## PAL Balance Adjuster, Pivot and Lock, Steel

SE-3219	-	Slot	-	Eyebolt	-	PNC
		0.50=1/2"		0.50=1/2"		
		0.75=3/4"		0.75=3/4"		

Note:  
Specify stainless upgrade by including -SS in the part number, i.e., SE-3219-0.50-0.50-SS-PNC.



## Balance Adjuster, Iron

SE-3108	-	Slot	-	Eyebolt	-	Coating
		0.50=1/2"		0.50=1/2"		GLV=Galvanized
		0.75=3/4"		0.75=3/4"		P__=Paint

Note:  
Specify stainless upgrade by including -SS in the part number, i.e., SE-3108-0.50-0.50-SS-GLV.

## Balance Adjuster, Brass

SE-3200	-	Slot	-	Eyebolt	-	Coating
		0.50=1/2"		0.50=1/2"		PNC=Process No Color
		0.75=3/4"		0.75=3/4"		P__=Paint

Note:  
Specify stainless upgrade by including -SS in the part number, i.e., SE-3200-0.50-0.50-SS-PNC.



## Balance Adjuster, Iron w/ Jam Nut & Lockwasher

SE-3191	-	Slot	-	Eyebolt	-	Coating
		0.50=1/2"		0.50=1/2"		GLV=Galvanized
		0.75=3/4"		0.75=3/4"		P__=Paint

Note:  
Specify stainless upgrade by including -SS in the part number, i.e., SE-3191-0.50-0.50-SS-PNC.

Note: 1. All assemblies are supplied standard with stainless steel fasteners and galvanized clevis pins. Stainless upgrade shall include stainless steel clevis pins.  
2. See Reference Section for available paint colors.



## Clevis Hanger, Alum 3/4" Hanger x 3/4" Clevis w/ Pins

SE-0467 -  Coating  
PNC=Process No Color  
P\_\_=Paint

Note:  
Stainless bushing and/or stainless upgrade available.  
Specify by including -SB and/or -SS in the part number, i.e., SE-0467-SB-SS-PNC.

## Clevis Hanger, Alum 3/4" Hanger x 1/2" Clevis w/ Pins

SE-0610 -  Coating  
PNC=Process No Color  
P\_\_=Paint

Note:  
Stainless bushing and/or stainless upgrade available.  
Specify by including -SB and/or -SS in the part number, i.e., SE-0610-SB-SS-PNC.

## Clevis-Clevis Hanger, Alum 3/4" x 1/2"

SE-0611 -  Coating  
PNC=Process No Color  
P\_\_=Paint

Note:  
Stainless bushing and/or stainless upgrade available.  
Specify by including -SB and/or -SS in the part number, i.e., SE-0611-SB-SS-PNC.



## Clevis-Clevis Hanger, Alum 3/4" x 3/4" w/ Pins

SE-0468 -  Coating  
PNC=Process No Color  
P\_\_=Paint

Note:  
Stainless bushing and/or stainless upgrade available.  
Specify by including -SB and/or -SS in the part number, i.e., SE-0468-SB-SS-PNC.

## Clevis-Clevis Hanger, Alum 1/2" x 1/2" w/ Pins

SE-0464 -  Coating  
PNC=Process No Color  
P\_\_=Paint

Note:  
Stainless bushing and/or stainless upgrade available.  
Specify by including -SB and/or -SS in the part number, i.e., SE-0464-SB-SS-PNC.

Note: 1. All assemblies are supplied standard with stainless steel fasteners and galvanized clevis pins. Stainless upgrade shall include stainless steel clevis pins.  
2. See Reference Section for available paint colors.



## Extender Connector Hanger, Alum 10-Hole

SE-0539 -   
Coating  
PNC=Process No Color  
P\_\_=Paint

Note:  
Specify stainless bushing by including -SB in the part number, i.e., SE-0539-SB-PNC



## Extender Connector Hanger, Alum 10-Hole Serrated

SE-0543 -   
Coating  
PNC=Process No Color  
P\_\_=Paint

Note:  
Specify stainless bushing by including -SB in the part number, i.e., SE-0543-SB-PNC.



## Extender Connector Hanger, Alum 2-Hole, 1/2" Width

SE-0508 -   
Coating  
PNC=Process No Color  
P\_\_=Paint

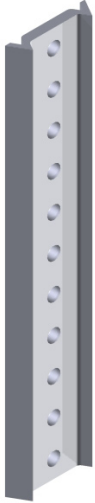
Note:  
Specify stainless bushing by including -SB in the part number, i.e., SE-0508-SB-PNC.

## Extender Connector Hanger, Alum 2-Hole, 3/4" Width

SE-0613 -   
Coating  
PNC=Process No Color  
P\_\_=Paint

Note:  
Specify stainless bushing by including -SB in the part number, i.e., SE-0613-SB-PNC.

Note: See Reference Section for available paint colors.



## Extender, Alum

SE-0507 -  -   
Length                      Coating  
11=11"                      PNC=Process No Color  
19=19"                      P\_\_=Paint  
40=40"  
72=72"

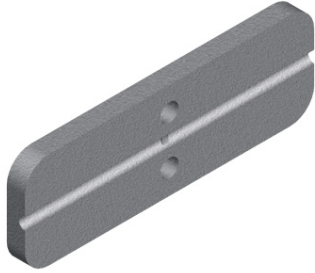


## Tri-Stud Hanger Body, Alum Adjustable 10-Hole

SE-0538 -   
Coating  
PNC=Process No Color  
P\_\_=Paint

Note: 1. All assemblies are supplied standard with stainless steel fasteners.  
2. See Reference Section for available paint colors.

# Span Wire



## Stabilizer Bar, Alum 2" x 6", 2-Hole

SE-0536 -   
Coating  
PNC=Process No Color  
P\_\_=Paint



## Stabilizer Block, Alum 2" x 6", 2-Hole

SE-0544 -   
Coating  
PNC=Process No Color  
P\_\_=Paint

Note: See Reference Section for available paint colors.

---

This page is intentionally left blank.



**COMPONENTS**

# Hubs & Mounting Brackets



## Hub Plate w/ Cable Guide, 1-1/2" NPS, Alum

SE-0444 -  Coating  
 PNC=Process No Color  
 P\_\_=Paint



## Hub Plate w/o Cable Guide, 1-1/2" NPS, Alum

SE-0445 -  Coating  
 PNC=Process No Color  
 P\_\_=Paint

## Hub Plate w/o Cable Guide, 1-1/2" NPS, Iron

SE-4124 -  Coating  
 P\_\_=Paint



## Hub Plate, Universal, 1-1/2" NPS, Alum w/ 15/16" Dia Hole in Rear

SE-4071 -  Coating  
 PNC=Process No Color  
 P\_\_=Paint

## Hub Plate, Universal, 1-1/2" NPS, Alum w/ 1-1/2" Dia Hole in Rear

SE-4108 -  Coating  
 PNC=Process No Color  
 P\_\_=Paint

Note: 1. All assemblies are supplied standard with stainless steel fasteners.  
 2. Double set screw option available. Specify by including -DS in the part number, i.e., SE-0444-DS-PNC.  
 3. See Reference Section for available paint colors.

# Hubs & Mounting Brackets



## Hub Plate, Flat Back, 1-1/2" NPS, Alum

SE-0415 -   
Coating  
PNC=Process No Color  
P\_\_=Paint



## Hub Plate, 4" Pipe, 1-1/2" NPS, Alum

SE-0454 -   
Coating  
PNC=Process No Color  
P\_\_=Paint



## Hub Plate, Large Pole, 1-1/2" NPS, Alum

SE-0357 -   
Coating  
PNC=Process No Color  
P\_\_=Paint

Note: 1. All assemblies are supplied standard with stainless steel fasteners.  
2. Double set screw option available. Specify by including -DS in the part number, i.e., SE-0415-DS-PNC.  
3. See Reference Section for available paint colors.



# Hubs & Mounting Brackets



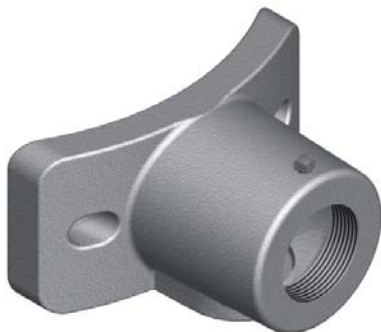
## Hub Plate, Narrow, 1-1/2" NPS, Alum

SE-4050 -  Coating  
PNC=Process No Color  
P\_\_=Paint



## Hub Plate, Single, 1-1/2" NPS, Alum

SE-0111 -  -  Coating  
0.563=9/16" PNC=Process No Color  
P\_\_=Paint



## Hub Plate, Wood Pole, Alum 1-1/2" NPS,

SE-4079 -  Coating  
PNC=Process No Color  
P\_\_=Paint

- Note: 1. All assemblies are supplied standard with stainless steel fasteners.  
2. Double set screw option available. Specify by including -DS in the part number, i.e., SE-4050-DS-PNC.  
3. See Reference Section for available paint colors.

# Hubs & Mounting Brackets



## Cabinet Mounting Bracket, Alum

SE-0425 -

Coating  
 PNC=Process No Color  
 P\_\_=Paint



## Sign Clamp, 4-1/2" OD Pole, Alum

SH-0214 -

Coating  
 PNC=Process No Color  
 P\_\_=Paint



## Adapter, 2-7/8" to 3-1/2" OD Pole, Alum

SE-4078 -

Coating  
 PNC=Process No Color  
 P\_\_=Paint



## Mounting Bracket, 4-1/2" OD Pole, Alum

SE-0104 -

Coating  
 PNC=Process No Color  
 P\_\_=Paint



## Mounting Hub, 1-1/2" NPS, 4-1/2" OD Pole, Alum

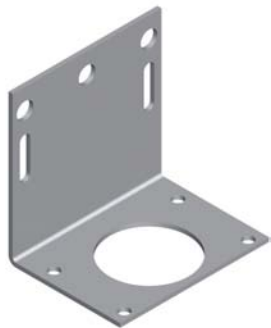
SE-0384 -

Coating  
 PNC=Process No Color  
 P\_\_=Paint

Note:  
 Double set screw available.  
 Specify by including -DS in the part number, i.e., SE-0384-DS-PNC.

Note: 1. All assemblies are supplied standard with stainless steel fasteners.  
 2. See Reference Section for available paint colors.

# Hubs & Mounting Brackets



**Cabinet Mounting Bracket, Alum**  
**4-1/2" x 3-3/8" x 4-1/2", 1/8"**

SE-0141 -   
Coating  
PNC=Process No Color  
P\_\_=Paint



**Cabinet Mounting Bracket, Alum**  
**4-1/2" x 3-3/8" x 2-7/8", 1/8"**

SE-0113 -   
Coating  
PNC=Process No Color  
P\_\_=Paint



**Cabinet Mounting Bracket, Alum**  
**6-3/4" x 3-1/2" x 2-1/16", 1/4"**

SE-0118 -   
Coating  
PNC=Process No Color  
P\_\_=Paint



**Cabinet Mounting Bracket, Alum**  
**6-3/4" x 4-1/2" x 2-1/16", 1/4"**

SE-0120 -   
Coating  
PNC=Process No Color  
P\_\_=Paint



**Cabinet Mounting Bracket, Alum**  
**6-3/4" x 6" x 2-1/16", 1/4"**

SE-0126 -   
Coating  
PNC=Process No Color  
P\_\_=Paint

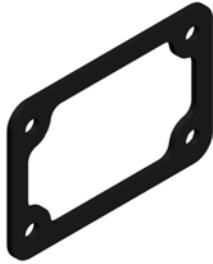
Note: See Reference Section for available paint colors.

## Hubs & Mounting Brackets

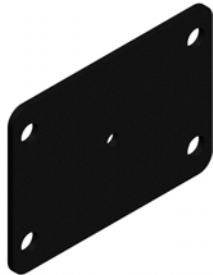


**Closure Plate, Alum  
Flasher Cabinet**

SE-0117 -  Coating  
 PNC=Process No Color  
 P\_\_=Paint



SE-0119-PNC **Hub Gasket, Closed Cell Sponge  
Flasher Cabinet**



SE-0148-PNC **Hub Gasket, Neoprene  
Flasher Cabinet**

---

This page is intentionally left blank.



**COMPONENTS**

# Slip Fitters



**Slip Fitter, 1-Way for 4-1/2" OD Pole, Alum**

SE-3106 -  Coating  
 PNC=Process No Color  
 P\_\_=Paint



**Slip Fitter, 1-Way Offset for 4-1/2" OD Pole, Alum**

SE-3107 -  Coating  
 PNC=Process No Color  
 P\_\_=Paint



**Slip Fitter, 1 & 2-Way for 4-1/2" OD Pole, Alum**

SE-3002 -  Coating  
 PNC=Process No Color  
 P\_\_=Paint

Note: 1. All assemblies are supplied standard with stainless steel fasteners.  
 2. See Reference Section for available paint colors.



**Slip Fitter, 3 & 4-Way for 4-1/2" OD Pole, Alum**

SE-3029 -   
Coating  
PNC=Process No Color  
P\_\_=Paint



**Slip Fitter, 1 & 2-Way for 4-1/2" OD Pole, Iron**

SE-3175 -   
Coating  
P\_\_=Paint



**Slip Fitter, 3 & 4-Way for 4-1/2" OD Pole, Iron**

SE-3176 -   
Coating  
P\_\_=Paint

Note: 1. All assemblies are supplied standard with stainless steel fasteners.  
2. See Reference Section for available paint colors.

# Tubes & Pipes



### Support Tube, 1-1/2" NPS, Alum

SE-0326 -  Length -  Coating

PNC=Process No Color  
P\_\_=Paint

### Support Tube, 2" NPS, Alum

SE-4370 -  Length -  Coating

PNC=Process No Color  
P\_\_=Paint

### Support Tube, 1-1/2" NPS, Steel

SE-0491 -  Length -  Coating

PNC=Process No Color  
P\_\_=Paint



### Pipe, 1-1/2", Sch 40, Alum

SE-0484 -  Length -  Coating

PNC=Process No Color  
P\_\_=Paint

### Pipe, 1-1/2", Sch 80, Alum

SE-0475 -  Length -  Coating

PNC=Process No Color  
P\_\_=Paint

### Pipe, 2", Sch 40, Alum

SE-0494 -  Length -  Coating

PNC=Process No Color  
P\_\_=Paint

### Pipe, 2", Sch 80, Alum

SE-4362 -  Length -  Coating

PNC=Process No Color  
P\_\_=Paint

Note: 1. Standard tubes and pipes are sold in 1 inch increments. For other lengths contacts sales.  
2. See Reference Section for available paint colors.



## Nipple, 1-1/2" NPS, Alum

SE-0436 -  Length -  Coating

PNC=Process No Color  
P\_\_=Paint

## Nipple, 1-1/2" NPS x 1-1/2" NPT, Alum

SE-4204 -  Length -  Coating

PNC=Process No Color  
P\_\_=Paint

## Nipple, 1-1/2" NPS, Steel

SE-0469 -  Length -  Coating

P\_\_=Paint

## Nipple, 1-1/2" NPT, Steel

SE-4200 -  Length -  Coating

P\_\_=Paint

Note: 1. Standard nipples are typically sold in 1 inch increments.  
For other lengths contact sales.  
2. See Reference Section for available paint colors.

## All Thread Nipple, 1-1/2" NPS, Alum

SE-0309 -  Length - PNC

02.13=2-1/8"  
02.5=2-1/2"  
03=3"  
04=4"  
04.5=4-1/2"  
05=5"  
06=6"



## All Thread Nipple, 1-1/2" NPS, Steel

SE-0492 -  Length - ZN1

02.13=2-1/8"  
02.5=2-1/2"  
03=3"  
04=4"  
04.5=4-1/2"  
05=5"  
06=6"

## Close Nipple, 1-1/2" NPS x 1-1/2" NPT, Steel

SE-4063 -  Length - ZN1

02.5=2-1/2"  
03=3"  
03.5=3-1/2"

## Octagonal Closure Cap, Alum 1-1/2" NPS x 1/2"

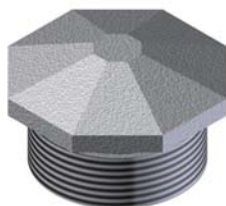
SE-4088 -

Coating

PNC=Process No Color

P\_\_=Paint

## Octagonal Closure Cap, Alum 1-1/2" NPS x 7/8"



SE-0361 -

Coating

PNC=Process No Color

P\_\_=Paint

## Octagonal Closure Cap, Alum 1-1/2" NPS x 1-3/8"

SE-0483 -

Coating

PNC=Process No Color

P\_\_=Paint

## Octagonal Closure Cap, Alum 1-1/2" NPS x 2"

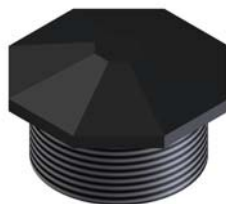
SE-0442 -

Coating

PNC=Process No Color

P\_\_=Paint

## Octagonal Closure Cap, Plastic 1-1/2" NPS x 7/8"



SE-0499 -

Coating

P01=Yellow

P02=Black

P05=New York State Green (forest)

P06=Automatic Green (dark olive)

P17=Platinum

Note: See Reference Section for available paint colors.

# Caps & Closures



**Fitting Cap, 1-1/2", Plastic**

SE-0304 -  Coating  
P01=Yellow  
P02=Black



**Fitting Cap, 1-1/4", Plastic**

SE-0419 -  Coating  
P01=Yellow  
P02=Black



AB-0271-PNC **Cap, CGB Closure, 3/4", Blue Plastic**



AB-0260-P02 **Tube Cap, Black Plastic**



SE-0479-PNC **Plug, 1-1/4" Sq Hd, Threaded, Plastic,**

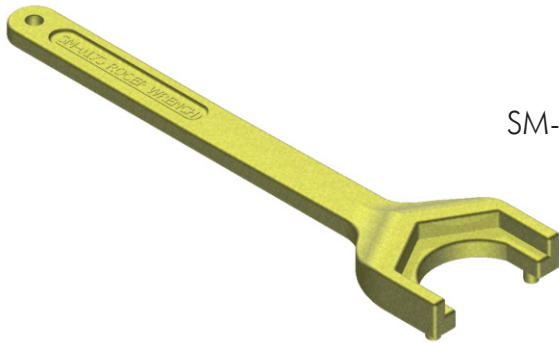


**Signal Closure Kit**

SE-3054 -  Coating  
P01=Yellow  
P02=Black  
P05=New York State Green (forest)  
P06=Automatic Green (dark olive)

Note: 1. All assemblies are supplied standard with stainless steel fasteners.

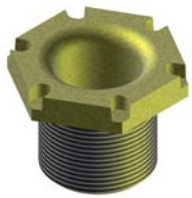
# Hardware



SM-0173-ZN2 **Roger Wrench w/ 10" Handle, Zinc 2**

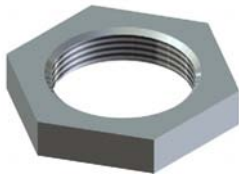


SE-0443-PNC **Hex Nipple, 1-1/2" NPS x 1-1/2" Lg, Alum**



SE-0435-ZN2 **Cast Nipple, 1-1/2" NPS x 1-1/2" Lg, Iron, Zinc 2**

SE-0644-ZN2 **Cast Nipple, 1-1/2" NPS x 1-3/4" Lg, Iron, Zinc 2**



SE-4017-ZN1 **Hex Nut, 1-1/2" NPS, Iron**



**Check Nut, 1-1/2" NPS, Alum**

SE-0448 -  - PNC

Set Screws

1S=Single Set Screw  
DS=Double Set Screw



**Check Nut, 1-1/2" NPS, Iron**

SE-0316 -  -

Set Screws

Coating

1S=Single Set Screw GLV=Galvanized  
DS=Double Set Screw ZN2=Zinc 2

Note: 1. All assemblies are supplied standard with stainless steel fasteners.  
2. See Reference Section for available paint colors.

# Hardware



SE-0360-PNC **Lockring, Serrated, Alum**



SE-4029-BRS **Lockring, Serrated, Brass**



SE-0451-PNC **Lockring, Double Serrated, Alum**



SE-4125-PNC **Conduit Locknut, 1-1/2" NPS,  
w/ Serrations, Zinc 1**



SE-4048-ZN1 **Conduit Locknut, 3/4" NPT, Zinc 1**

Note: 1. All assemblies are supplied standard with stainless steel fasteners.

## Hardware



SE-0375-SS **Slotted Washer, Stainless**



SE-0375-ZN2 **Slotted Washer, Zinc Plated**



SE-4113-SS **Washer, Stainless**  
**.39" ID x 2.44" OD x .06" THK**



SE-4061-SS **Washer,**  
**1.9" ID x 2.6" OD x .06" THK**



SE-4061-ZN2 **Washer,**  
**1.9" ID x 2.6" OD x .06" THK**



SE-0367-PNC **Washer, Nylon**  
**1.9" ID x 2.69" OD x .015" THK**



SE-0354-PNC **Gasket, Neoprene**

AB-0278-PNC **Gasket, Slotted Tri-Bolt, Neoprene**

Note: 1. All assemblies are supplied standard with stainless steel fasteners.

# Hardware



SE-0449-PNC **Grommet, 1-1/2" w/ Diaphragm Neoprene**



AB-0218-PNC **Adapter Ring, 3M, Alum**



SE-0477-PNC **ICC Ped Head Spacer, Alum**



SE-0471-GLV **Reducer Bushing, 1-1/2" NPT x 3/4" NPT, Galvanized Iron**

SE-0565-GLV **Reducer Bushing, 1-1/2" NPT x 1" NPT, Galvanized Iron**



SE-4011-PNC **Insulator Bushing, 1-1/2" NPS, Black Plastic**



SE-4028-ZN1 **CGB, 3/4", .55" to .65" Wire, Zinc 1**

SE-0490-ZN1 **CGB, 3/4", .55" to .75" Wire, Zinc 1**

SE-4216-ZN1 **CGB, 1", .55" to .65" Wire, Zinc 1**

# Hardware



## Notched Coupling, 1-1/2" NPS x 2", Alum

SE-0346 -  Coating  
 PNC=Process No Color  
 P\_\_=Paint



## Notched Coupling, 1-1/2" NPS x 2", Steel

SE-4170 -  Coating  
 GLV=Galvanized  
 P\_\_=Paint



## Notched Coupling, 1-1/2" NPS x 2" w/ Alum Lock Ring, Steel

SE-3254 -  Lock Ring  Coating  
 Blank=Alum GLV=Galvanized  
 BRS=Brass P\_\_=Paint

- Note: 1. All assemblies are supplied standard with stainless steel fasteners.  
 2. Double set screw option available. Specify by including -DS in the part number, i.e., SE-0346-DS-PNC.  
 3. See Reference Section for available paint colors.

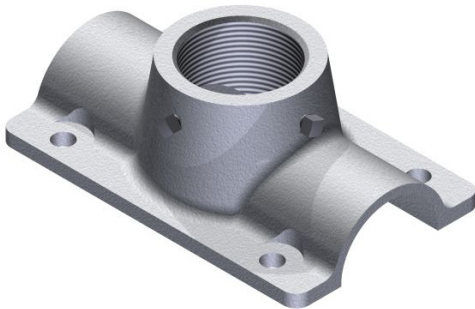


## Slip Connector, 1-1/2" NPS, Alum

SE-0535 -

Coating

PNC=Process No Color  
P\_\_=Paint

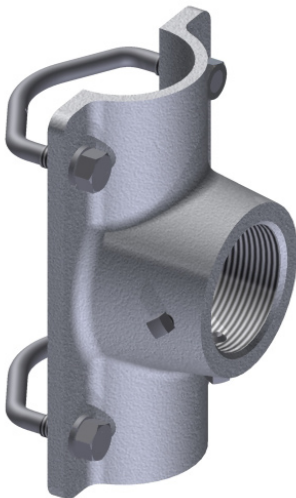


## Tube Saddle, 1-1/2" NPS, Alum

AB-0262 -

Coating

PNC=Process No Color  
P\_\_=Paint



## Tube Saddle Kit, 1-1/2" NPS w/ 5/16" V-Bolts & Hardware, Alum

AB-3048 -

Coating

PNC=Process No Color  
P\_\_=Paint

Note: 1. All assemblies are supplied standard with stainless steel fasteners.  
2. See Reference Section for available paint colors.

## Astro-Brac Hardware Kits



AB-0205-SS **Hardware Kit, 1-Way Arm,  
1/4"-20, Zinc Slotted Washer**



AB-0321-SS **Hardware Kit, 1-Way Arm,  
1/4"-20, Stainless Slotted Washer**



AB-0269-SS **Hardware Kit, CGB Arm,  
1/4"-20, Zinc Slotted Washer**



AB-0261-SS **Hardware Kit, OPS 1-Way,  
1/4"-20, 3M Adapter Ring**



AB-0304-SS **Hardware Kit, OPS 5-Section Cluster,  
1/4"-20, 3M Adapter Ring**



AB-0270-SS **Hardware Kit, 5-Section Cluster,  
1/4"-20, Zinc 2 Slotted Washer**



AB-0322-SS **Hardware Kit, 5-Section Cluster,  
1/4"-20, Stainless Slotted Washer**

Note: 1. All hardware kits are supplied standard with stainless fasteners (sizes 3/8" or less).

This page is intentionally left blank.

## Span Wire Hardware Kits



SE-5126-SS **Tri-Bolt Hardware Kit w/o Gasket, 5/16"-18  
Stainless Slotted Washer & Stainless Hardware**



SS-0398-SS **Tri-Bolt Hardware Kit w/ Gasket, 1/4"-20  
Zinc Slotted Washer & Stainless Hardware**



SE-4111-SS **Tri-Bolt Hardware Kit w/ Gasket, 1/4"-20  
Stainless Slotted Washer & Stainless Hardware**



SE-5064-SS **Single-Stud Hardware Kit, 5/16"-18  
Stainless Single Stud Washer & Stainless Hardware**



SE-3021-SS **Lower Assembly Kit, 1/4"-20  
Zinc Slotted Washer & Stainless Hardware**



SE-3227-SS **Lower Assembly Kit, 1/4"-20  
Stainless Slotted Washer & Stainless Hardware**



SE-3045-SS **Plumbizer Hardware Kit, 5/16"-18  
Zinc Slotted Washer & Stainless Hardware**

# Span Wire Hardware Kits



SE-5048-SS **Tri-Stud Hardware Kit w/ Gasket, 5/16"-18 Zinc Slotted Washer & Stainless Hardware**



SE-5123-SS **Tri-Stud Hardware Kit w/ Gasket, 5/16"-18 Stainless Slotted Washer & Stainless Hardware**



SE-5035-SS **Tri-Stud Hardware Kit w/o Gasket, 5/16"-18 Zinc Slotted Washer & Stainless Hardware**



SE-5122-SS **Tri-Stud Hardware Kit w/o Gasket, 5/16"-18 Stainless Slotted Washer & Stainless Hardware**



SE-5100-SS **Tri-Bolt Hardware Kit w/ Gasket, 5/16"-18 Zinc Slotted Washer & Stainless Hardware**



SE-5125-SS **Tri-Bolt Hardware Kit w/ Gasket, 5/16"-18 Stainless Slotted Washer & Stainless Hardware**



SE-5101-SS **Tri-Bolt Hardware Kit w/o Gasket, 5/16"-18 Zinc Slotted Washer & Stainless Hardware**

## Span Wire Hardware Kits



SE-3282-SS **Plumbizer Hardware Kit, 5/16"-18**  
**Stainless Slotted Washer & Stainless Hardware**



SE-3117-SS **Signal to Signal Mounting Kit, 5/16"-18**  
**Zinc Slotted Washer & Stainless Hardware**



SE-4112-SS **Signal to Signal Mounting Kit, 5/16"-18**  
**Stainless Slotted Washer & Stainless Hardware**



SE-2509-PNC **Tether Plate, L-Shaped, Alum**  
**w/ 5/16"-18 Hardware**

---

This page is intentionally left blank.



**COMPONENTS**

# Banding Products

## BANDING

Catalog Number	Width		Thickness		Weight	
	Inches	mm	Inches	mm	Lbs	Kg

### TYPE 201 STAINLESS STEEL - 100 Ft. Per Roll

US-8122-04	1/2	12.70	0.030	0.76	5.1	2.4
US-8122-05	5/8	15.88	0.030	0.76	6.4	3.0
US-8122-06	3/4	19.05	0.030	0.76	7.7	3.6

### TYPE 316 STAINLESS STEEL BAND - 100 Ft. Per Roll

US-8124-04	1/2	12.70	0.030	0.76	5.1	2.4
US-8124-05	5/8	15.88	0.030	0.76	6.4	3.0
US-8124-06	3/4	19.05	0.030	0.76	7.7	3.6

## HEAVY DUTY (HD) BANDING

Heavy Duty Band is available in type 201. HD Band is designed for heavy duty applications and 1-1/4", 201 stainless steel band has a breaking strength of approximately 5500 lbs. We recommend double wrapping for maximum strength.

Catalog Number	Width		Thickness		Weight	
	Inches	mm	Inches	mm	Lbs	Kg

### TYPE 201 HEAVY DUTY STAINLESS STEEL BAND - 100 Ft. Per Roll

US-8124-30	3/4	19.05	0.044	1.12	11.6	5.4
US-8124-31	1	25.40	0.044	1.12	13.7	6.4
US-8124-32	1-1/4	31.75	0.044	1.12	17.2	8.0

### BAND-STRAP .015" (.38mm) THICK - 200 - 300 Stainless Steel

Catalog Number	Width		Weight		Package Quantity
	Inches	mm	Lbs	Kg	

US-8121-34	1/2	12.70	2.9	1.3	100 Ft. Roll
US-8121-35	5/8	15.88	3.6	1.7	100 Ft. Roll
US-8121-36	3/4	19.05	4.4	2.0	100 Ft. Roll
US-8121-28	1/2	12.70	5.8	2.6	200 Ft. Roll
US-8121-29	5/8	15.88	7.3	3.2	200 Ft. Roll
US-8121-30	3/4	19.05	8.8	3.9	200 Ft. Roll



## BAND TOOL

The USA BAND TOOL is a forged double-plated tool capable of tensioning over 2400 lbs. The banding tool has a built-in cutter and a spring loaded gripper lever. The spin handle has a large retaining ring to keep the handle in place and can be used to hang on a tool belt.

Catalog Number	Description
----------------	-------------

US-8120-01	The USA Band Tool, Wt. 4.4 lbs (2.0 kg) - Package Quantity 1
US-8120-43	Close Quarter Tension Nut. Replaces tool tension handle when space is limited. Package Quantity 1
US-8120-06	Tension Screw/Handle kit - Package Quantity 1



## HEAVY DUTY BAND TOOL

The Heavy Duty TOOL must be used with all Heavy Duty Bands. The HD TOOL is 16-1/2 inches long and is capable of up to 6,000 lbs. of tensioning.

Catalog Number	Description
----------------	-------------

US-8121-10	The Heavy Duty Tool, Wt 11.7 lbs (5.3 Kg) - Package Quantity 1
------------	--

# Buckles

## BUCKLES

Catalog Number	Width		Weight	
	Inches	mm	Lbs	Kg

### TYPE 201 STAINLESS STEEL BUCKLES - Package Quantity 100

US-8122-54	1/2	12.70	2.1	1.0
US-8122-55	5/8	15.88	2.4	1.1
US-8122-56	3/4	19.05	3.7	1.7

### TYPE 316 STAINLESS STEEL BUCKLES - Package Quantity 100

US-8124-54	1/2	12.70	2.1	1.0
US-8124-55	5/8	15.88	2.4	1.1
US-8124-56	3/4	19.05	3.7	1.7

### GALVANIZED CARBON STEEL BUCKLES - Package Quantity 100

US-8123-54	1/2	12.70	2.1	1.1
US-8123-55	5/8	15.88	2.4	1.1
US-8123-56	3/4	19.05	3.7	1.7



## HEAVY DUTY BUCKLES

HD Buckles are offered in widths and metals to correspond to HD Band. Clamps may be double wrapped for extra strength.

Catalog Number	Width		Weight	
	Inches	mm	Lbs	Kg

### TYPE 201/301 STAINLESS STEEL - Package Quantity 25

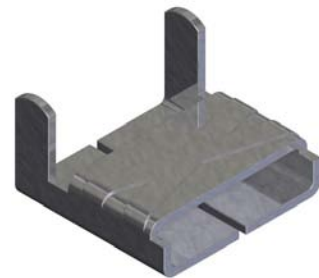
US-8124-40	3/4	19.05	1.8	0.8
US-8124-41	1	25.40	2.4	1.1
US-8124-42	1-1/4	31.75	3.2	1.4

## BAND CLIPS

Catalog Number	Width		Weight	
	Inches	mm	Lbs	Kg

### TYPE 201 STAINLESS STEEL BAND CLIPS - Package Quantity 100

US-8121-54	1/2	12.70	2.1	1.0
US-8121-55	5/8	15.88	2.4	1.1
US-8121-56	3/4	19.05	3.7	1.7



## A-SCREW LOCK BUCKLES - Stainless Steel

Catalog Number	Width		Weight		Package Quantity
	Inches	mm	Lbs	Kg	
US-8127-24	1/2	12.70	2.1	1.0	25
US-8127-25	5/8	15.88	2.4	1.1	25
US-8127-26	3/4	19.05	3.7	1.7	25



Width Inches	Thick	201		316		Thick	Force	Thick	Force	Thick	Force
		Force	Force	Force	Force						
1/2	0.030	1500	1200	0.015	600	0.020	850	0.025	1050	-	-
5/8	0.030	1875	1500	0.015	750	-	-	-	-	-	-

# Brackets

## SIGN MOUNTING BRACKETS

Catalog Number	Discription	Weight	
		Lbs	Kg
<b>1-BOLT STRAIGHT LEG BRACKET (.075" THICK) - Package Quantity 50</b>			
US-8121-00	Stainless Steel with SS Bolt, Washer and Fiber Washer	7.3	3.3
US-8120-04	Stainless Steel without Bolt or Washer		
US-8120-11	Zinc Plated Steel with Carbon Bolt, Washer and Fiber Washer	7.6	3.5
<b>1-BOLT FLARED LEG BRACKET (.075" THICK) - Package Quantity 50</b>			
US-8120-21	Stainless Steel with SS Bolt and Washer	7.6	3.5
US-8120-31	Zinc Plated Steel with Carbon Bolt, Washer and Fiber Washer	7.4	3.4



## BOLTS, WASHERS for BRACKETS - 50 Per Box

Catalog Number	Description
US-8120-02	Bolts Stainless Steel for Stainless Brackets (5/16 - 18 x 3/4" Long Hex Head)
US-8121-80	Bolts Zinc Plated Steel for Carbon Steel Brackets (5/16 - 18 x 3/4" Long Hex Head)
US-8120-03	Fiber Washers



## MOUNTING PLATES - Per Each - Secure with band and buckles.

Strapping holds this extruded aluminum mounting plate to utility poles.

Catalog Number	Description	Weight Lbs/Ea
US-8125-10	Light Duty, 1-1/2" x 4-3/4" w/ 5/8"-11 x 2" Plated Bolt	0.57
US-8125-12	Heavy Duty, 1-1/2" x 5-1/4" w/ 5/8"-11 x 2" Plated Bolt	0.78
US-8125-11	Heavy Duty, 1-1/2" x 5-1/4" w/ 5/8"-11 x 3" Plated Bolt	0.84
US-8125-13	Heavy Duty, 1-1/2" x 5-1/4" w/ 3/4"-11 x 3" Plated Bolt	1.22



## USA BOLT / CLAMP - Per Each

Extruded aluminum fittings with zinc plated bolt, nut and washer. To be used with USA Band for mounting pole hardware.

Catalog Number	Description	Weight Lbs/Ea
US-8500	Bolt/Clamp for use with 3/4" USA BAND band (US-8122-06). Includes plated nut, bolt 3/8" - 16 x 16" and washer.	0.43
US-8504	Bolt/Clamp for use with 1-1/4" USA BAND band (US-8124-62). Includes plated nut, bolt 5/8" - 11 x 8" and washer.	1.48

