

# GPL Geometrically Programmed Louvers

The Pelco GPL is a precisely aimed and controlled traffic signal louvering system. Drivers see a full circle of bright projected light when they are within the preset field of vision. The GPL is designed for quick easy installation. It is available as a complete assembly in a full circle visor that easily replaces the existing visor on most signals.



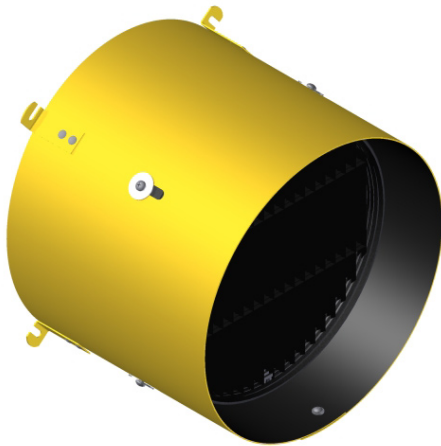
## GPL, Geometrically Programmed Louver, 12" w/o Visor

GL-1001 -  - PNC

Cut-Off

7=7°  
8=8°  
9=9°  
11=11°  
13=13°  
15=15°  
23.5=23.5°  
42=42°

## GPL, Geometrically Programmed Louver, 12" w/ Visor w/ Universal Clips



GL-1010 -  - UC -

Cut-Off

Coating

7=7°  
8=8°  
9=9°  
11=11°  
13=13°  
15=15°  
23.5=23.5°  
42=42°

P\_\_=Paint

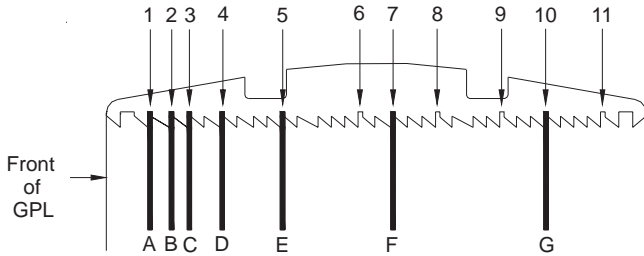
Note: 1. All assemblies are supplied standard with stainless steel fasteners.  
2. Universal Clips fit Eagle, Econolite, TCT, Mark IV, and McCain signals.  
3. See Reference Section for available paint colors.

# GPL View Angle Adjustments

The Pelco GPL is a precisely aimed and controlled traffic signal louvering system. Drivers see a full circle of bright projected light when they are within the preset field of vision. The GPL is designed for quick easy installation. It is available as a complete assembly in a full circle visor that easily replaces the existing visor on most signals.

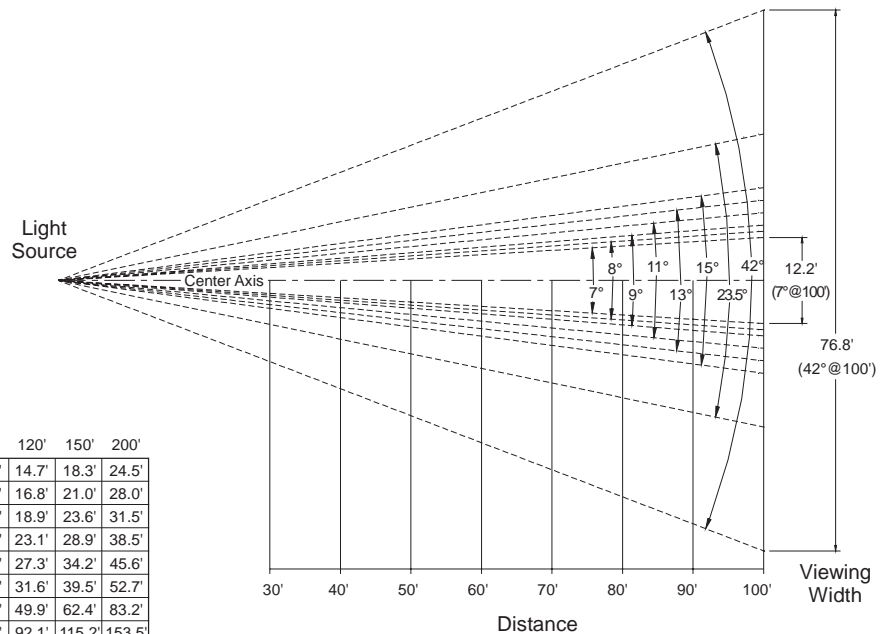


GPL Baffle Positions 1 thru 11



Baffles A thru G  
(Baffles shown in factory set position for 8°)

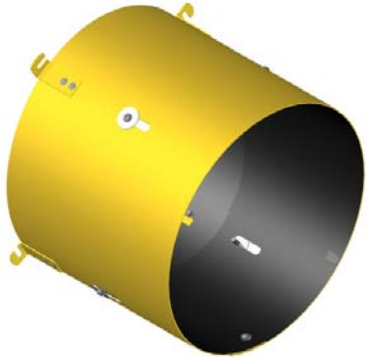
View Angle	Baffle Positions For GL-1010 GPL
7°	..... Move baffle "G" to #11 position
8°	..... All baffles in factory set position #1,2,3,4,5,7 & 10
9°	..... Move baffle "G" to #9 position
11°	..... Move baffle "G" to #8 position
13°	..... Omit baffle "G" completely
15°	..... Omit baffle "G" completely & move baffle "F" to #6 position
23½°	..... Omit baffle "F" & "G" completely
42°	..... Omit baffle "E", "F" & "G" completely



View Angle (Degrees)	Distance (Feet)									
	40'	50'	60'	70'	80'	90'	100'	120'	150'	200'
7°	4.9'	6.1'	7.3'	8.6'	9.8'	11.0'	12.2'	14.7'	18.3'	24.5'
8°	5.6'	7.0'	8.4'	9.8'	11.2'	12.6'	14.0'	16.8'	21.0'	28.0'
9°	6.3'	7.9'	9.4'	11.0'	12.6'	14.2'	15.7'	18.9'	23.6'	31.5'
11°	7.7'	9.6'	11.6'	13.5'	15.4'	17.3'	19.3'	23.1'	28.9'	38.5'
13°	9.1'	10.5'	13.7'	16.0'	18.2'	20.5'	22.8'	27.3'	34.2'	45.6'
15°	10.5'	13.2'	15.8'	18.4'	21.1'	23.7'	26.3'	31.6'	39.5'	52.7'
23°30'	16.6'	20.8'	25'	29.1'	33.3'	37.4'	41.6'	49.9'	62.4'	83.2'
42°	30.7'	38.4'	46.1'	53.7'	61.4'	69.1'	76.8'	92.1'	115.2'	153.5'

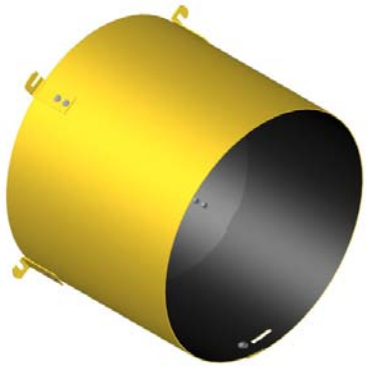
# Aluminum Signal Visors

Full circle and tunnel signal visors are supplied with a universal clip for attachment to signal. Black inside, federal yellow or black outside.



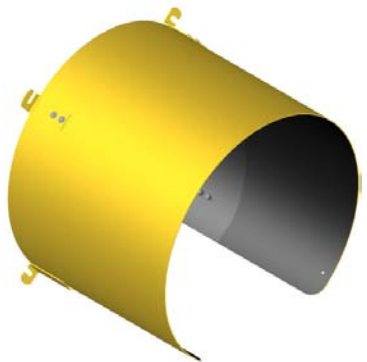
## Visor, Full Circle w/ Slots for 12" GPL w/ Universal Clips

SM-1028-UC -  Coating  
 P\_\_=Paint



## Visor, Full Circle w/o Slots for 12" Signal w/ Universal Clips

SM-1031-UC -  Coating  
 P\_\_=Paint



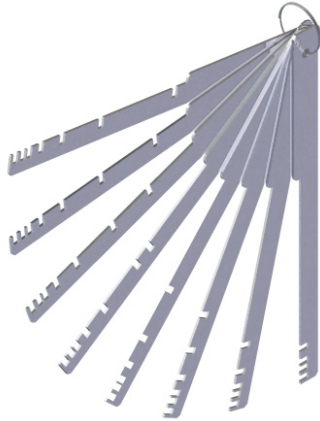
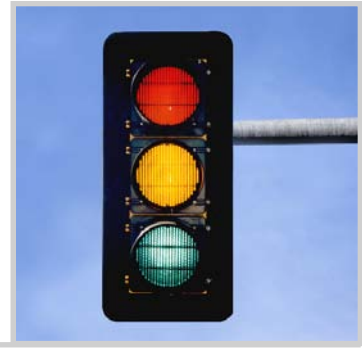
## Visor, Tunnel for 12" Signal w/ Universal Clips

SM-1034-UC -  Coating  
 P\_\_=Paint

Note: 1. All assemblies are supplied standard with stainless steel fasteners.  
 2. Universal Clips fit Eagle, Econolite, TCT, Mark IV, and McCain signals.  
 3. See Reference Section for available paint colors.

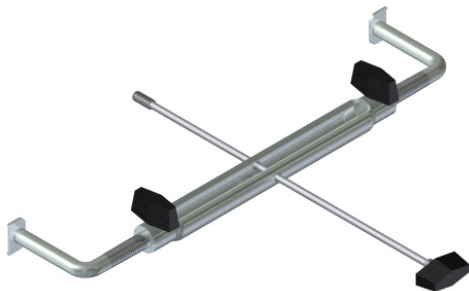
# Signal Accessories

The adjustment tool makes it easy to install and adjust a GPL in an existing visor. Pelco also provides a complete installation kit.



GL-1008-PNC

**GPL Combs,  
Set of 8 for Baffle Adjustments, Stainless**  
Includes 7°, 8°, 9°, 11°, 13°, 15°, 23 1/2°, 42°



GL-1002-PNC

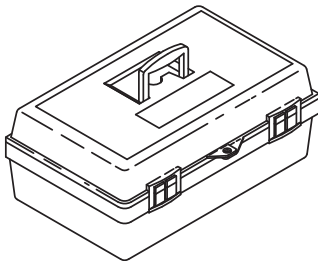
**Adjustment Tool, GPL w/ Depth Gauge**



GL-2001-PNC

**Installation Kit w/o Screw Gun**

Includes: visor marking template & sleeve, staedtler pen, 1/4" & 5/16" shock cord assy, and small tool box.



GL-2002-PNC

**Installation Kit w/ Screw Gun**

Includes: visor marking template & sleeve, staedtler pen, 1/4" & 5/16" shock cord assy, cordless Makita screw gun, w/ 5/16" magnetic socket, battery charger and large tool box.

# Confirmation Lights

Used to confirm a traffic signal is red when a car enters the intersection. Available in clear, red, or blue and various mounting applications.



## Confirmation Light Assy w/ Globe

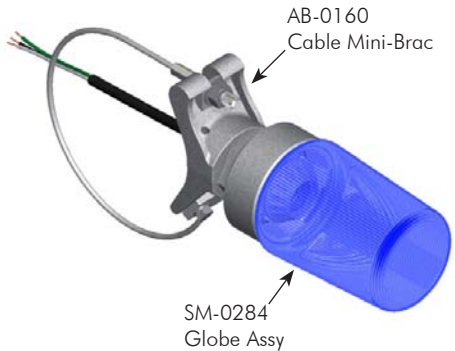
	Globe Color	-	Coating
SM-0284	-	<input type="text"/>	- <input type="text"/>
	CL=Clear RD=Red BL=Blue		PNC=Process No Color P__=Paint



## Confirmation Light Assy w/ Globe Band Mount Astro Mini-Brac

	Globe Color	-	Band Length	-	Coating
SM-0286	-	<input type="text"/>	-	<input type="text"/>	- <input type="text"/>
	CL=Clear RD=Red BL=Blue		29=29" Band 42=42" Band		PNC=Process No Color P__=Paint

Note:  
Specify stainless upgrade by including -SS in the part number, i.e., SM-0286-CL-29-SS-PNC.

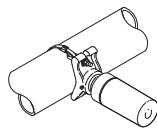


## Confirmation Light Assy w/ Globe Cable Mount Astro Mini-Brac

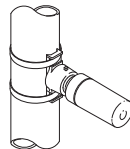
	Globe Color	-	Cable Length	-	Coating
SM-0321	-	<input type="text"/>	-	<input type="text"/>	- <input type="text"/>
	CL=Clear RD=Red BL=Blue		45=45" Cable 62=62" Cable 84=84" Cable		PNC=Process No Color P__=Paint

Note:  
Specify stainless upgrade by including -SS in the part number, i.e., SM-0321-CL-45-SS-PNC.

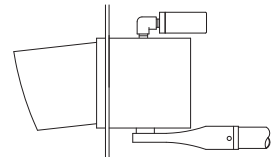
### Typical Applications:



Mast Arm Mount  
Astro-Mini-Brac



Side-of-Pole Mount  
Banded Narrow Hub



Plumbizer Mount

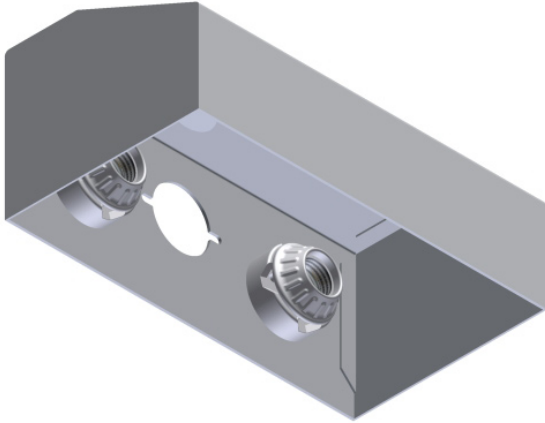
Note: 1. All assemblies are supplied standard with stainless fasteners and natural aluminum alodine coating. Stainless upgrade to include stainless steel clamp screw or stainless cable.  
2. See Reference Section for available paint colors.

# Down Light Assemblies

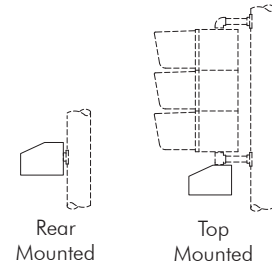
Incandescent down lights are supplied with or without a diffuser for various mounting applications.



## Incandescent Down Light, 12" x 6-3/4" x 5" w/o Diffuser

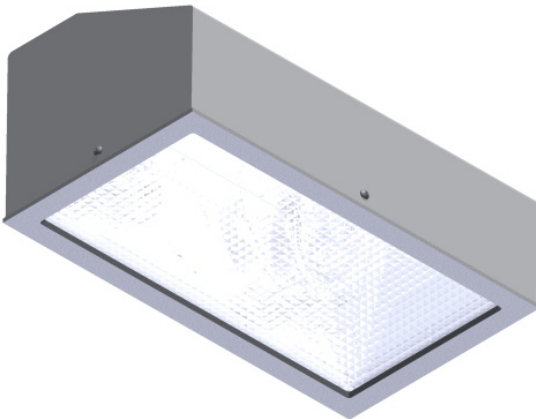


SM-1052 -  Coating  
 PNC=Process No Color  
 P\_\_=Paint

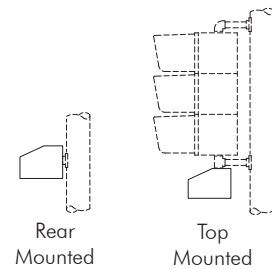


Note:  
 Required but not provided: (2) incandescent lamps, 67 watt 8000 hr

## Incandescent Down Light, 12" x 6-3/4" x 5" w/ Diffuser



SM-1053 -  Coating  
 PNC=Process No Color  
 P\_\_=Paint



Note:  
 Required but not provided: (2) incandescent lamps, 67 watt 8000 hr

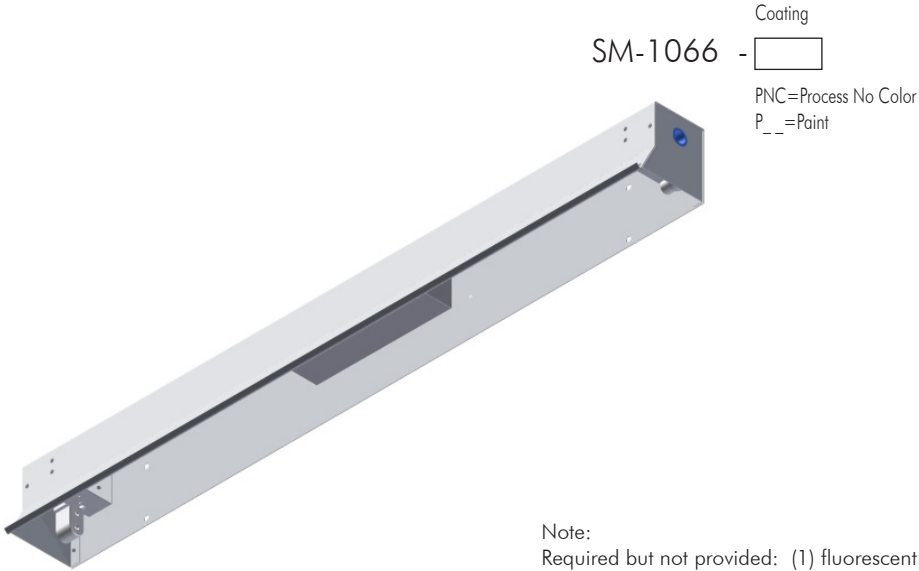
Note: 1. All assemblies are supplied standard with stainless fasteners.  
 2. See Reference Section for available paint colors.

# Down Light Assemblies

Pelco's fluorescent down light is supplied in a 48" length. A hanger strap assembly is available for mounting to a 1-1/2" pipe.

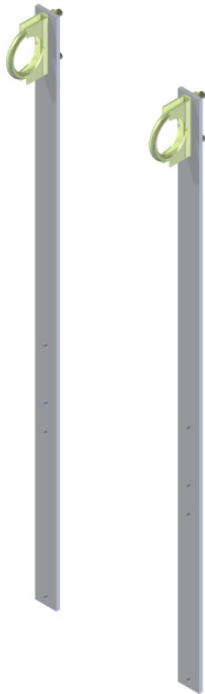


## Fluorescent Down Light, Aluminum, 48" x 4" x 5"



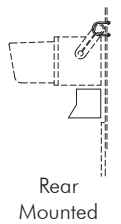
SM-1066 -  Coating  
 PNC=Process No Color  
 P\_\_=Paint

Note:  
 Required but not provided: (1) fluorescent tube, F36T12/CW



## Hanger Strap Assembly, Fluorescent Down Light, 1-1/2" Pipe Mount

SM-1022 -  Length -  Coating  
 26=26" Length PNC=Process No Color  
 30=30" Length P\_\_=Paint  
 36=36" Length



Note: 1. All assemblies are supplied standard with stainless fasteners.  
 2. See Reference Section for available paint colors.