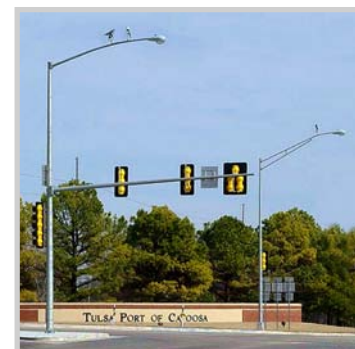


Ornamental Pole Top & Bases

Pelco's decorative pole top and bases help make the traffic signal aesthetically pleasing to the eye. Available for various pole diameters and multiple finish options.



Ornamental Pole Top, Cast Alum, 5-1/4" - 24-1/4" Diameter Pole (36" in Height)

PB-5315	-	Cap Size <input type="text"/>	-	Coating <input type="text"/>
		5.25 thru 24.25		PNC=Process No Color P__=Paint

Note:
Cap Size available in 1" increments.

Ornamental Pole Base, 4-Piece Cast Alum, 8" - 12" Diameter Pole (27" Footprint)

PB-5354	-	Pole Diameter <input type="text"/>	-	Trim Color <input type="text"/>	-	Coating <input type="text"/>
		8.00 thru 12.00		T__=Paint		PNC=Process No Color P__=Paint

Ornamental Pole Base, 4-Piece Cast Alum, 12" - 16" Diameter Pole (30" Footprint)

PB-5355	-	Pole Diameter <input type="text"/>	-	Trim Color <input type="text"/>	-	Coating <input type="text"/>
		12.00 thru 16.00		T__=Paint		PNC=Process No Color P__=Paint

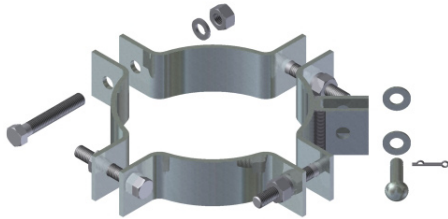
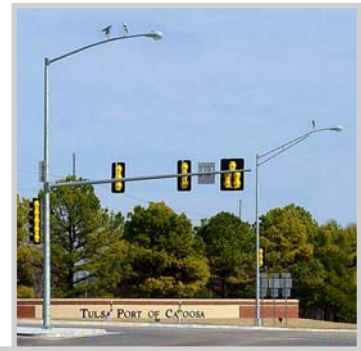
Ornamental Pole Base, 4-Piece Cast Alum, 18" - 26" Diameter Pole (40" Footprint)

PB-5381	-	Pole Diameter <input type="text"/>	-	Coating <input type="text"/>
		18.00 thru 26.00		PNC=Process No Color P__=Paint

Note: 1. All assemblies are supplied standard with stainless hardware.
2. Contact Pelco for a complete Ornamental product catalog.
3. See Reference Section for available paint colors.

Pole & Arm Clamps

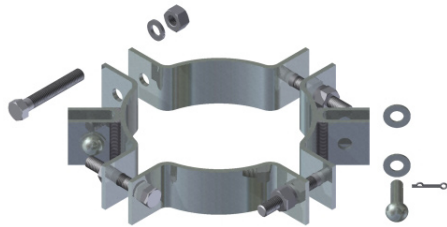
Pelco's strain pole clamps are available in various sizes and configurations from 1-way to 4-way. All clamps are hot dip galvanized per ASTM A-123.



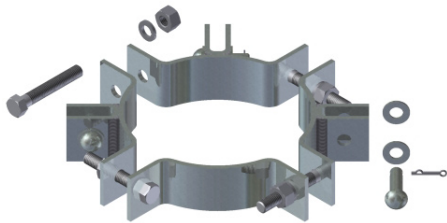
AP-1052-GLV **Strain Pole Clamp Assy, 1-Way**
5-1/2" - 7-1/2" Dia Pole, Steel

AP-1003-GLV **Strain Pole Clamp Assy, 1-Way**
7-1/2" - 10-1/2" Dia Pole, Steel

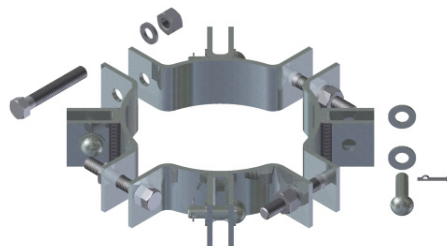
AP-1051-GLV **Strain Pole Clamp Assy, 1-Way**
10-1/2" - 13-1/2" Dia Pole, Steel



AP-1004-GLV **Strain Pole Clamp Assy, 2-Way**
7-1/2" - 10-1/2" Dia Pole, Steel



AP-1005-GLV **Strain Pole Clamp Assy, 3-Way**
7-1/2" - 10-1/2" Dia Pole, Steel



AP-1006-GLV **Strain Pole Clamp Assy, 4-Way**
7-1/2" - 10-1/2" Dia Pole, Steel

Note: All assemblies are supplied standard with galvanized hardware.

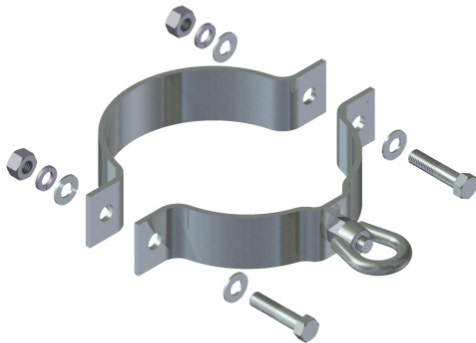
Pole & Arm Clamps

Pelco's strain pole clamps are available in various sizes and configurations from 1-way to 4-way. All clamps are hot dip galvanized per ASTM A-123.



AP-1053-GLV **Strain Pole Clamp Assy, 2-Piece w/ Eyelet
7-1/2" - 8-1/4" Dia Pole, Steel**

AP-1054-GLV **Strain Pole Clamp Assy, 2-Piece w/ Eyelet
8-1/4" - 8-3/4" Dia Pole, Steel**



AP-1055-GLV **Strain Pole Clamp Assy, 2-Piece w/ Eyelet
9" - 10" Dia Pole, Steel**

AP-1056-GLV **Strain Pole Clamp Assy, 2-Piece w/ Eyelet
10" - 11" Dia Pole, Steel**

AP-1072-GLV **Strain Pole Clamp Assy, 2-Piece w/ Eyelet
10-3/4" - 11-3/4" Dia Pole, Steel**

AP-1057-GLV **Strain Pole Clamp Assy, 2-Piece w/ Eyelet
12" - 13" Dia Pole, Steel**

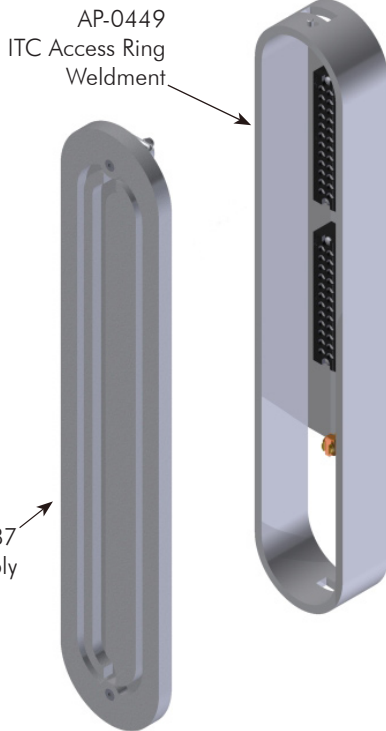
Note: All assemblies are supplied standard with galvanized hardware.

ITC Access Compartments

Pelco's ITC, Integral Terminal Compartment and Hand Hole, is an industry standard that has a low profile and unobstructed opening. Available with three terminal block options.

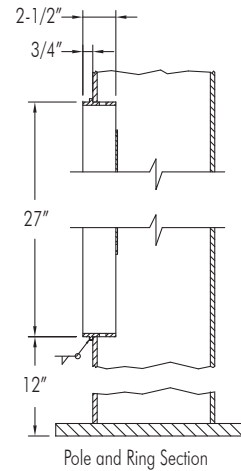


ITC Access Compartment, 3/8" x 4-3/4" x 27" w/ 12 Circuit

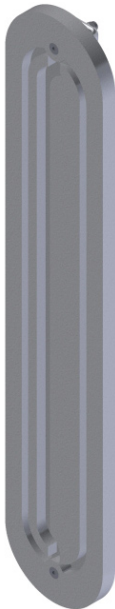


Terminal Block Coating
 AP-1083 - -

85A=Compression PNC=Process No Color
 65A=Compression P_ =Paint
 30A=Barrier Strip



AP-1087-PNC ITC Cover Assembly, Vacuum formed ABS



Note: 1. All assemblies are supplied standard with stainless steel fasteners.
 2. See Reference Section for available paint colors.

ITC Access Compartments

Pelco's ITC, Integral Terminal Compartment and Hand Hole, is an industry standard that has a low profile and unobstructed opening. Available with three terminal block options.



AP-1082-PNC **Terminal Block Assy, 85 Amp, 600V Compression Terminal Block w/ Hardware and Copper Ground Connector**

Note:
Terminal block conductor range for 85 Amp compression block option is 1-#18 thru 4-#10 per screw.



AP-1065-PNC **Terminal Block Assy, 65 Amp, 600V Compression Terminal Block w/ Hardware and Copper Ground Connector**

Note:
Terminal block conductor range for 65 Amp compression block option is 1-#18 thru 3-#12 per screw.



AP-1074-PNC **Terminal Block Assy, 30 Amp, 300V Terminal Strip Barrier Type w/ Hardware and Copper Ground Connector**



AP-1081-PNC **Double Fuse Block Kit, 600V, 3 Amp Fuse**



AP-1117-PNC **Double Fuse Block Kit, 600V, 10 Amp Fuse, Texas Spec**

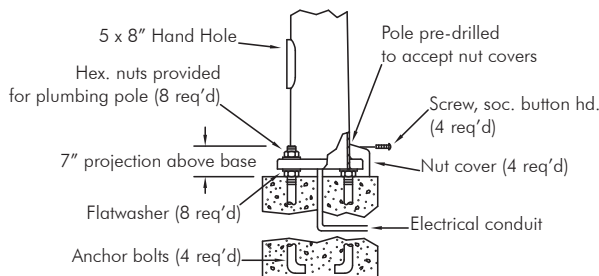
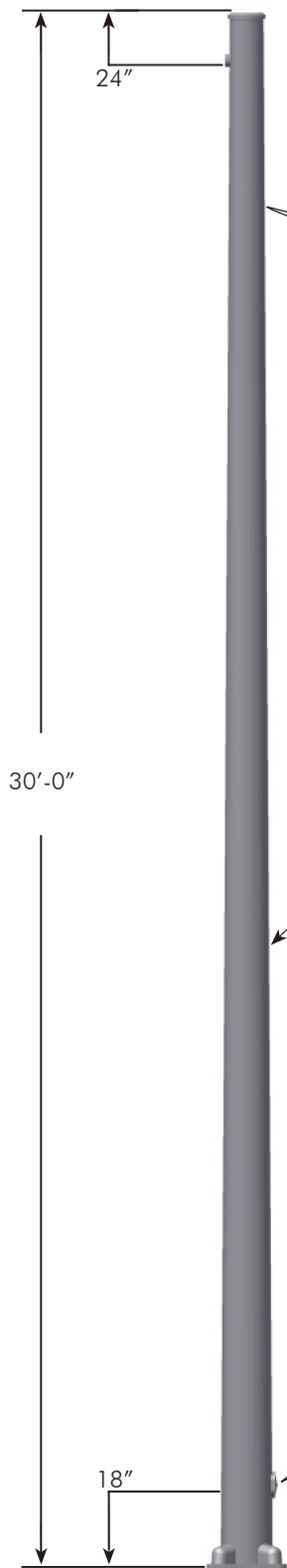
Note: All assemblies are supplied standard with stainless steel fasteners.

Typical Strain Pole

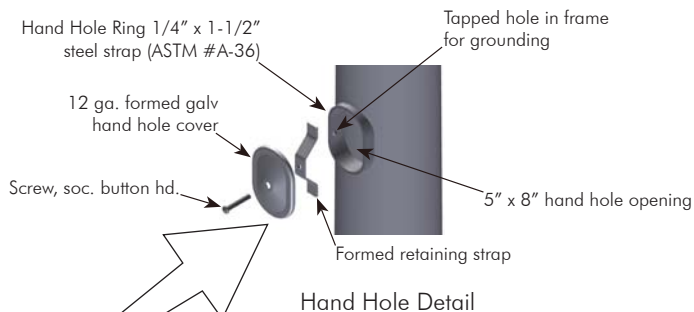
Pelco fabricates a variety of steel and aluminum mast arms and poles, ornamental or custom structures. Pelco offers numerous finishes from hot dip galvanized to powder coating. The strain pole clamp can be supplied in various sizes in 1-way thru 4-way options.

MATERIAL SPECIFICATIONS		
		GALV (IF REQUIRED)
POLE	ASTM A-595	ASTM A-123
POLE	ASTM A-36	ASTM A-123
MISC. PLATE & BAR	ASTM A-36	ASTM A-123
ANCHOR BOLT	A-36 MOD 55	ASTM A-153
ANCHOR BOLT NUT	ASTM A-563	ASTM A-153

- Note:
1. Hot dip galvanized after fabrication.
 2. Contact Pelco with specific requirements.



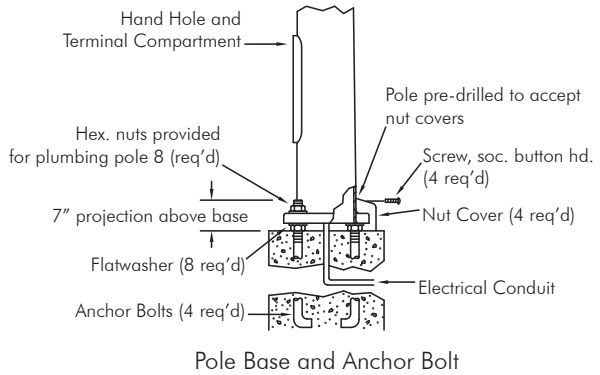
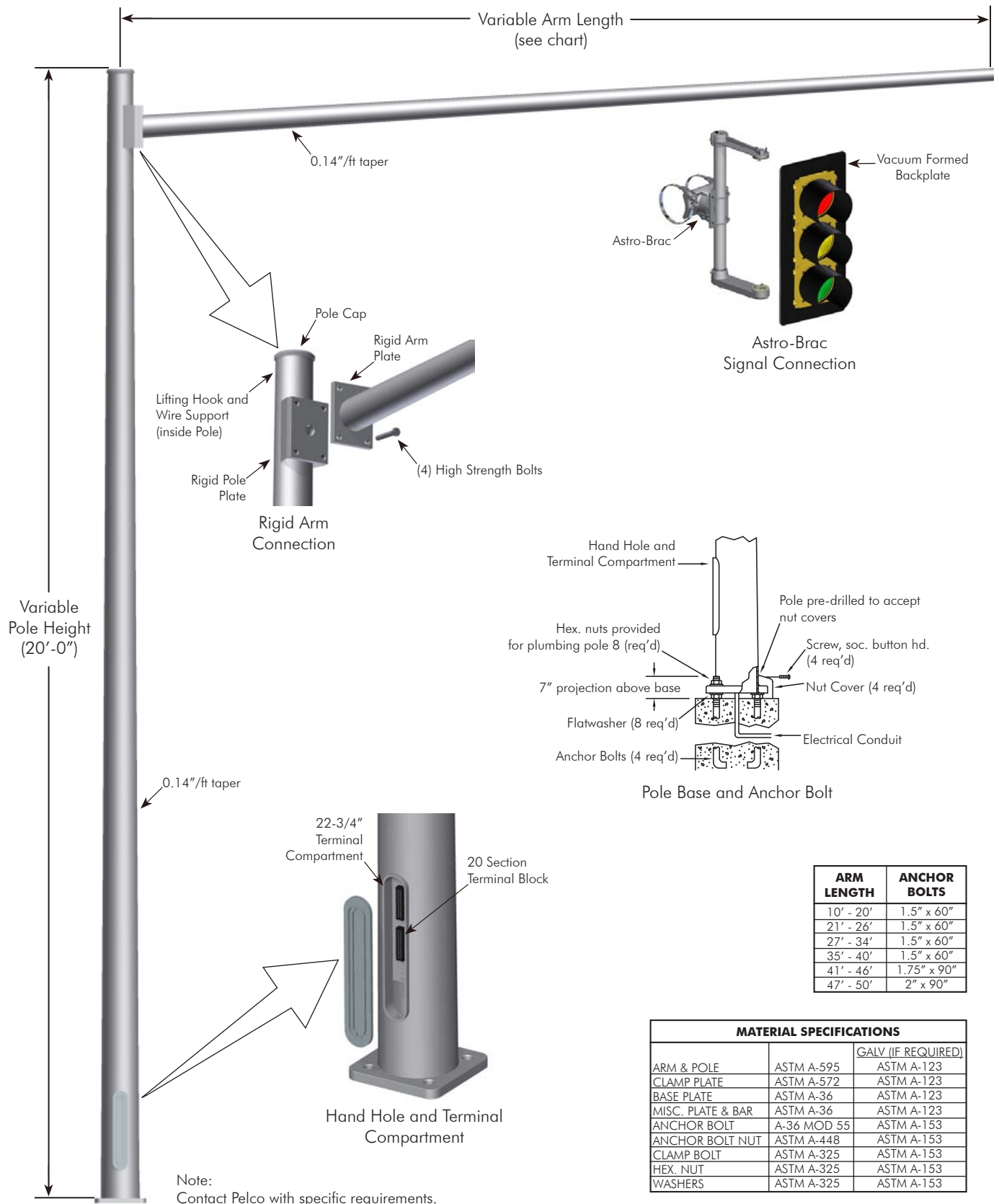
Pole Base and Anchor Bolt Detail



TUBE BUTT DIAMETER	ANCHOR BOLT
14"	2" x 90"
13"	1-3/4" x 90"
12"	1-1/2" x 60"

Typical Mast Arm & Pole

Pelco fabricates a variety of steel and aluminum mast arms and poles, ornamental or custom structures. Pelco offers numerous finishes from hot dip galvanized to powder coating. The ITC access compartment makes wiring and maintenance trouble free.



ARM LENGTH	ANCHOR BOLTS
10' - 20'	1.5" x 60"
21' - 26'	1.5" x 60"
27' - 34'	1.5" x 60"
35' - 40'	1.5" x 60"
41' - 46'	1.75" x 90"
47' - 50'	2" x 90"

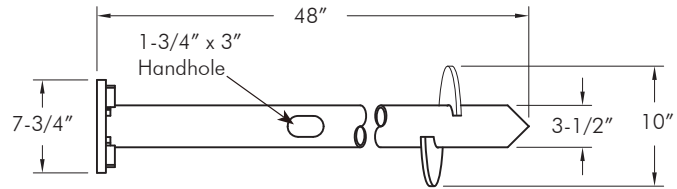
MATERIAL SPECIFICATIONS		
		GALV (IF REQUIRED)
ARM & POLE	ASTM A-595	ASTM A-123
CLAMP PLATE	ASTM A-572	ASTM A-123
BASE PLATE	ASTM A-36	ASTM A-123
MISC. PLATE & BAR	ASTM A-36	ASTM A-123
ANCHOR BOLT	A-36 MOD 55	ASTM A-153
ANCHOR BOLT NUT	ASTM A-448	ASTM A-153
CLAMP BOLT	ASTM A-325	ASTM A-153
HEX. NUT	ASTM A-325	ASTM A-153
WASHERS	ASTM A-325	ASTM A-153

Foundation Anchors

Pelco's foundation anchors feature a top plate which enables the bolt head to be inserted after the anchor is in place. This eliminates the necessity of digging under the plate to install base bolts. Plate scrapers loosen the soil for easy bolt installation from top of the plate. The bolt is held by the plate scraper which prevents it from turning.



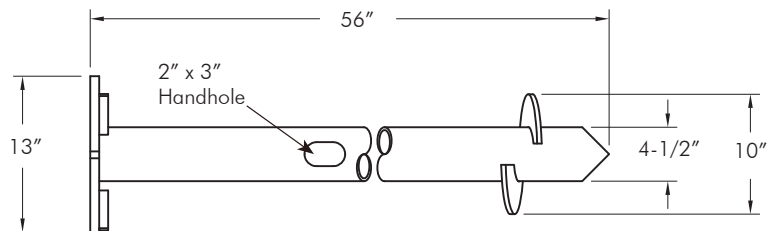
PB-5369-GLV **Foundation Anchor Assy, 3"**
4-1/2" to 6-1/2" Bolt Circle,
1/2"-13NC Hardware



Note:
 For residential, ornamental, and walkway lighting with small bases. (wt. 43 lbs.)



PB-5364-GLV **Foundation Anchor Assy, 4"**
7-3/4" to 14-3/4" Bolt Circle,
3/4"-10NC Hardware

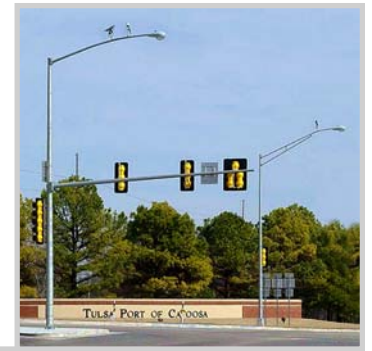


Note:
 For residential lights, parking lots, and street lights.
 Typically for pole heights up to 16'. (wt. 82 lbs.)

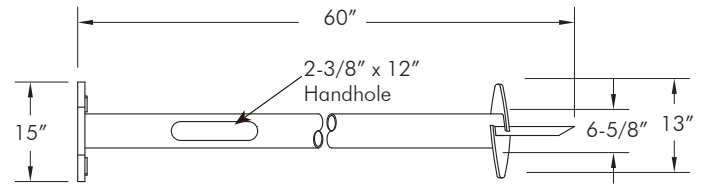
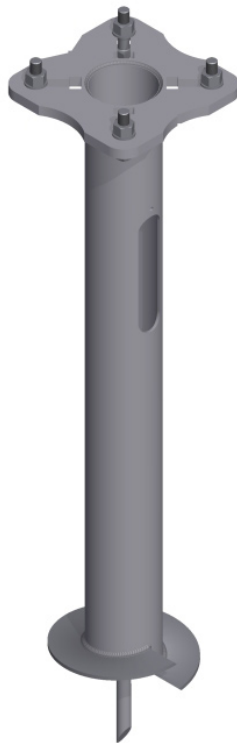
- Note: 1. Foundation anchors are hot dip galvanized per ASTM A-123.
 2. All assemblies are supplied with Grade 5 Galvanized Bolts.
 3. All assemblies with hardware are bagged in a nylon weatherproof bag.

Foundation Anchors

Pelco's foundation anchors feature a top plate which enables the bolt head to be inserted after the anchor is in place. This eliminates the necessity of digging under the plate to install base bolts. Plate scrapers loosen the soil for easy bolt installation from top of the plate. The bolt is held by the plate scraper which prevents it from turning.

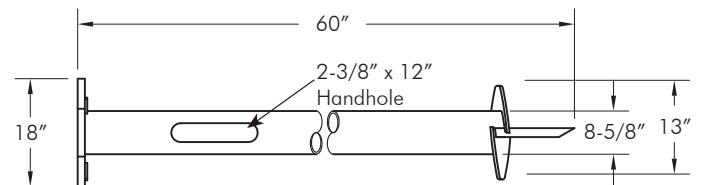


PB-5372-GLV Medium Foundation Anchor Assy, 6" Bolt Circle, 1"-8NC Hardware



Note:
For residential lights, parking lots, etc.
Typically for poles ranging from 20'-30' in height. (wt. 150 lbs.)

PB-5375-GLV Heavy Duty Foundation Anchor Assy, 8" Bolt Circle, 1-1/4"-7NC Hardware

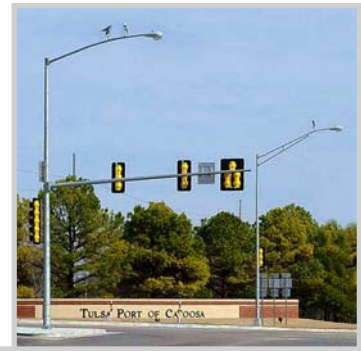


Note:
For street and highway lighting.
Typically for poles ranging from 30'-50' in height. (wt. 234 lbs.)

- Note: 1. Foundation anchors are hot dip galvanized per ASTM A-123.
2. All assemblies are supplied with Grade 5 Galvanized Bolts.
3. All assemblies with hardware are bagged in a nylon weatherproof bag.

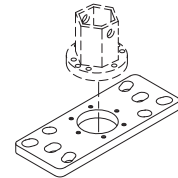
Foundation Anchors

Pelco's foundation anchors feature a top plate which enables the bolt head to be inserted after the anchor is in place. This eliminates the necessity of digging under the plate to install base bolts. Plate scrapers loosen the soil for easy bolt installation from top of the plate. The bolt is held by the plate scraper which prevents it from turning.



Driver Adapter for Foundation Anchor

PB-0604 -
 PNC=Process No Color
 P__=Paint



Note: Required to connect the Kelly Bar adapter to the foundation anchor for installation. Special hole pattern permits installation of foundation anchors having bolt circle diameters of 9" to 13".



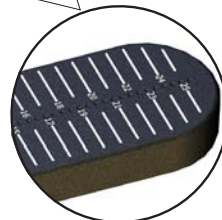
PB-0602 **Shim, Steel, 1/16" x 2" x 2"**

PB-0603 **Shim, Steel, 1/8" x 2" x 2"**



AP-3085-PNC **Anchor Bolt Template, ABS Plastic**

- Note:
- Quick, easy set-up in minutes
 - 41 different bolt circle patterns, 5-1/2" to 25-1/2"
 - Easy guide divots every 1/2"
 - Reusable

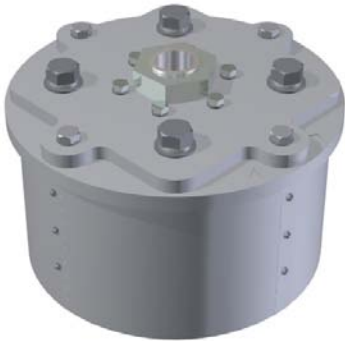


The Bolt Template is a reusable "tool" used for layout of bolts to be used in concrete for the future installation of poles. Constructed of UV stabilized ABS plastic, the Bolt Template may be used for various bolt patterns from 5-1/2" up to 25-1/2". Accepts multiple conduits through the center with the capacity for up to two 2" conduits and multiple smaller conduits at one time.

Note: See Reference Section for available paint colors.

Pivot Base

The purpose of the Pivot Base is to rotate a mast arm and pole assembly, complete with signals, from above the travel lanes to the shoulder of the roadway. Pelco's Pivot Base is designed to rotate approximately 270°, either clockwise or counterclockwise. The RAM Turning Tool is designed to facilitate the rotation.



Pivot Base Assy, 15" - 17" Bolt Circle 1-1/2" Anchor Bolts, Galvanized

AP-3071 - - GLV
 Bolt Circle
 15=15"
 16=16"
 17=17"

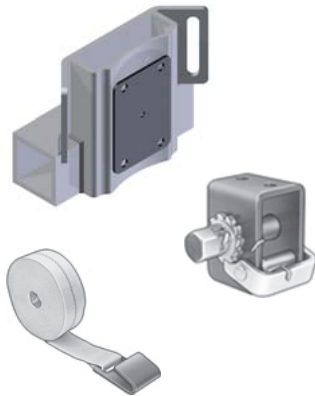
Pivot Base Assy, 15" - 17" Bolt Circle 1-1/4" Anchor Bolts, Galvanized

AP-3124 - - GLV
 Bolt Circle
 15=15"
 16=16"
 17=17"



Pivot Base Assy, 18" - 21" Bolt Circle, Galvanized

AP-3100 - - GLV
 Bolt Circle
 18=18"
 19=19"
 20=20"
 21=21"



RAM Turning Tool, Rotating Arm Mechanism for Pivot Base

AP-5106 - - Coating
 PNC=Process No Color
 P__=Paint



Note: 1. All assemblies are supplied standard with galvanized and stainless hardware.
 2. Specify bolt circle required when ordering.
 3. See Reference Section for available paint colors.