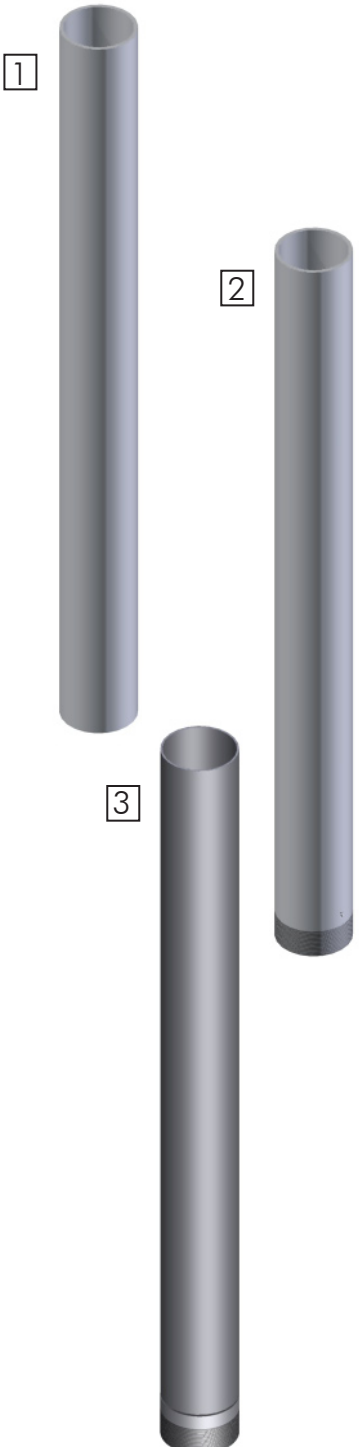


Pedestal Poles

Pelco offers aluminum, steel, and plastic bases in various sizes as well as poles in aluminum and steel. Pelco's cast aluminum square base is FHWA certified and meets or exceeds AASHTO break-away requirements. Plastic replacement doors offer an economical way to deter vandalism.



1. **Pedestal Pole, 4" Sch 40, Spun Alum No Threads**

PB-5101 - Length - Coating
 PNC=Process No Color
 P__=Paint

2. **Pedestal Pole, 4"- 8 NPT Sch 40, Spun Alum w/ Pelican ID**

PB-5100 - Length - Coating
 PNC=Process No Color
 P__=Paint

Pedestal Pole, 4"- 8 NPT Sch 80, Spun Alum

PB-5102 - Length - Coating
 PNC=Process No Color
 P__=Paint

Pedestal Pole, 4"- 8 NPT Sch 40, Steel

PB-5201 - Length - Coating
 P__=Paint

Pedestal Pole, 4"- 8 NPT Sch 40, Galv Steel

PB-5200 - Length - Coating - GLV -
 Blank=Galvanized Only
 P__=Paint over Galvanized

3. **Pedestal Pole, Welded, 4"- 8 NPT w/ 2-3/4" Nipple Length, Steel**

PB-5218 - Length - Coating
 GLV=Galvanized
 P__=Paint

Pedestal Pole, Welded, 4"- 8 NPT w/ 5-1/2" Nipple Length, Steel

PB-5219 - Length - Coating
 GLV=Galvanized
 P__=Paint

Note: 1. Standard poles are typically sold in 1 foot increments. For other lengths contact sales.
 2. See Reference Section for available paint colors.

Square Pedestal Bases Aluminum

Pelco offers aluminum, steel, and plastic bases in various sizes as well as poles in aluminum and steel. Pelco's cast aluminum square base is FHWA certified and meets or exceeds AASHTO break-away requirements. Plastic replacement doors offer an economical way to deter vandalism.



Square Base Assembly, Alum w/ Alum Door

PB-5334	-	<input type="checkbox"/>	-	<input type="checkbox"/>	-	<input type="checkbox"/>	-	<input type="checkbox"/>
		Door		Set Screws in Collar		Grounding Lug		Coating
		NL=No Logo Blank=Pelco Logo		1S=1 Hex Bolt 3S=3 Set Screws Blank=None		GL=Grounding Lug Blank=None		PNC=Process No Color P__=Paint

Square Base Assembly, Alum w/ Plastic Door

PB-5335	-	<input type="checkbox"/>	-	<input type="checkbox"/>	-	<input type="checkbox"/>	-	PNC
		Door		Set Screws in Collar		Grounding Lug		
		NL=No Logo Blank=Pelco Logo		1S=1 Hex Bolt 3S=3 Set Screws Blank=None		GL=Grounding Lug Blank=None		

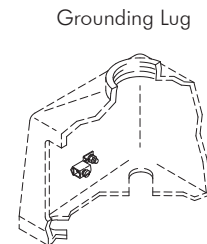
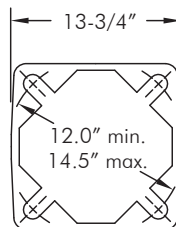
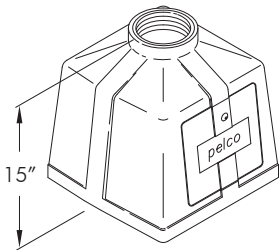


Square Base Assembly, Alum Heat Treated w/ Alum Door

PB-5336	-	<input type="checkbox"/>	-	<input type="checkbox"/>	-	<input type="checkbox"/>	-	<input type="checkbox"/>
		Door		Set Screws in Collar		Grounding Lug		Coating
		NL=No Logo Blank=Pelco Logo		1S=1 Hex Bolt 3S=3 Set Screws Blank=None		GL=Grounding Lug Blank=None		PNC=Process No Color P__=Paint

Square Base Assembly, Alum Heat Treated w/ Plastic Door

PB-5337	-	<input type="checkbox"/>	-	<input type="checkbox"/>	-	<input type="checkbox"/>	-	PNC
		Door		Set Screws in Collar		Grounding Lug		
		NL=No Logo Blank=Pelco Logo		1S=1 Hex Bolt 3S=3 Set Screws Blank=None		GL=Grounding Lug Blank=None		



- Note: 1. AASHTO Certified Square Aluminum Base: All Aluminum square bases above are available with AASHTO Certifications and FHWA approval. Please specify by adding the Certification Part No. C-1001 in addition to the base part number.
2. All assemblies are supplied standard with stainless fasteners.
3. See Reference Section for available paint colors.

Square Pedestal Bases Aluminum

Pelco offers aluminum, steel, and plastic bases in various sizes as well as poles in aluminum and steel. Pelco's cast aluminum square base is FHWA certified and meets or exceeds AASHTO break-away requirements. Plastic replacement doors offer an economical way to deter vandalism.



Square Base Assembly, Alum Steel Coupling w/ Alum Door

PB-5340	-	<input type="checkbox"/>	-	<input type="checkbox"/>	-	<input type="checkbox"/>	-	<input type="checkbox"/>
		Door		Set Screws in Collar		Grounding Lug		Coating
		NL=No Logo Blank=Pelco Logo		1S=1 Hex Bolt 3S=3 Set Screws Blank=None		GL=Grounding Lug Blank=None		PNC=Process No Color P__=Paint

Square Base Assembly, Alum Steel Coupling w/ Plastic Door

PB-5341	-	<input type="checkbox"/>	-	<input type="checkbox"/>	-	<input type="checkbox"/>	-	PNC
		Door		Set Screws in Collar		Grounding Lug		
		NL=No Logo Blank=Pelco Logo		1S=1 Hex Bolt 3S=3 Set Screws Blank=None		GL=Grounding Lug Blank=None		

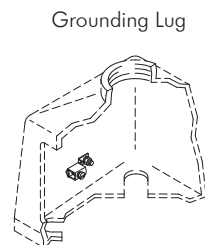
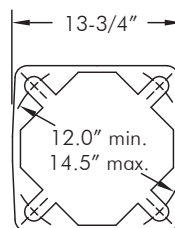
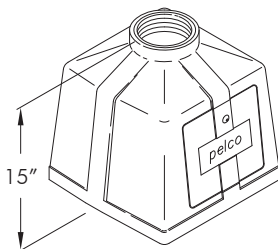
Square Base Assembly, Alum Slip Fit w/ Alum Door

PB-5338	-	<input type="checkbox"/>	-	<input type="checkbox"/>	-	<input type="checkbox"/>
		Door		Grounding Lug		Coating
		NL=No Logo Blank=Pelco Logo		GL=Grounding Lug Blank=None		PNC=Process No Color P__=Paint



Square Base Assembly, Alum Slip Fit w/ Plastic Door

PB-5339	-	<input type="checkbox"/>	-	<input type="checkbox"/>	-	PNC
		Door		Grounding Lug		
		NL=No Logo Blank=Pelco Logo		GL=Grounding Lug Blank=None		



- Note: 1. AASHTO Certified Square Aluminum Base: All Aluminum square bases above are available with AASHTO Certifications and FHWA approval. Please specify by adding the Certification Part No. C-1001 in addition to the base part number.
 2. All assemblies are supplied standard with stainless fasteners.
 3. See Reference Section for available paint colors.

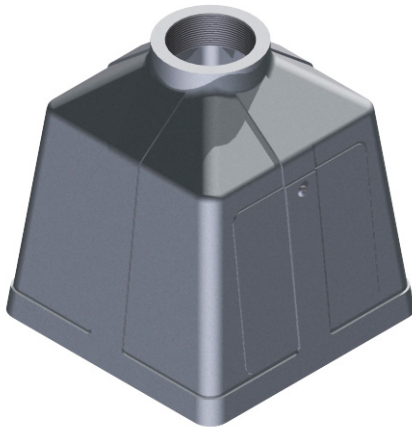
Square Pedestal Bases Iron

Pelco offers aluminum, steel, and plastic bases in various sizes as well as poles in aluminum and steel. Pelco's cast aluminum square base is FHWA certified and meets or exceeds AASHTO break-away requirements. Plastic replacement doors offer an economical way to deter vandalism.



Square Base Assembly, Iron w/ Iron Door

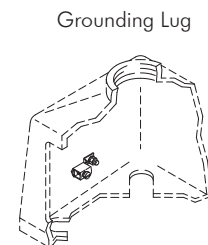
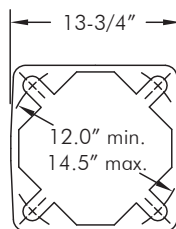
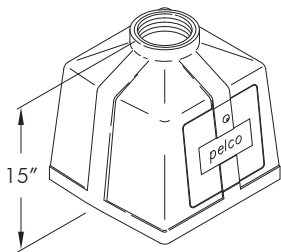
PB-5308	-	<input type="checkbox"/>	-	<input type="checkbox"/>	-	<input type="checkbox"/>
		Set Screws in Collar		Grounding Lug		Coating
		1S=1 Hex Bolt 3S=3 Set Screws Blank=None		GL=Grounding Lug Blank=None		GLV=Galvanized P__=Paint



Square Base Assembly, Iron w/ Iron Door

PB-5511	-	<input type="checkbox"/>	-	<input type="checkbox"/>	-	<input type="checkbox"/>
		Set Screws in Collar		Grounding Lug		Coating
		1S=1 Hex Bolt 3S=3 Set Screws Blank=None		GL=Grounding Lug Blank=None		GLV=Galvanized P__=Paint

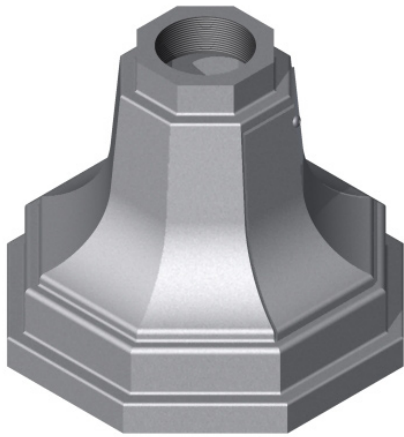
Note:
"Buy American" Certification available upon request at time of order.



Note: 1. All assemblies are supplied standard with stainless fasteners.
2. See Reference Section for available paint colors.

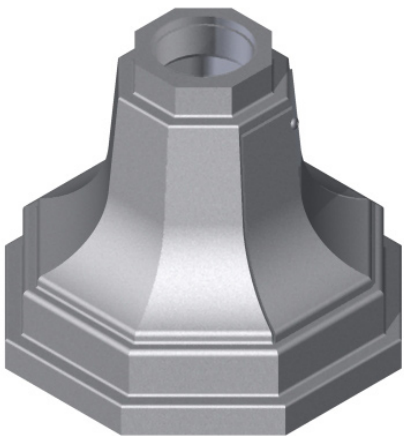
Octagonal Pedestal Bases Aluminum

Pelco offers aluminum, steel, and plastic bases in various sizes as well as poles in aluminum and steel. Pelco's cast aluminum square base is FHWA certified and meets or exceeds AASHTO break-away requirements. Plastic replacement doors offer an economical way to deter vandalism.



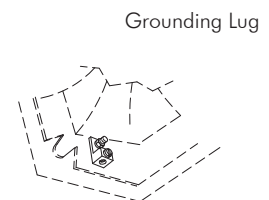
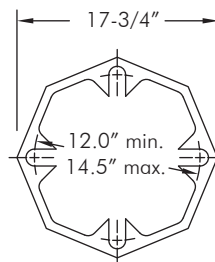
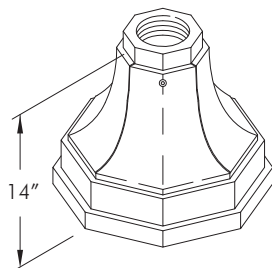
Octagonal Base Assembly, Alum w/ Alum Door

	Set Screws in Collar	-	Grounding Lug	-	Coating
PB-5349	<input type="checkbox"/>	-	<input type="checkbox"/>	-	<input type="checkbox"/>
	1S=1 Hex Bolt 3S=3 Set Screws Blank=None		GL=Grounding Lug Blank=None		PNC=Process No Color P__=Paint



Octagonal Base Assembly, Alum Slip Fit w/ Alum Door

	Grounding Lug	-	Coating
PB-5350	<input type="checkbox"/>	-	<input type="checkbox"/>
	GL=Grounding Lug Blank=None		PNC=Process No Color P__=Paint



Note: 1. All assemblies are supplied standard with stainless fasteners.
 2. See Reference Section for available paint colors.

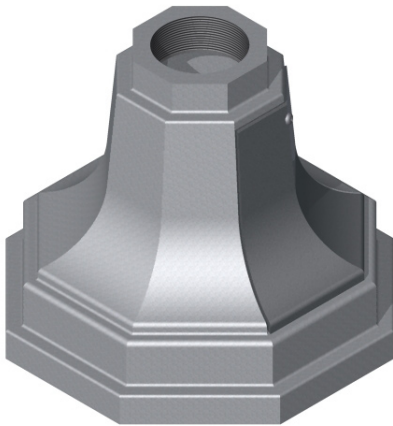
Octagonal Pedestal Bases Iron

Pelco offers aluminum, steel, and plastic bases in various sizes as well as poles in aluminum and steel. Pelco's cast aluminum square base is FHWA certified and meets or exceeds AASHTO break-away requirements. Plastic replacement doors offer an economical way to deter vandalism.



Octagonal Base Assembly, Iron w/ Iron Door

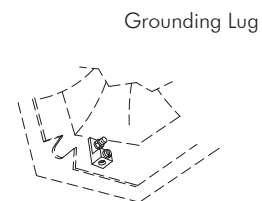
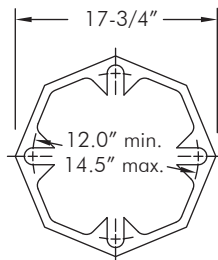
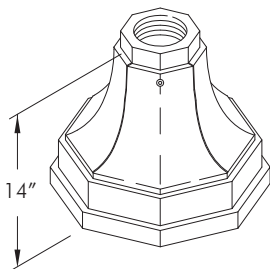
PB-5310	-	<input type="text"/>	-	<input type="text"/>	-	<input type="text"/>
		Set Screws in Collar		Grounding Lug		Coating
		1S=1 Hex Bolt 3S=3 Set Screws Blank=None		GL=Grounding Lug Blank=None		GLV=Galvanized P_ =Paint



Octagonal Base Assembly, Iron w/ Iron Door

PB-5512	-	<input type="text"/>	-	<input type="text"/>	-	<input type="text"/>
		Set Screws in Collar		Grounding Lug		Coating
		1S=1 Hex Bolt 3S=3 Set Screws Blank=None		GL=Grounding Lug Blank=None		GLV=Galvanized P_ =Paint

Note:
"Buy American" Certification available upon request at time of order.



Note: 1. All assemblies are supplied standard with stainless fasteners.
2. See Reference Section for available paint colors.

Pedestal Bases

Pelco offers aluminum, steel, and plastic bases in various sizes as well as poles in aluminum and steel. Pelco's cast aluminum square base is FHWA certified and meets or exceeds AASHTO break-away requirements. Plastic replacement doors offer an economical way to deter vandalism.



PB-5303-PNC 2-Piece Base for 4-1/2" OD Pole, Plastic

Note:
High Density Crosslinkable Polyethylene Pedestal Pole Base.
Complete with all hardware. No anchor bolts required.



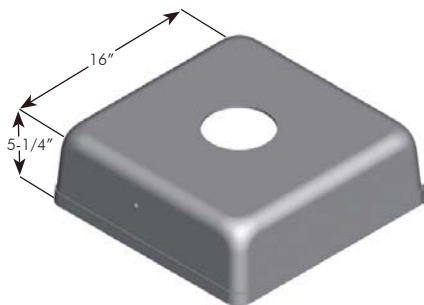
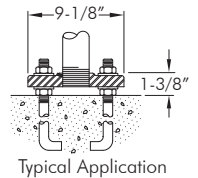
PB-5328-PNC 2-Piece Reducer, Alum

Note:
2-Piece Aluminum Reducer for PB-5303-PNC Base. (Reduces 4-1/2" OD to 3-1/2" OD)



PB-5304-GLV Flange Base, 4"-8NPT, Galv Iron

Note:
Heavy Duty Galvanized Iron Flange Base.
Three 13/16" mounting holes. On 7-1/4" bolt circle.



2-Piece Square Cover, Alum

	Pole		Coating
	Diameter		
PB-5399	-	<input type="checkbox"/>	-
		4,5=4,5" OD	PNC=Process No Color
		8=8" OD	P_ =Paint

Note:
2-Piece Aluminum Square Cover.
For 4-1/2" - 8" OD Pole (15" Max. Bottom Opening). Complete with all hardware.

Pole Caps

Pelco offers pole and arm caps in various sizes. Caps for 4-1/2" OD posts are available in both aluminum and ABS plastic.



Pole Cap, Acorn Type, Alum, 3" OD Pole

PB-5403 - Coating
PNC=Process No Color
P__=Paint



Pole Cap, Acorn Type, Alum, 3-1/2" OD Pole

PB-5407 - Coating
PNC=Process No Color
P__=Paint

Pole Cap, Acorn Type, Alum, 4-1/2" OD Pole

PB-5401 - Coating
PNC=Process No Color
P__=Paint



Pole Cap, Dome Type, Alum, 4-1/2" OD Pole

PB-5402 - Coating
PNC=Process No Color
P__=Paint

Note: 1. All assemblies are supplied standard with stainless fasteners.
2. See Reference Section for available paint colors.

Pole & Arm Caps Aluminum

Pelco offers pole and arm caps in various sizes. Caps for 4-1/2" OD posts are available in both aluminum and ABS plastic.



Pole & Arm Cap, Alum



2-5/16" to 3-1/2" OD Pole	AP-0101	-	Coating <input type="text"/> PNC=Process No Color P__=Paint
3" to 4" OD Pole	AP-0102	-	Coating <input type="text"/> PNC=Process No Color P__=Paint
4-3/16" to 5-3/16" OD Pole	AP-0103	-	Coating <input type="text"/> PNC=Process No Color P__=Paint
5-3/16" to 6-3/16" OD Pole	AP-0104	-	Coating <input type="text"/> PNC=Process No Color P__=Paint
6-1/8" to 7-1/8" OD Pole	AP-0105	-	Coating <input type="text"/> PNC=Process No Color P__=Paint
7-3/16" to 8-1/4" OD Pole	AP-0106	-	Coating <input type="text"/> PNC=Process No Color P__=Paint
8-3/16" to 9-3/16" OD Pole	AP-0107	-	Coating <input type="text"/> PNC=Process No Color P__=Paint
9-7/16" to 10-7/16" OD Pole	AP-0108	-	Coating <input type="text"/> PNC=Process No Color P__=Paint

Note: 1. All assemblies are supplied standard with stainless fasteners.
2. See Reference Section for available paint colors.

Pedestal Poles & Caps

Pelco offers pole and arm caps in various sizes. Caps for 4-1/2" OD posts are available in both aluminum and ABS plastic.



Pole & Arm Cap, Alum 10-11/16" to 11-11/16" OD Pole



AP-0109 - Coating
PNC=Process No Color
P__=Paint

Pole & Arm Cap, Alum 11-7/8" to 12-11/16" OD Pole

AP-0110 - Coating
PNC=Process No Color
P__=Paint

Post Top Cap, 4" (4-1/2" OD Pole), Alum for Extruded Sign Blade



SH-1608 - Coating
PNC=Process No Color
P__=Paint

Post Top Cap, 4" (4-1/2" OD Pole), Alum for Flat Sign Blade

SH-1615 - Coating
PNC=Process No Color
P__=Paint



AP-0805-PNC **Pole Cap, ABS Plastic
for up to 4" OD Pole**

AP-0806-PNC **Pole Cap, ABS Plastic
for up to 5" OD Pole**

Note: 1. All assemblies are supplied standard with stainless fasteners.
2. Specify options when ordering.
3. See Reference Section for available paint colors.

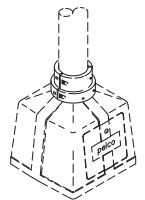
Pole & Base Accessories

Pole and base collar assemblies, for both square and octagonal bases, are available in highwind areas to add strength and help prevent loosening of connection.



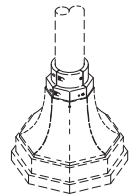
Pole & Base Collar Assembly, Alum Square Base

PB-5325 - Coating
 PNC=Process No Color
 P__=Paint



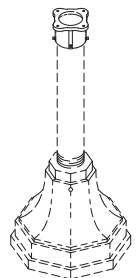
Pole & Base Collar Assembly, Alum Octagonal Base

PB-5326 - Coating
 PNC=Process No Color
 P__=Paint



Pedestal Adapter, 4" (4-1/2" OD Pole), Alum 6-1/2" Bolt Circle

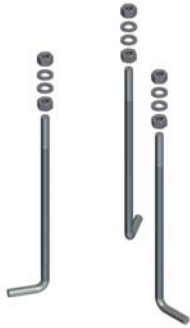
SE-3104 - Coating
 PNC=Process No Color
 P__=Paint



Note: 1. All assemblies are supplied standard with stainless steel fasteners.
 2. Specify options when ordering.
 3. See Reference Section for available paint colors.

Anchor Bolts

Anchor bolt cages allow the critical bolt circle dimensions to be maintained when the steel is cast into the concrete. These cages may be used instead of anchor bolt sets.



PB-5305-GLV **Anchor Bolt Set of 3 w/Hardware
3/4"-10NC, Galv**

Note:
Includes 3 Bolts, 6 Washers and 6 Nuts.

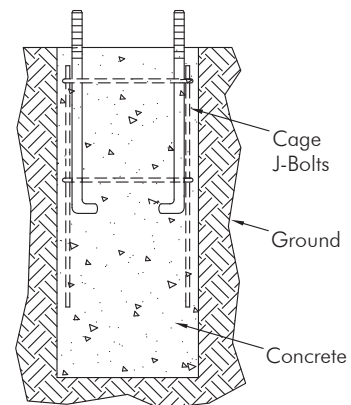


PB-5306-GLV **Anchor Bolt Set of 4 w/ Hardware
3/4"-10NC, Galv**

Note:
Includes 4 each: Bolts, Washers and Nuts.



AP-1095-GLV **Anchor Bolt Cage, w/ Hardware
3/4"-10 x 18", 36" Rebar
13" Bolt Circle, Galv**



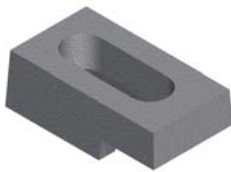
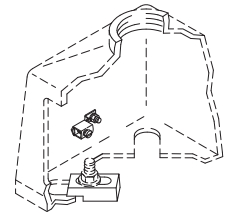
Typical Footing Detail

Pole & Base Accessories

Pelco offers various accessories for pedestal bases from grounding lugs to plastic hand hole covers.



PB-5323-PNC **Grounding Lug
w/ Mounting Hardware**



PB-0532 **Anchor Bolt Adapter, Alum**



PB-0602 **Shim, 1/16" x 2" x 2", Steel**

PB-0603 **Shim, 1/8" x 2" x 2", Steel**



PB-5356-PNC **Universal Hand Hole Cover, ABS Plastic
fits 2-3/4" x 4-1/2" to 5" x 8"**


Note: 1. All assemblies are supplied standard with stainless steel fasteners.
2. Specify options when ordering.

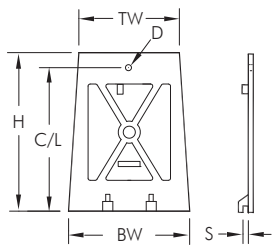
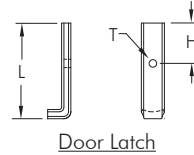
Plastic Replacement Doors

Plastic replacement doors for lighting pole bases are fabricated from tough hi-density UV inhibited plastic which offers excellent impact resistance. They give the appearance of aluminum, never needing painted and are a significant deterrent to vandalism since they have no scrap value. Pelco's doors withstand temperature extremes of -78° to +150° fahrenheit.

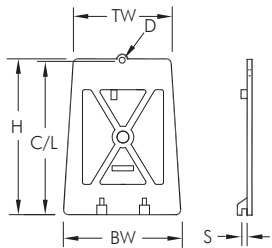


Transformer Door, Plastic

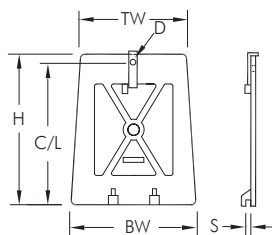
Base
Manufacturer
PB-0522 -  - PNC
*See Chart



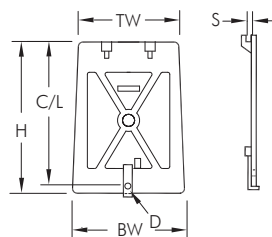
*BASE MFG	DESCRIPTION	S	C/L	H	DOOR SIZE		HOLE D	LATCH		
					TW	BW		L	H	T
03	Valmont, Flat	5/16"	12-5/8"	13-3/4"	7-15/16"	9-1/4"	3/8"	N/A	N/A	N/A
04	Union Metal, Flat	5/16"	13-5/16"	13-15/16"	7-59/64"	9-1/4"	3/8"	N/A	N/A	N/A



*BASE MFG	DESCRIPTION	S	C/L	H	DOOR SIZE		HOLE D	LATCH		
					TW	BW		L	H	T
05-06	Valmont-Akron, Flat (TB-1AF, TB-2AF, TB-3AF)	1/4"	13-1/2"	13-1/4"	9-1/8"	9-1/2"	3/8"	N/A	N/A	N/A
07	A.B. Chance, Flat	3/8"	13-5/16"	13-7/8"	9-1/16"	9-13/16"	3/8"	N/A	N/A	N/A
12	Hapco, Flat (56631, 56632)	5/16"	13-5/8"	13-7/16"	9-1/8"	9-5/8"	3/8"	N/A	N/A	N/A
19	P & K, C-98612, Flat (M-81)	3/8"	16-21/32"	16-1/2"	10-1/2"	13-1/2"	11/32"	N/A	N/A	N/A



*BASE MFG	DESCRIPTION	S	C/L	H	DOOR SIZE		HOLE D	LATCH		
					TW	BW		L	H	T
01	Kaiser, Curved w/ Latch	3/8"	13-3/4"	14-7/8"	10-5/8"	11-3/4"	11/32"	4-5/8"	1-3/4"	5/16"-18
08	P & K, Flat w/ Latch (TB2A, TB2C, TB5C)	1/4"	11-7/8"	13-1/4"	8-1/4"	9-15/16"	11/32"	3-1/4"	1-3/4"	5/16"-18
15	Akron, Flat w/ Latch (TB-20S)	1/4"	12"	13-3/8"	9-1/8"	9-5/8"	5/16"	3-3/8"	1-7/8"	1/4"- 20
16	Akron, Flat Short w/ Latch (TB-17S)	5/16"	11-1/8"	11-23/32"	9-1/8"	9-5/8"	5/16"	2-3/8"	1-1/8"	1/4"- 20
22	Akron, Curved w/ Latch (FP-5190)	3/8"	12"	13-5/16"	8-1/2"	9-1/2"	11/32"	3-1/4"	1-3/4"	5/16"-18



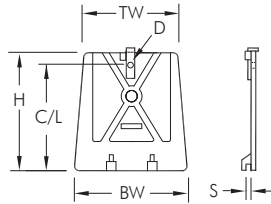
*BASE MFG	DESCRIPTION	S	C/L	H	DOOR SIZE		HOLE D	LATCH		
					W	BW		L	H	T
10	P & K, Flat w/ Latch (REVERSED OPENING TB-1, TB-2)	9/16"	12"	13-3/8"	8-3/8"	9-5/8"	11/32"	3-1/4"	1-3/4"	5/16"-18

Note:

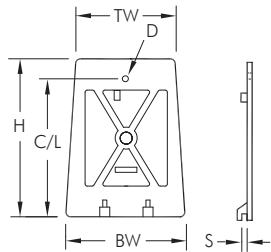
1. All assemblies are supplied standard with stainless fasteners.
2. Doors w/latches include latch & vandal-resistant screw. Doors without latches are shipped without hardware.
3. Specify options when ordering.

Plastic Replacement Doors

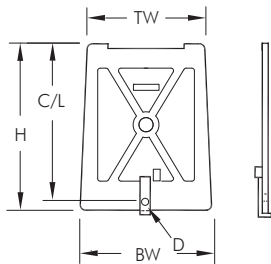
Plastic replacement doors for lighting pole bases are fabricated from tough hi-density UV inhibited plastic which offers excellent impact resistance. They give the appearance of aluminum, never needing painted and are a significant deterrent to vandalism since they have no scrap value. Pelco's doors withstand temperature extremes of -78° to +150° fahrenheit.



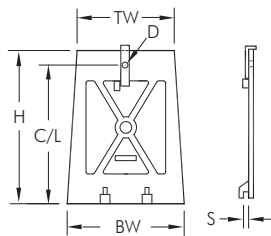
*BASE MFG	DESCRIPTION	S	C/L	H	DOOR SIZE		HOLE D	LATCH		
					W	BW		L	H	T
11	P & K, Flat Short w/ Latch (TB-4)	5/16"	9-13/16"	11-1/8"	9-9/16"	11-5/8"	11/32"	3-1/4"	1-3/4"	5/16"-18



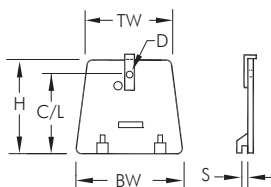
*BASE MFG	DESCRIPTION	S	C/L	H	DOOR SIZE		HOLE D	LATCH		
					TW	BW		L	H	T
13	Valmont, Flat	5/16"	12-15/16"	13-7/8"	7-15/16"	9-1/4"	3/8"	N/A	N/A	N/A
25	FAB, Flat	5/16"	12-7/8"	13-5/8"	8-1/2"	9-3/4"	5/16"	N/A	N/A	N/A



*BASE MFG	DESCRIPTION	S	C/L	H	DOOR SIZE		HOLE D	LATCH		
					W	BW		L	H	T
18	Akron, Flat, Hinged w/ Latch (REVERSE OPENING TB-17H)	N/A	10-3/16"	11-5/8"	9-1/8"	9-11/16"	5/16"	3-3/8"	1-7/8"	1/4"-20



*BASE MFG	DESCRIPTION	S	C/L	H	DOOR SIZE		HOLE D	LATCH		
					W	BW		L	H	T
24	Union Metal, Flat w/ Latch	5/16"	3-5/16"	13-3/4"	7-59/64"	9-1/4"	13/32"	3-3/8"	11/16"	3/8"-16



*BASE MFG	DESCRIPTION	S	C/L	H	DOOR SIZE		HOLE D	LATCH		
					W	BW		L	H	T
14	P & K, Curved, Small w/ Latch (HBS-6)	7/32"	4-1/2"	5-1/4"	5-3/16"	6"	9/32"	2-3/8"	1-1/8"	1/4"-20

Note:

1. All assemblies are supplied standard with stainless fasteners.
2. Doors w/latches include latch & vandal-resistant screw. Doors without latches are shipped without hardware.